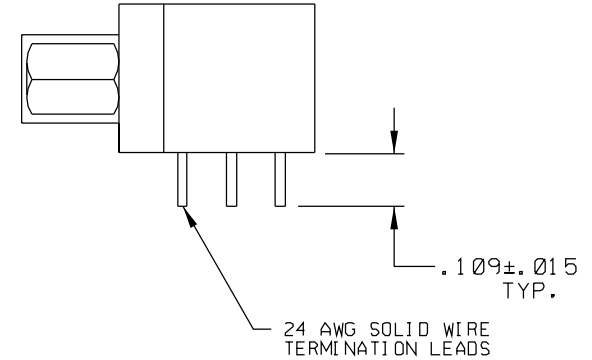
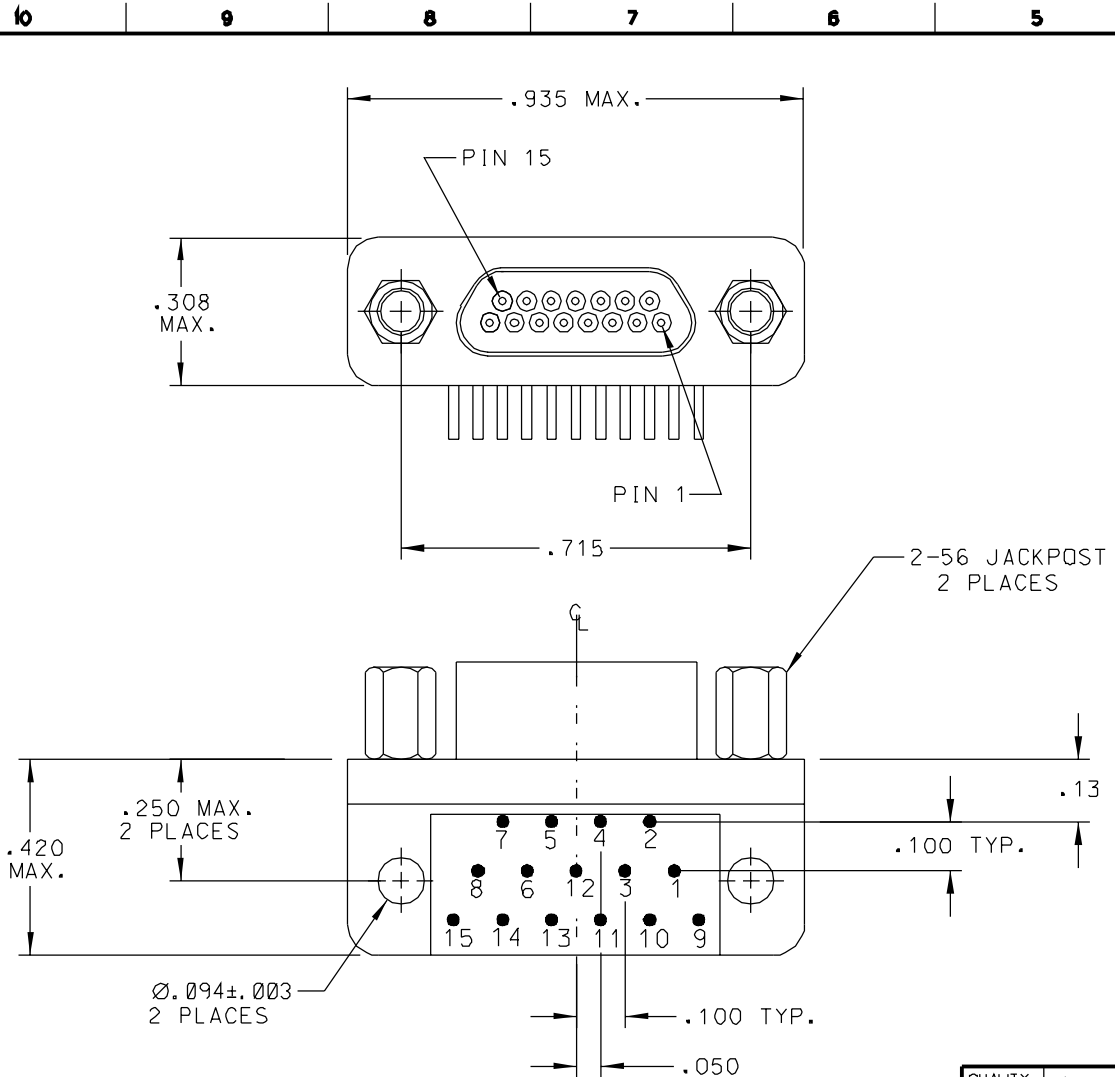


PART REV	DWG ISSUE	DATE	ECN NO.	APPVD BY	REL BY
-	-	8-6-07	UMI 3526		
A	A	8-6-07	UMI 3731		



3. NUMBERS SHOWN ON CONNECTOR ARE FOR REFERENCE ONLY AND DO NOT APPEAR ON CONNECTOR.
  2. MATERIALS: SHELL: 6061-T6 ALUMINUM, NICKEL PLATED  
INSULATOR AND BACKSHELL: PPS PER MIL-M-24519 GST-40F  
PIN CONTACTS: BERYLLIUM COPPER, GOLD PLATED  
HARDWARE: STAINLESS STEEL, PASSIVATED PER QQ-P-35  
TERMINATION LEADS: COPPER ALLOY, GOLD PLATED, SOLDER DIPPED
  1. MARKING: UMI, DATE CODE, UMI P/N 839040120.
- NOTES: UNLESS OTHERWISE SPECIFIED.

QUALITY SYMBOLS	UNLESS SPECIFIED: ALL DIMENSIONS IN INCHES	SCALE NONE	DWG SIZE B	THIRD ANGLE PROJECTION	REVISE ON CAD ONLY
MAJOR - 0	GENERAL TOLERANCES: 3 PLACE ± .005 2 PLACE ± .01 ANGULAR ± 2°	DRAWN BY & DATE DW 8-6-07	TITLE: CIRCUIT CONNECTOR, CM1R15P07-S01-HT-SPL-C4		
CRITICAL C = 0	Ulti-Mate CAGE CODE <b>58967</b>	CHECKED BY & DATE	MATERIAL: Ulti-Mate Connector Inc.		
SPC S = 0		APPROVED BY & DATE	CAD FILENAME SD-839040120.DGN	PART NO. 839040120	DRAWING NO. SD-839040120
			SHEET NO. 1 OF 1		REV A
THIS DRAWING CONTAINS INFORMATION THAT IS PROPRIETARY TO ULTI-MATE INCORPORATED AND SHOULD NOT BE USED WITHOUT WRITTEN PERMISSION.					