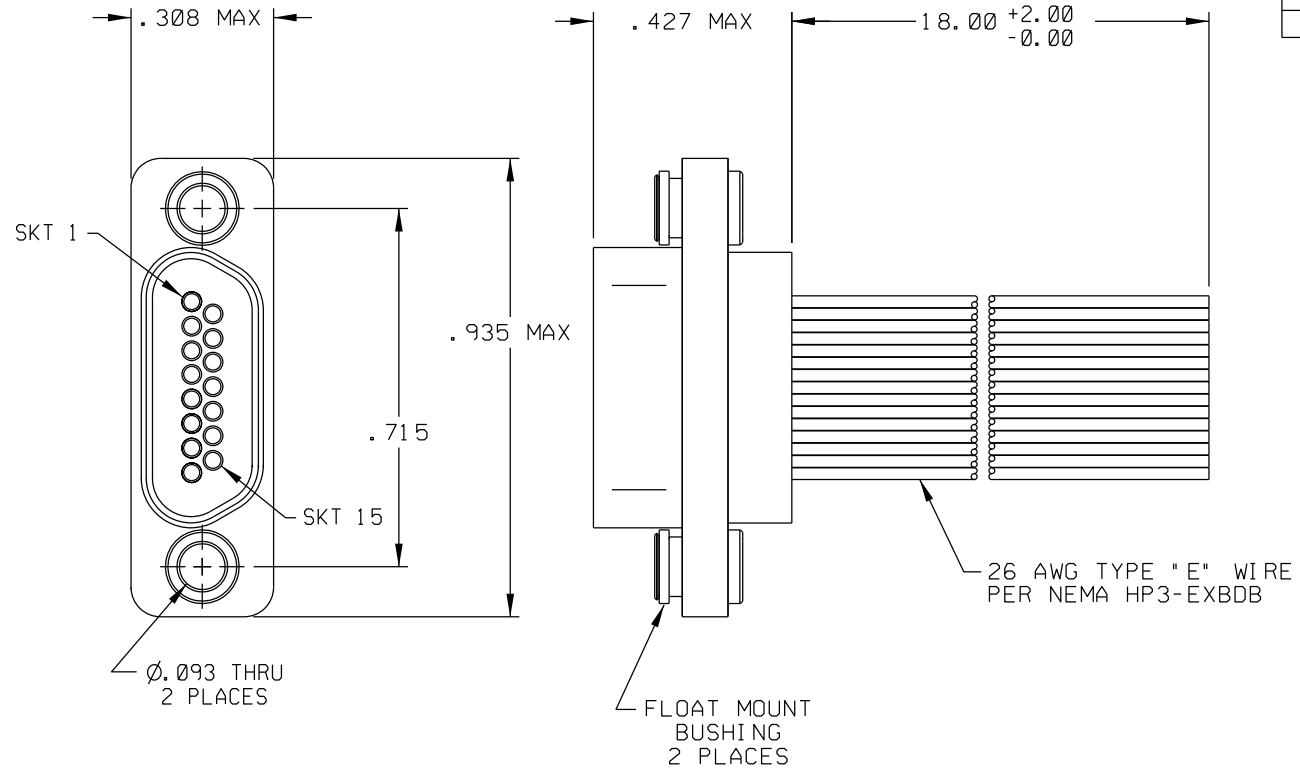


PART REV	DWG ISSUE	DATE	ECN NO.	APPVD BY	REL BY
-	A	9-25-13	UMI5110	DW	DW



1	BLK
2	BRN
3	RED
4	ORG
5	YEL
6	GRN
7	BLU
8	VIO
9	GRY
10	WHT
11	W/BLK
12	W/BRN
13	W/RED
14	W/ORG
15	W/YEL

3. PERFORMANCE SPECIFICATIONS:
 CURRENT RATING: 3 AMPS MAX.
 INSULATION RESISTANCE: 5000 MEGOHMS MIN.
 DWV: 600 VAC;
 TEMPERATURE RATING: 200°C
 CONTACT RESISTANCE: 8 MILLIOHMS MAX AT 2.5 AMPS

2. MATERIALS:
 SHELL: 6061-T6 ALUMINUM PER AMS-QQ-A200/8, NICKEL PLATED PER AMS 2404
 INSULATOR: PPS PER MIL-M-24519 GST-40F, COLOR: BLACK
 SOCKET CONTACTS: C21000 BRASS ALLOY PER ASTM B36, GOLD PLATED PER ASTM B488
 INTERFACIAL SEAL: FLUOROSILICONE PER MIL-R-25988
 FLOAT MOUNT HARDWARE: PASSIVATED 300 SERIES STAINLESS STEEL

1. MARKING: UMI, DATE CODE, UMI P/N.

NOTES: UNLESS OTHERWISE SPECIFIED.

QUALITY SYMBOLS CRITICAL MAJOR NO SYMBOL - MINOR DIMENSION	UNLESS SPECIFIED: ALL DIMENSIONS IN INCHES GENERAL TOLERANCES: 3 PLACE ±.005 2 PLACE ±.01 ANGULAR ±2°	SCALE: NONE DWG SIZE: B THIRD ANGLE PROJECTION	REVISE ON CAD ONLY		
	ALL EXTERNAL SPECIFICATIONS REFERENCED ON THIS DRAWING SHALL BE TO THE LATEST REVISION IN EFFECT	DRAWN BY & DATE: DW 10-13-05 CHECKED BY & DATE: SEE ECN APPROVED BY & DATE: SEE ECN	TITLE: CONNECTOR ASSEMBLY, MR15S0-26E5-18.0-S01-F01-HT		
	Uti-Mate CAGE CODE 58967	CAD FILENAME: SD-839040085.DGN	MATERIAL: 2 Uti-Mate Connector Inc.	PART NO.: 839040085 DRAWING NO.: SD-839040085	SHEET NO.: 1 OF 1 PART REV: -
	THIS DRAWING CONTAINS INFORMATION THAT IS PROPRIETARY TO ULTI-MATE INCORPORATED AND SHOULD NOT BE USED WITHOUT WRITTEN PERMISSION.				