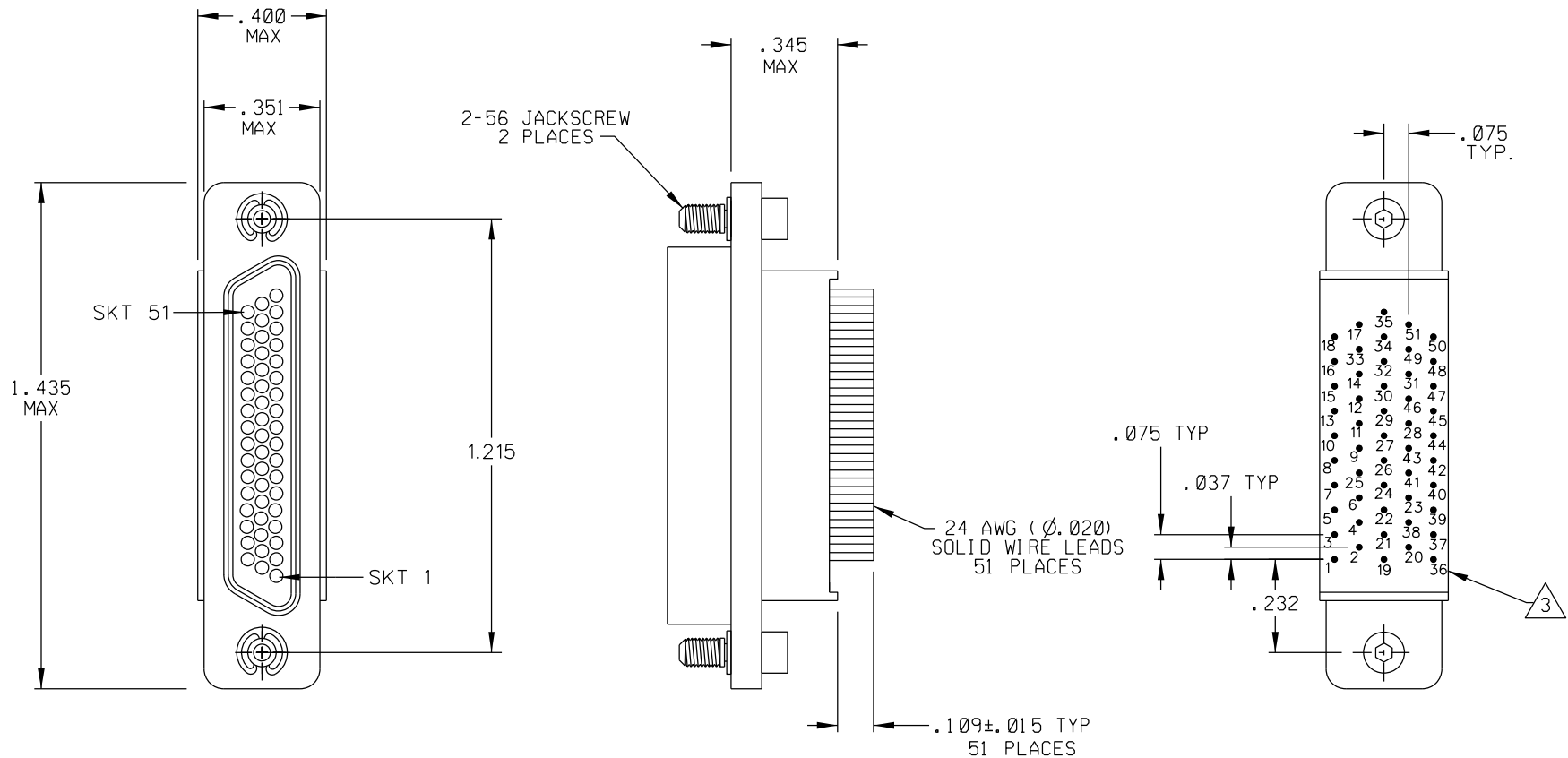


SD-836270712

PART REV	DWG ISSUE	DATE	ECN NO.	APPVD BY	REL BY
-	-	2-9-15	UMI 5528	TP	DW



3 NUMBERS ON BACKSHELL ARE SHOWN FOR REFERENCE ONLY AND DO NOT APPEAR ON PART

2 MATERIALS:  
 SHELL: 6061-T6 ALUMINUM PER QQ-A200/8, CADMIUM PLATED PER AMS-QQ-P-416  
 INSULATOR AND BACKSHELL: PPS PER MIL-M-24519 GST-40F  
 SOCKET CONTACTS: C21000 COPPER ALLOY PER ASTM B36  
 GOLD PLATED PER ASTM B488  
 24 AWG SOLID WIRE LEADS: TIN PLATED COPPER ALLOY PER A-A 59551 TYPE S  
 HARDWARE: PASSIVATED STAINLESS STEEL IAW MIL-DTL-83513/5  
 INTERFACIAL SEAL: FLUROSILICONE

1. MARKING: UMI, DATE CODE, UMI P/N.  
 NOTES: UNLESS OTHERWISE SPECIFIED.

QUALITY SYMBOLS CRITICAL SPECIAL KEY	UNLESS SPECIFIED: ALL DIMENSIONS IN INCHES GENERAL TOLERANCES: 3 PLACE ±.005 2 PLACE ±.01 ANGULAR ±2°	SCALE 3 : 1	DWG SIZE B	THIRD ANGLE PROJECTION	REVISE ON CAD ONLY	
	ALL EXTERNAL SPECIFICATIONS REFERENCED ON THIS DRAWING SHALL BE TO THE LATEST REVISION IN EFFECT Ulti-Mate CAGE CODE <b>58967</b>	DRAWN BY & DATE DW 7-8-13 CHECKED BY & DATE SEE ECN APPROVED BY & DATE SEE ECN	TITLE: CIRCUIT CONNECTOR, CM16R51-3S02		MATERIAL: 2	Ulti-Mate Connector Inc.
	CAD FILENAME SD-836270712.DGN	PART NO. 836270712	DRAWING NO. SD-836270712	SHEET NO. 1 OF 1	THIS DRAWING CONTAINS INFORMATION THAT IS PROPRIETARY TO ULTI-MATE INCORPORATED AND SHOULD NOT BE USED WITHOUT WRITTEN PERMISSION.	
	UMI-Mate CAGE CODE <b>58967</b>	PART REV -				