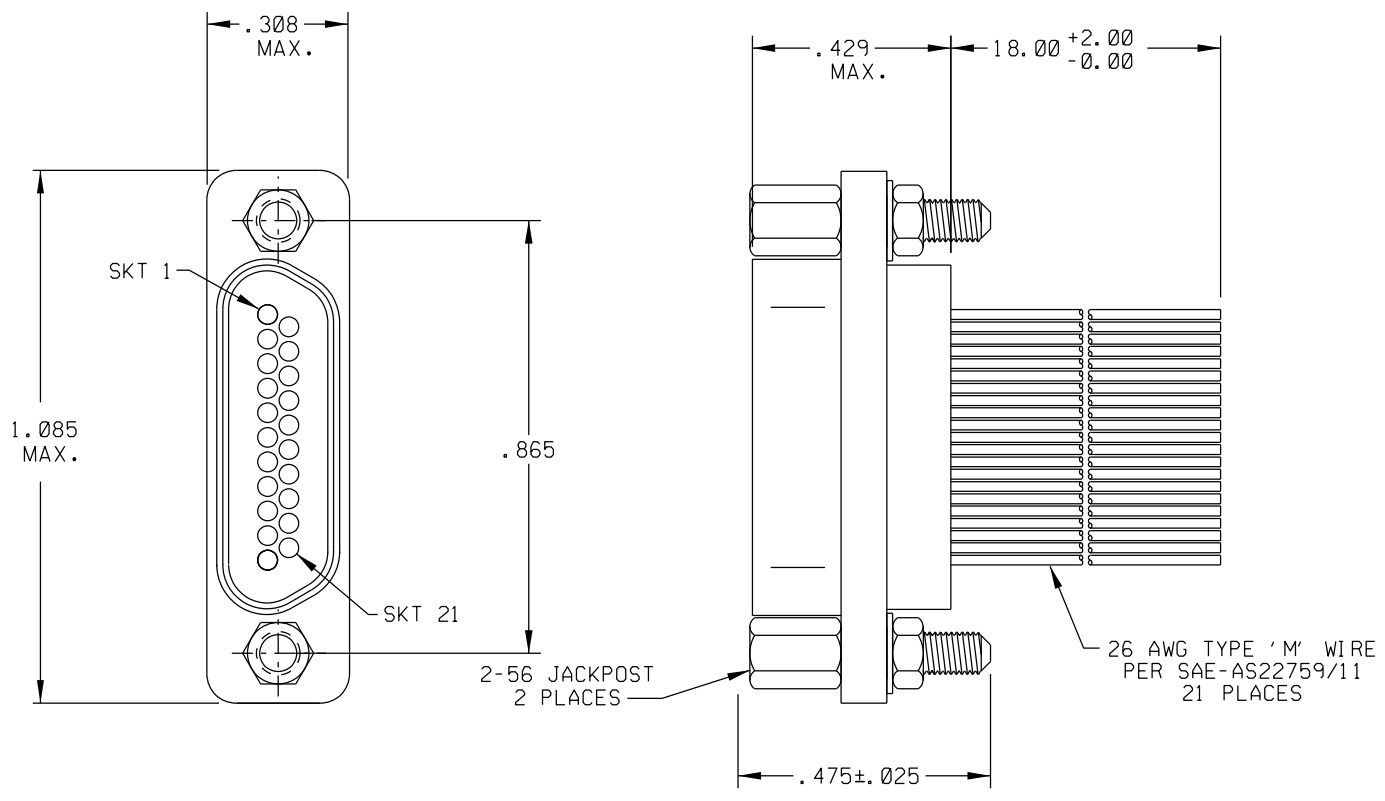


PART REV	DWG ISSUE	DATE	ECN NO.	APPVD BY	REL BY
-	-	8-19-08	UMI 4488	DW	DW



- 1 — BLK
- 2 — BRN
- 3 — RED
- 4 — ORG
- 5 — YEL
- 6 — GRN
- 7 — BLU
- 8 — VIO
- 9 — GRY
- 10 — WHT
- 11 — W/BLK
- 12 — W/BRN
- 13 — W/RED
- 14 — W/ORG
- 15 — W/YEL
- 16 — W/GRN
- 17 — W/BLU
- 18 — W/VIO
- 19 — W/GRY
- 20 — W/BLK/BRN
- 21 — W/BLK/RED

2 MATERIALS:
 SHELL: CADMIUM PLATED 6061-T6 ALUMINUM
 INSULATOR: PPS PER MIL-M-24519 GST-40F
 SOCKET CONTACTS: GOLD PLATED COPPER ALLOY
 HARDWARE: STAINLESS STEEL, PASSIVATED PER QQ-P-35
 INTERFACIAL SEAL: FLUOROSILICONE
 1. MARKING: UMI, DATE CODE, UMI P/N.

NOTES: UNLESS OTHERWISE SPECIFIED.

QUALITY SYMBOLS MAJOR $\nabla = 0$ CRITICAL $\nabla C = 0$ SPC $\nabla S = 0$	UNLESS SPECIFIED: ALL DIMENSIONS IN INCHES GENERAL TOLERANCES: 3 PLACE ± .005 2 PLACE ± .01 ANGULAR ± 2°	SCALE 4 : 1 DWG SIZE B THIRDS ANGLE PROJECTION	REVISE ON CAD ONLY TITLE: MICRO-D RECEPTACLE (SOCKETS), SIZE 21, WIRED, MR21 S07-26M5-18.0
	Uti-Mate CAGE CODE 58967	DRAWN BY & DATE DW 9-21-08 CHECKED BY & DATE SEE ECN APPROVED BY & DATE SEE ECN	MATERIAL:
		CAD FILENAME SD-834230187.DGN PART NO. 834230187	DRAWING NO. SD-834230187 SHEET NO. 1 OF 1
		THIS DRAWING CONTAINS INFORMATION THAT IS PROPRIETARY TO ULTI-MATE INCORPORATED AND SHOULD NOT BE USED WITHOUT WRITTEN PERMISSION.	