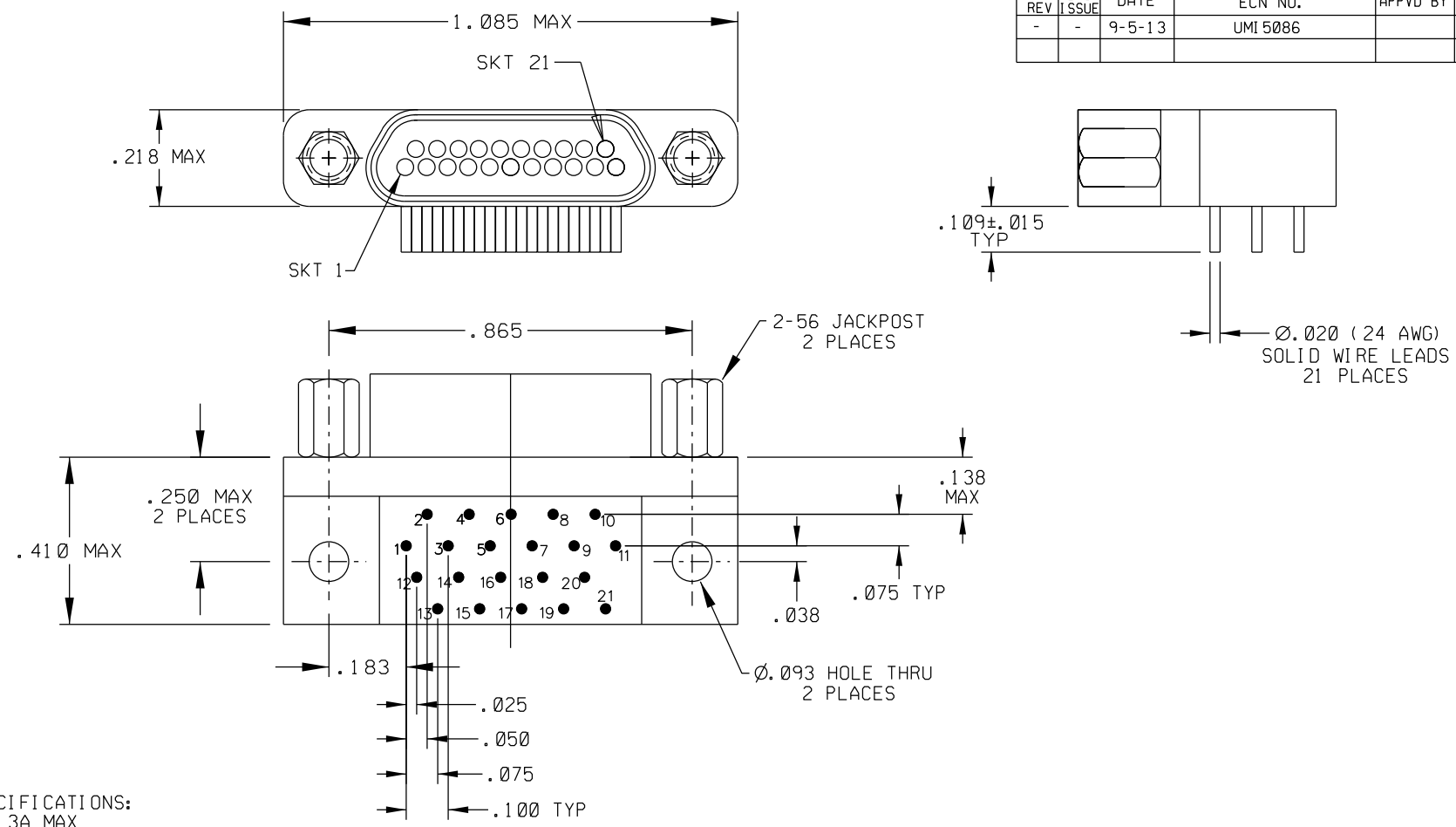


PART REV	DWG ISSUE	DATE	ECN NO.	APPVD BY	REL BY
-	-	9-5-13	UMI 5086		



- PERFORMANCE SPECIFICATIONS:
CURRENT RATING: 3A MAX
INSULATION RESISTANCE: 5000 MEGOHMS MIN.
DWV: 600 VAC
TEMPERATURE RATING: 200°C
CONTACT RESISTANCE: 8 MILLIOHMS MAX AT 2.5 AMPS
- NUMBERS ON BACKSHELL ARE SHOWN FOR REFERENCE ONLY AND DO NOT APPEAR ON PART
- MATERIALS:
SHELL: CADMIUM PLATED 6061-T6 ALUMINUM
INSULATOR AND BACKSHELL: PPS PER MIL-M-24519 GST-40F
SOCKET CONTACTS: GOLD PLATED COPPER ALLOY
24 AWG LEADS: TIN PLATED COPPER ALLOY
- MARKING: UMI, DATE CODE, UMI P/N.

NOTES: UNLESS OTHERWISE SPECIFIED.

QUALITY SYMBOLS CRITICAL MAJOR NO SYMBOL - MINOR DIMENSION	UNLESS SPECIFIED: ALL DIMENSIONS IN INCHES	SCALE: NONE	DWG SIZE: B	THIRD ANGLE PROJECTION	REVISE ON CAD ONLY
	GENERAL TOLERANCES: 3 PLACE ± .005 2 PLACE ± .01 ANGULAR ± 2°	DRAWN BY & DATE DW 9-3-13	TITLE: SIZE 21 CIRCUIT RECEPTACLE, LOW PROFILE METAL SHELL, CA8R21 S07-S01-HT		
	Uti-Mate CAGE CODE 58967	CHECKED BY & DATE SEE ECN	MATERIAL: Uti-Mate Connector Inc.		
		APPROVED BY & DATE SEE ECN	CAD FILENAME SD-436431817.DGN	PART NO. 436431817	DRAWING NO. SD-436431817
THIS DRAWING CONTAINS INFORMATION THAT IS PROPRIETARY TO ULTI-MATE INCORPORATED AND SHOULD NOT BE USED WITHOUT WRITTEN PERMISSION.					PART REV -