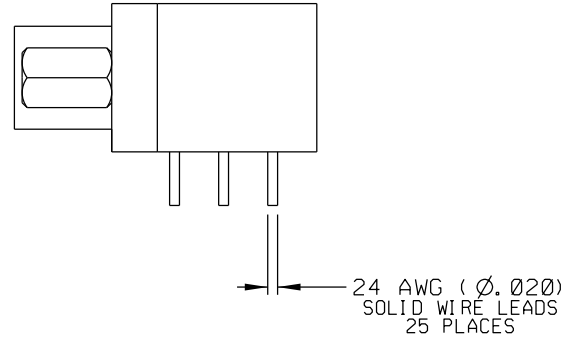
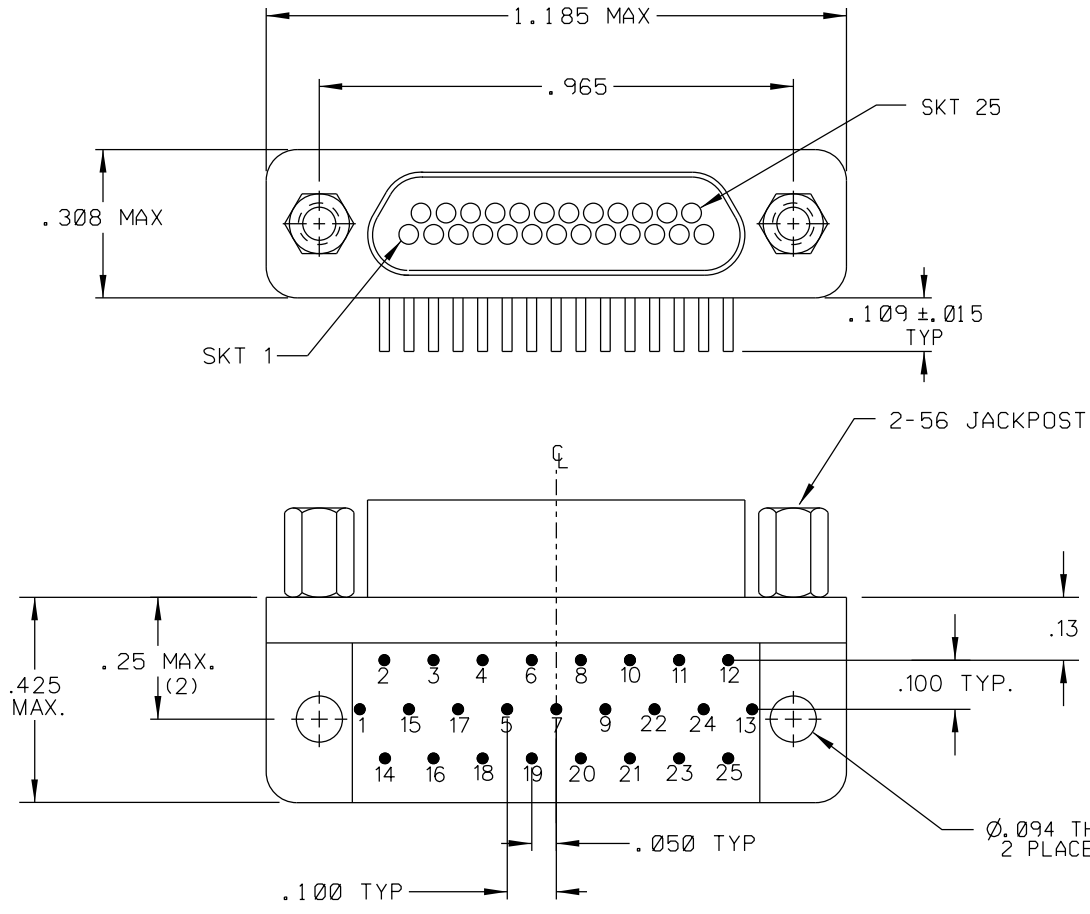


PART REV	DWG ISSUE	DATE	ECN NO.	APPVD BY	REL BY
-	-	3-10-10	UMI 4063	DW	DW
-	A	1-9-23	UMI 8234	DW	DW



2 MATERIALS:
 SHELL: 6061-T6 ALUMINUM PER AMS-QQ-A200/8 NICKEL PLATED PER AMS-C-26074
 INSULATOR AND BACKSHELL: PPS PER MIL-M-24519 GST-40F
 SOCKET CONTACTS: COPPER ALLOY CDA 210 1/2 HARD
 GOLD PLATED PER ASTM B488
 24 AWG SOLID WIRE LEADS: GOLD PLATED COPPER ALLOY
 HARDWARE: STAINLESS STEEL, PASSIVATED PER SAE-AMS-QQ-P-35
 INTERFACIAL SEAL: FLOUROSILICONE

1. MARKING: "UMI", UMI DATE CODE, AND UMI PART NUMBER.

NOTES: UNLESS OTHERWISE SPECIFIED

QUALITY SYMBOLS	UNLESS SPECIFIED: ALL DIMENSIONS IN INCHES	SCALE NONE	DWG SIZE B	THIRD ANGLE PROJECTION	REVISE ON CAD ONLY
CRITICAL	GENERAL TOLERANCES: 3 PLACE ±.005 2 PLACE ±.01 ANGULAR ±2°	DRAWN BY & DATE DW 2-26-10	CHECKED BY & DATE SEE ECN	TITLE: CIRCUIT CONNECTOR, FEMALE, SIZE 25, STYLE 1 BACKSHELL, HI-TEMP, CMI R25S07-24C4-S01-HT	
SPECIAL	ALL EXTERNAL SPECIFICATIONS REFERENCED ON THIS DRAWING SHALL BE TO THE LATEST REVISION IN EFFECT	APPROVED BY & DATE SEE ECN	CAD FILENAME SD-839040131.DGN	MATERIAL: 2	Uti-Mate Connector Inc.
KEY	Uti-Mate CAGE CODE 58967	PART NO. 839040131	DRAWING NO. SD-839040131	SHEET NO. 1 OF 1	PART REV -
	THIS DRAWING CONTAINS INFORMATION THAT IS PROPRIETARY TO ULTI-MATE INCORPORATED AND SHOULD NOT BE USED WITHOUT WRITTEN PERMISSION.				