

PART REV	DWG ISSUE	DATE	ECN NO.	APPVD BY	REL BY
-	-	2/1/13	UMI 4859	DW	DW

F

E

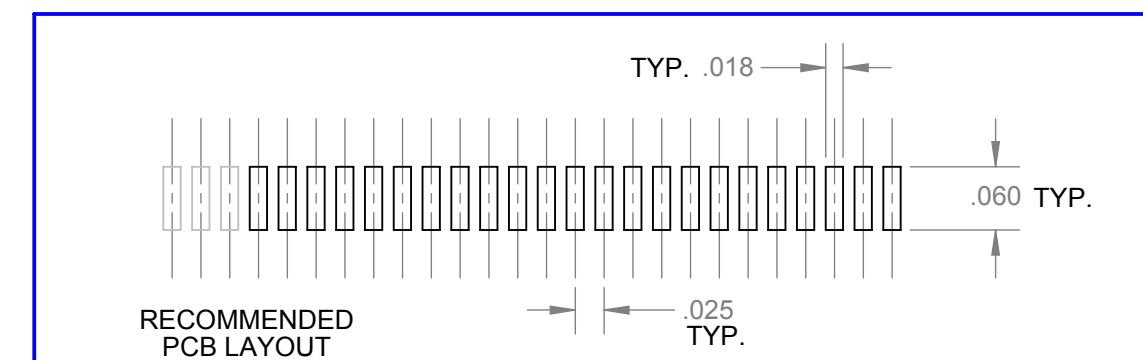
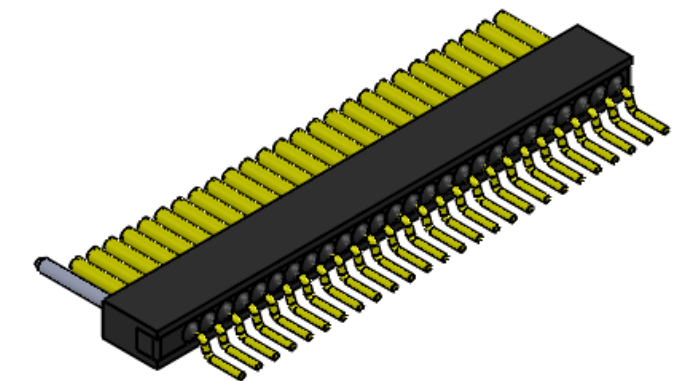
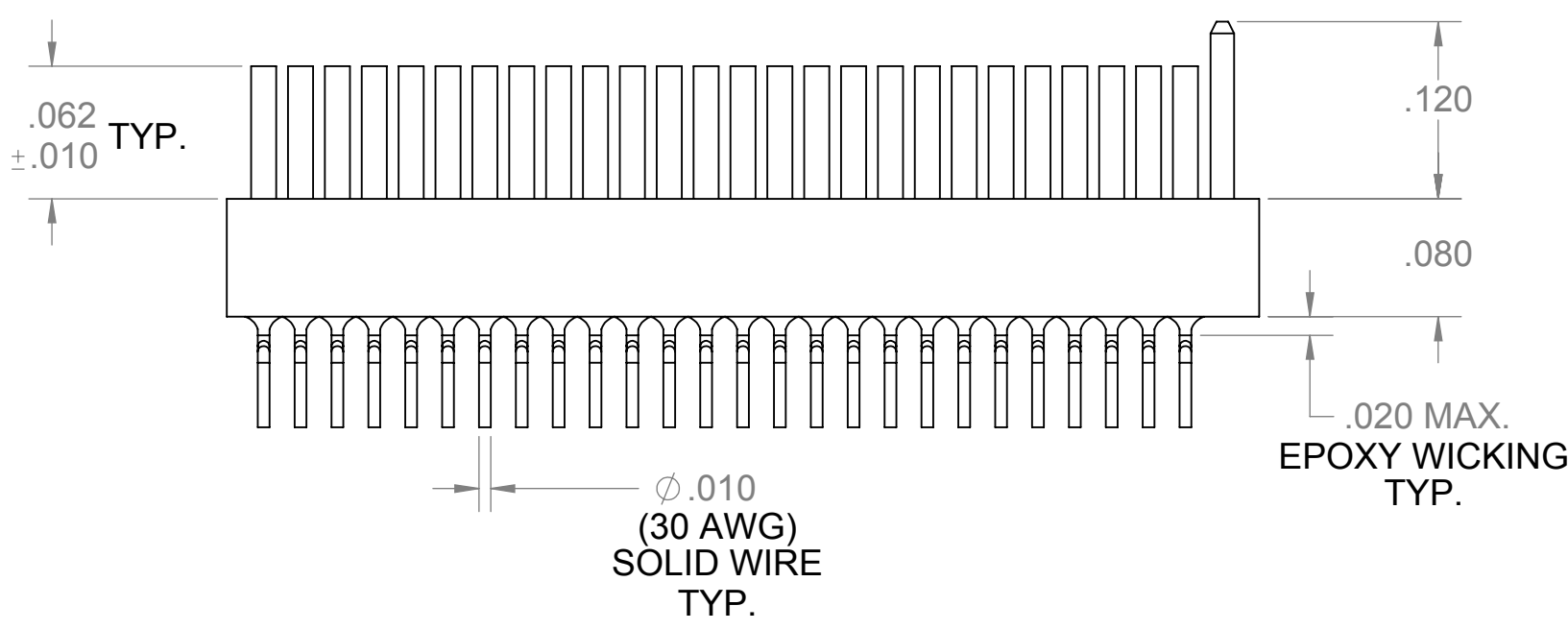
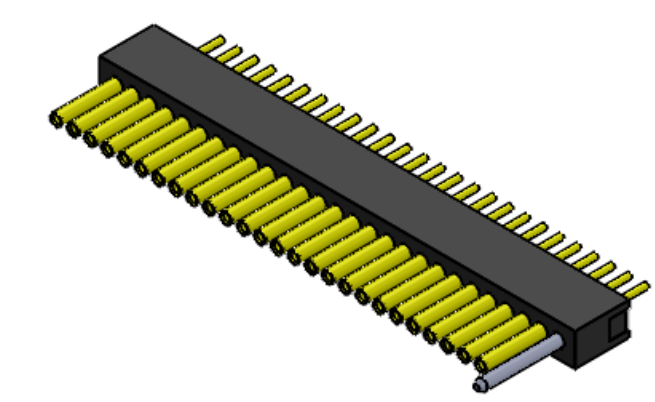
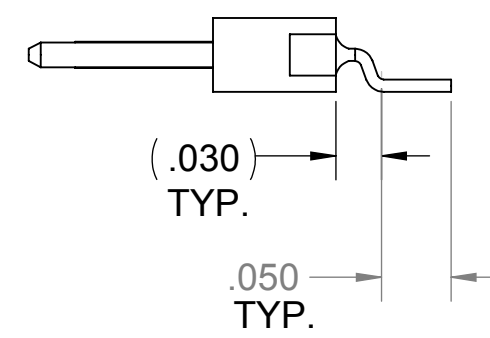
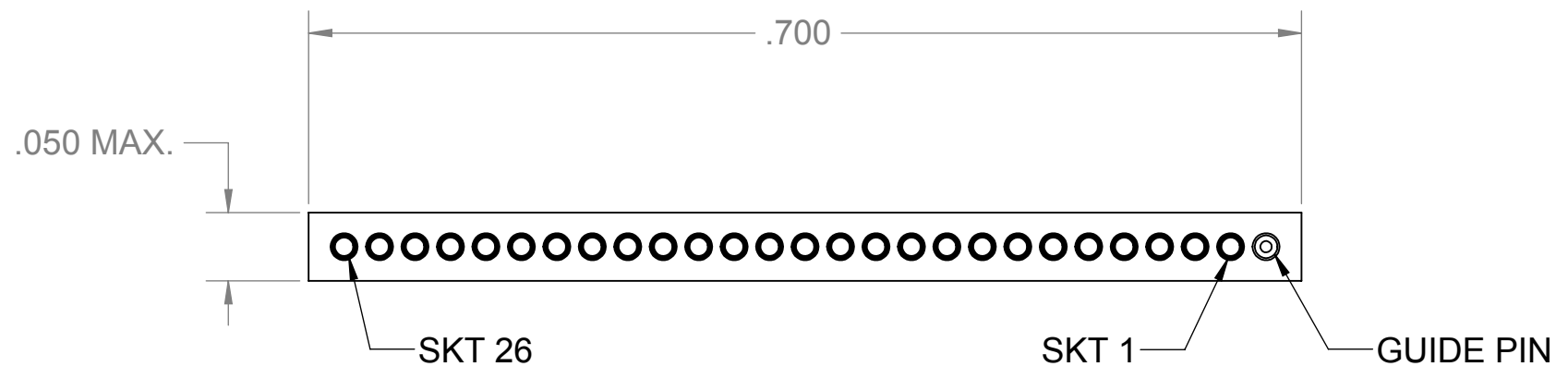
D

C

B

A

10 9 8 7 6 5 4 3 2



3. PERFORMANCE SPECIFICATIONS:  
 CURRENT RATING: 1 AMPS MAX.  
 INSULATION RESISTANCE: 5000 MEGAHOMS @ 100 VDC  
 DWV: 250 VAC  
 TEMPERATURE RATING: 125° C  
 CONTACT RESISTANCE: 87 MILLIOHMS MAX. @ 1A

- 2 MATERIALS:  
 STRIP INSULATOR: PPS PER MIL-M-24519 GST-40F, COLOR: BLACK  
 SOCKET CONTACTS: C73500 COPPER ALLOY PER ASTM B122, GOLD PLATED PER ASTM B488  
 30 AWG LEADS: TIN PLATED COPPER ALLOY PER A-A-59551, TYPE S  
 GUIDE PIN: PASSIVATED 300 SERIES STAINLESS STEEL

1. MARKING: "UMI", DATE CODE, UMI PART NUMBER, (AS SPACE PERMITS).

NOTES: UNLESS OTHERWISE SPECIFIED.

QUALITY SYMBOLS MAJOR CRITICAL NO SYMBOL = MINOR DIMENSION	UNLESS OTHERWISE SPECIFIED: ALL DIMENSIONS ARE IN INCHES	SCALE: 8:1	DWG SIZE: B	THIRD ANGLE PROJECTION	REVISE ON CAD ONLY
	GENERAL TOLERANCES: 3 PLACES ±.005 2 PLACES ±.01 ANGULAR ±2°	DRAWN BY & DATE: DU 2/1/13		TITLE: NANO STRIP CONNECTOR, NSR26S01-L05	
		CHECKED BY & DATE: DW 6/12/13		MATERIAL: 2	
		APPROVED BY & DATE: DW 6/12/13			
	ULTI-MATE CAGE CODE: 58967	CAD FILE NAME: SD-837266021.SLDDRW	PART NO.: 837266021	DRAWING NO.: SD-837266021	SHEET NO.: 1 of 1

THIS DRAWING CONTAINS INFORMATION THAT IS PROPRIETARY TO ULTI-MATE INCORPORATED AND SHOULD NOT BE USED WITHOUT WRITTEN PERMISSION.