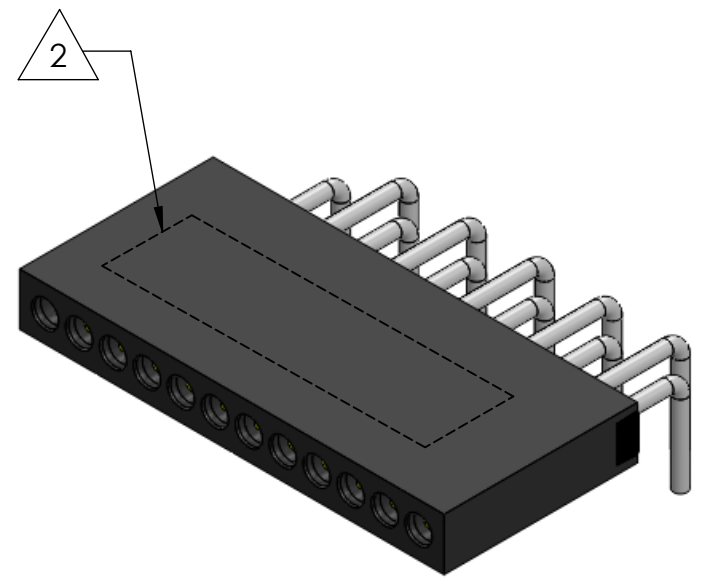
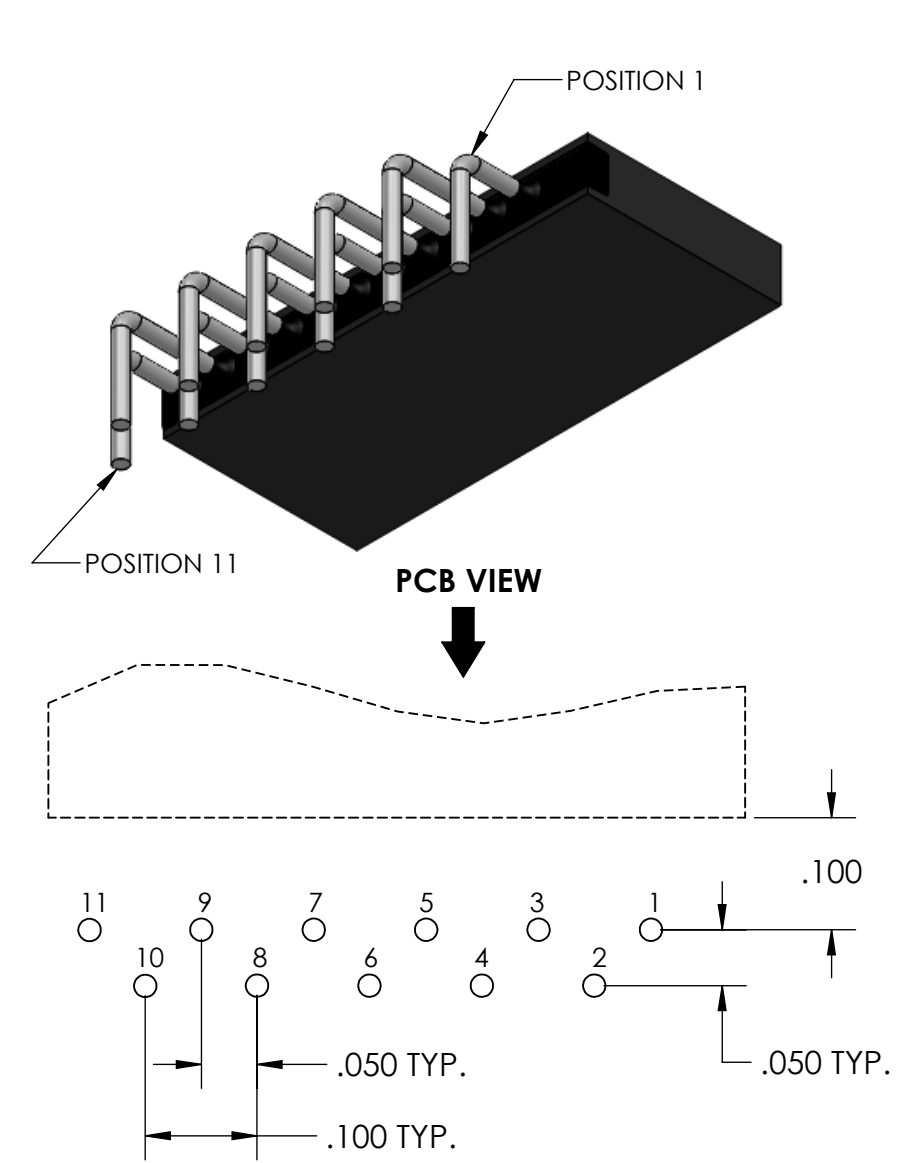
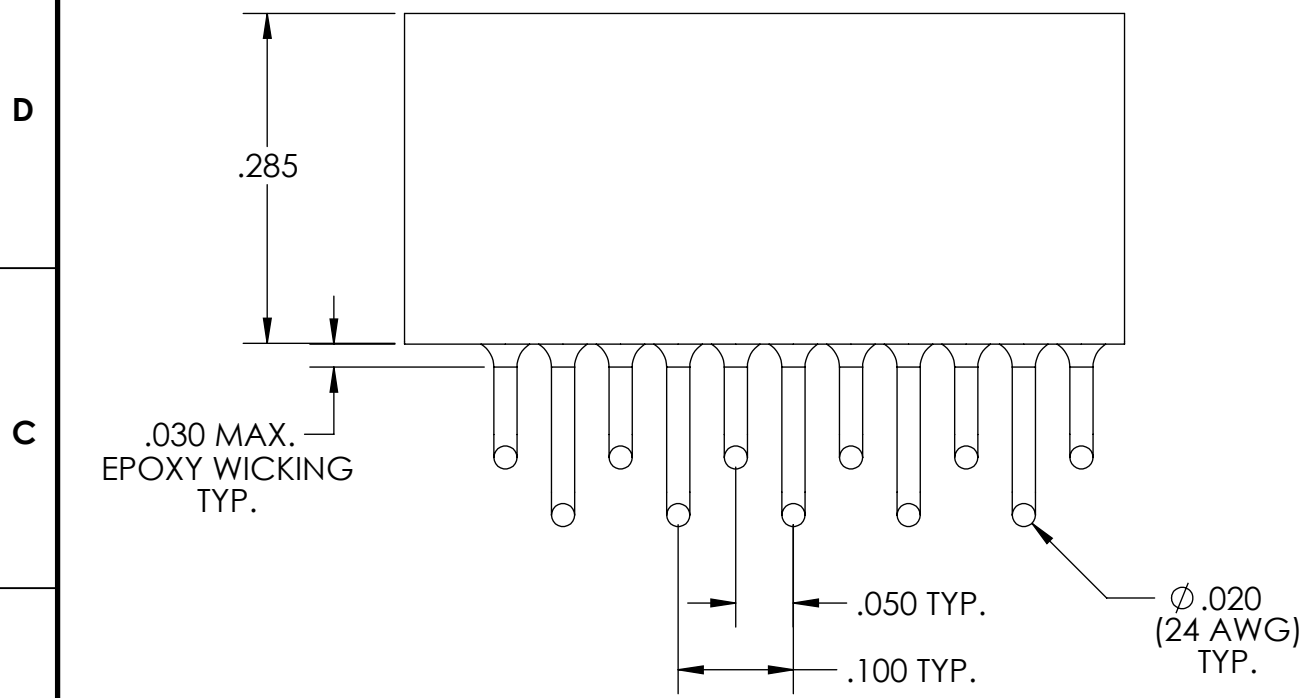
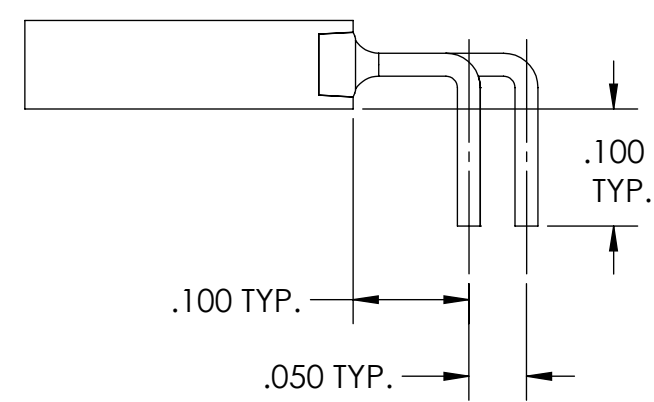
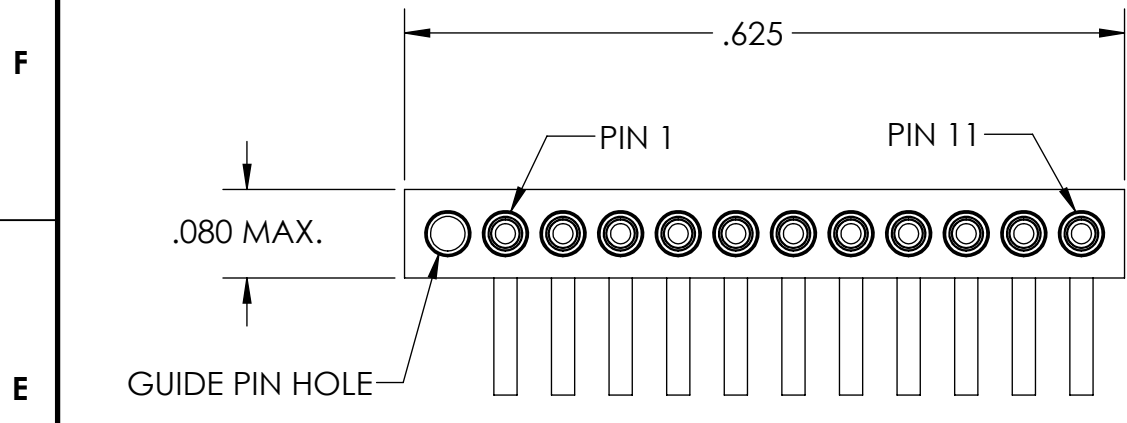


PART REV	DWG ISSUE	DATE	ECN NO.	APPVD BY	REL BY
-	-	10/24/13	UMI5137	DW	DW



4. PERFORMANCE SPECIFICATIONS:
 CURRENT RATING: 3 AMPS MAX.
 DWV: 600 VAC
 TEMPERATURE RATING: 125° C

3 MATERIALS:
 INSULATOR: PPS PER MIL-M-24519 GST-40F, COLOR: BLACK
 PIN CONTACTS: C17200 BERYLLIUM COPPER PER ASTM B194,
 GOLD PLATED PER ASTM B488
 24 AWG LEADS: TIN PLATED COPPER ALLOY PER A-A-59551, TYPE S

2 MARKING: "UMI", DATE CODE, UMI PART NUMBER, (AS SPACE PERMITS).

1. CONNECTOR ASSEMBLY IS IAW MIL-DTL-83513 WHERE APPLICABLE.

NOTES: UNLESS OTHERWISE SPECIFIED.

RECOMMENDED PCB LAYOUT

QUALITY SYMBOLS CRITICAL C MAJOR NO SYMBOLS = MINOR DIMENSIONS	UNLESS OTHERWISE SPECIFIED: ALL DIMENSIONS ARE IN INCHES	SCALE 6:1	DWG SIZE B	THIRD ANGLE PROJECTION	REVISE ON CAD ONLY		
	GENERAL TOLERANCES: 3 PLACES ±.005 2 PLACES ±.01 ANGULAR ±2°	DRAWN BY & DATE DU 10/18/13	TITLE: MICRO STRIP CONNECTOR, 11 PIN, 1 GUIDE PIN HOLE, L01 LEADS, SR11P1-L01		MATERIAL: 3	ENG PROJECT #: E128	
	ULTI-MATE CAGE CODE 58967	CHECKED BY & DATE DW 10/18/13	PART NO. 837111901		DRAWING NO. SD-837111901	SHEET NO. 1 of 1	
	CAD FILE NAME SD-837111901.DGN	APPROVED BY & DATE DW 10/18/13	THIS DRAWING CONTAINS INFORMATION THAT IS PROPRIETARY TO ULTI-MATE INCORPORATED AND SHOULD NOT BE USED WITHOUT WRITTEN PERMISSION.		PART REV. -		
	CAD FILE NAME SD-837111901.DGN	PART NO. 837111901	DRAWING NO. SD-837111901		SHEET NO. 1 of 1		