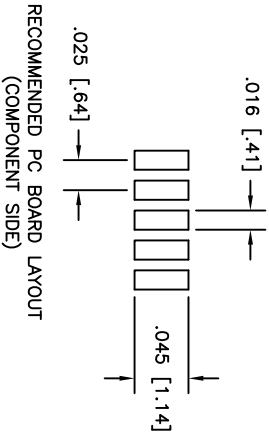
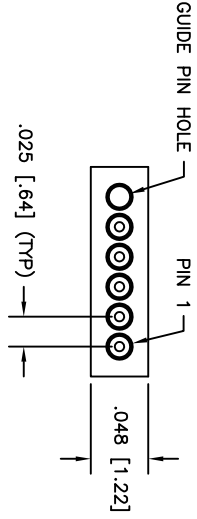
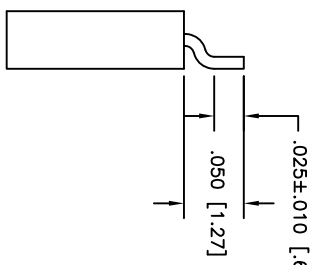
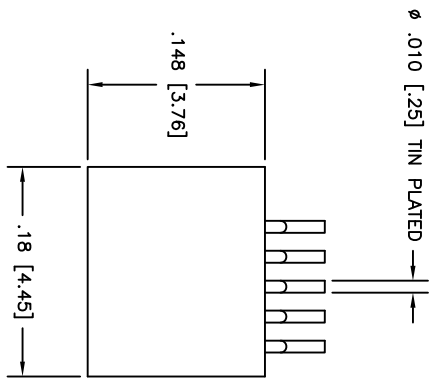


PART DWG	DATE	ECN NO.	APP'D BY	REL BY
REV	ISSUE			
-	02-22-18	UM1671	T-POWBAAT	PER



3. PERFORMANCE: CONTACT RATING: 1 AMPERE MAXIMUM
 INSULATION RESISTANCE: 5000 MEGOHMS MINIMUM @ 100 VDC
 CONTACT RESISTANCE: 0.021 VOLT MAXIMUM DROP @ 1.0 AMPS (.021 OHMS)

2. MATERIALS: INSULATOR: PPS (POLYPHENYLENE SULFIDE) GST-40F
 CONTACTS: BERYLLIUM COPPER PER ASTM B194, GOLD PLATED PER ASTM B488
 LEADS: TIN PLATED

1. MARKINGS: UMI, DATE CODE, W/O AND UMI P/N ON BAG OR TAG

NOTES: UNLESS OTHERWISE SPECIFIED

QUALITY SYMBOLS	UNLESS SPECIFIED, ALL DIMENSIONS IN INCHES	SCALE	DWG SIZE	THIRD ANGLE PROJECTION	REVISE ON CAD ONLY
MAJOR =	GENERAL TOLERANCES:	10:1	B		
CRITICAL =	3 PLACE ±.005	DRAWN BY & DATE			
	2 PLACE ±.010	PER 01-19-18			
	ANGULAR ±2°	CHECKED BY & DATE			
		SEE ECN			
		APPROVED BY & DATE			
		SEE ECN			
SPC	Uti+Mate CAGE CODE	CAD FILENAME	PART NO.	DRAWING NO.	CONNECTOR INC.
S =	58967	SD-837055021.DWG	837055021	SD-837055021	SHEET NO.
		THIS DRAWING CONTAINS INFORMATION THAT IS PROPRIETARY TO UTI-MATE			1 OF 1
		INCORPORATED AND SHOULD NOT BE USED WITHOUT WRITTEN PERMISSION.			PART REV