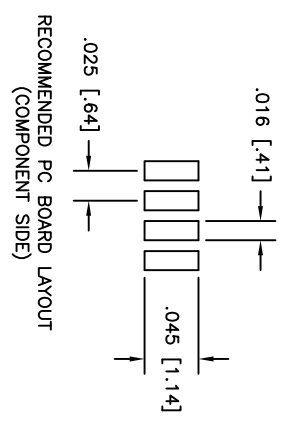
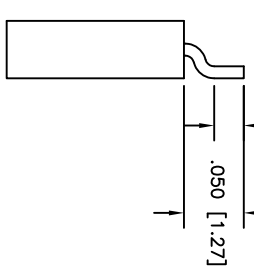
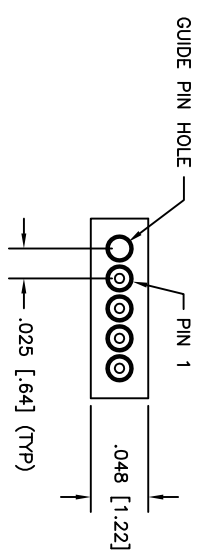
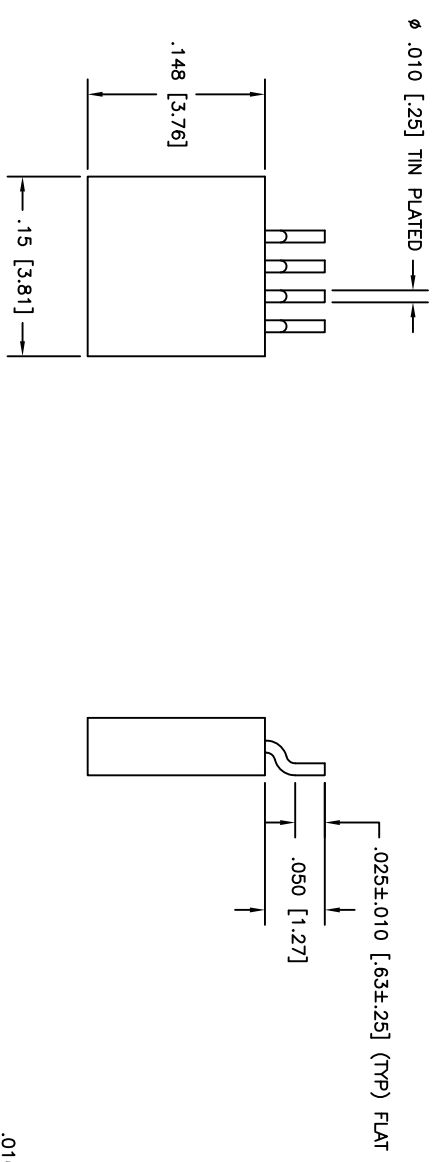


PART DWG	DATE	ECN NO.	APPD BY	REL BY
REV	ISSUE			
-	12-01-17	UM6573	T-POMBART	PER



- 3. PERFORMANCE: CONTACT RATING: 1 AMPERE MAXIMUM  
INSULATION RESISTANCE: 5000 MEGOHMS MINIMUM @ 100 VDC  
CONTACT RESISTANCE: 0.021 VOLT MAXIMUM DROP @ 1.0 AMPS (.021 OHMS)
  - 2. MATERIALS: INSULATOR: PPS (POLYPHENYLENE SULFIDE) GST-40F  
CONTACTS: BERYLLIUM COPPER PER ASTM B194, GOLD PLATED PER ASTM B488  
LEADS: TIN PLATED
  - 1. MARKINGS: UMI, DATE CODE, W/O AND UMI P/N ON BAG OR TAG
- NOTES: UNLESS OTHERWISE SPECIFIED

QUALITY SYMBOLS	UNLESS SPECIFIED, ALL DIMENSIONS IN INCHES	SCALE	DWG SIZE	THIRD ANGLE PROJECTION	REVISE ON CAD ONLY
MAJOR =	GENERAL TOLERANCES:	10:1	B		
CRITICAL =	3 PLACE $\pm .005$	DRAWN BY & DATE			
	2 PLACE $\pm .010$	PER 09-17-14			
	ANGULAR $\pm 2^\circ$	CHECKED BY & DATE			
		SEE ECN			
		APPROVED BY & DATE			
		SEE ECN			
SPC	UT+-MATE CASE CODE	CAD FILENAME	PART NO.	DRAWING NO.	CONNECTOR INC.
S	58967	SD-837045021.DWG	837045021	SD-837045021	SHEET NO.
=		THIS DRAWING CONTAINS INFORMATION THAT IS PROPRIETARY TO UTI-MATE			1 OF 1
		INCORPORATED AND SHOULD NOT BE USED WITHOUT WRITTEN PERMISSION			PART REV
					-