

10

9

8

7

6

5

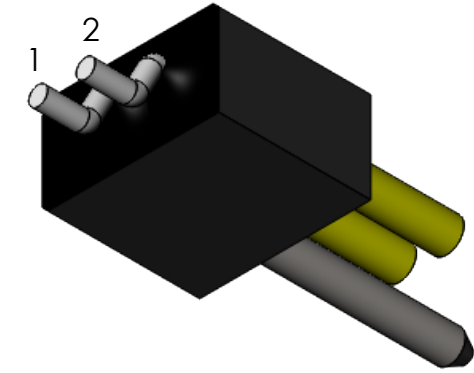
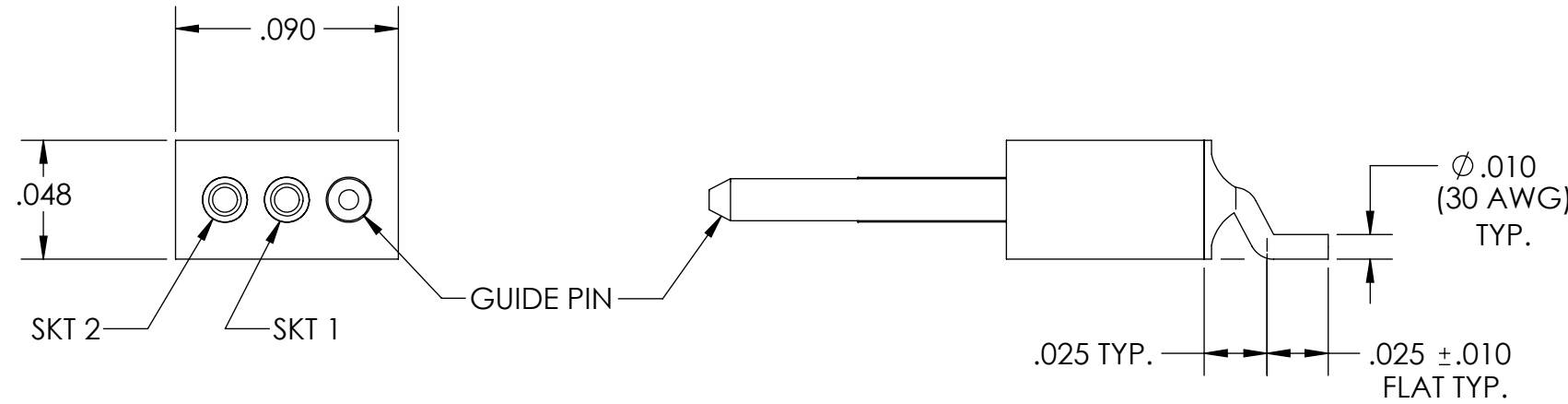
4

3

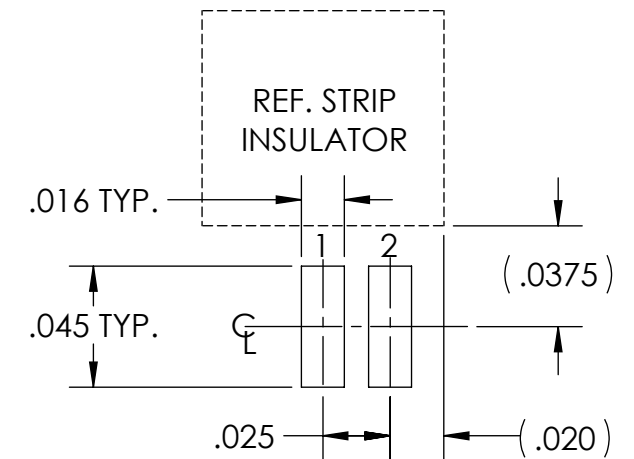
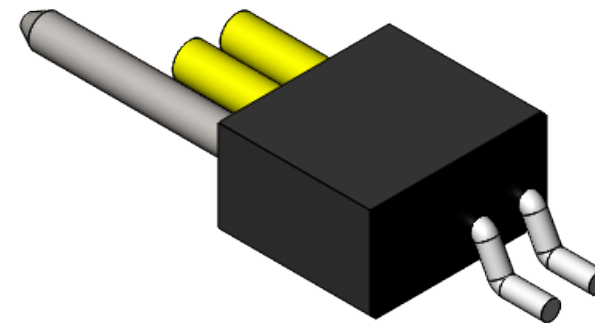
2

SD-837026120

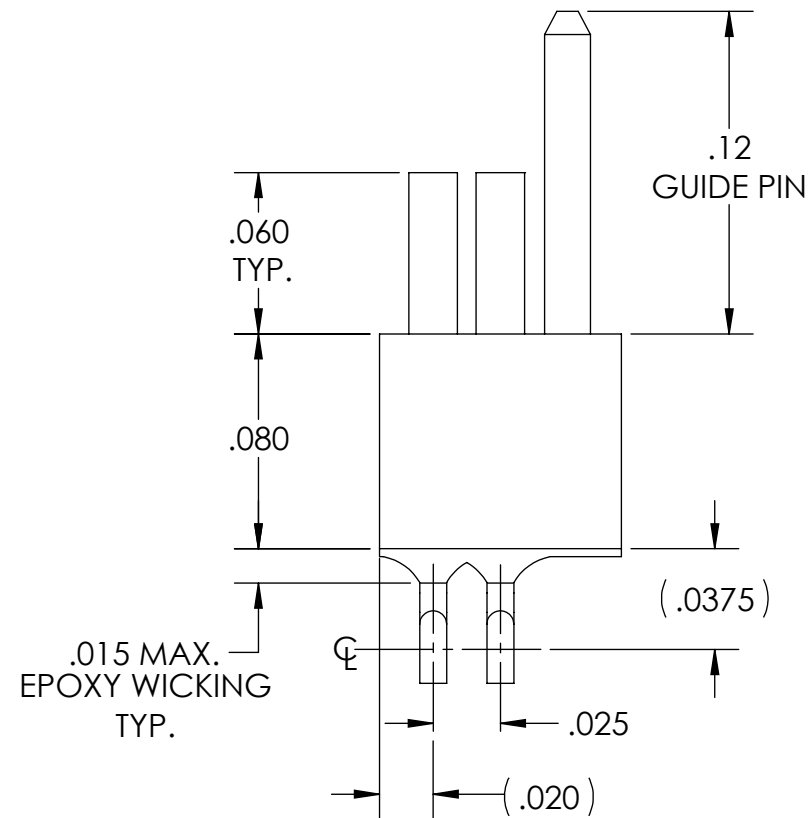
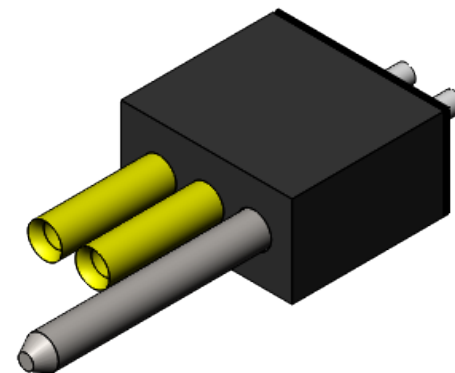
PART REV	DWG ISSUE	DATE	ECN NO.	APPVD BY	REL BY
-	-	1/19/19	UMI7007	DU	DW



↓
PCB VIEW



RECOMMENDED PCB LAYOUT



4. CONTACT HEIGHTS ARE TO BE PER QA-STD-101.

3. PERFORMANCE SPECIFICATIONS:
CURRENT RATING: 1 AMP MAX.
DWV: 250 VAC
TEMPERATURE RATING: -55°C TO 125°C

2 MATERIALS:
INSULATOR: PPS PER MIL-M-24519 GST-40F, COLOR: BLACK
SOCKET CONTACTS: C21000 BRASS ALLOY PER ASTM B36, GOLD PLATED PER ASTM-B488
LEADS: 30 AWG TIN PLATED COPPER ALLOY PER A-A-59551, TYPE S
GUIDE PIN: 300 SERIES STAINLESS STEEL, PASSIVATED

1. MARKING: BAG AND TAG WITH "UMI", DATE CODE, UMI PART NUMBER, UMI WORK ORDER NUMBER

NOTES: UNLESS OTHERWISE SPECIFIED.

QUALITY SYMBOLS	UNLESS OTHERWISE SPECIFIED; ALL DIMENSIONS ARE IN INCHES	SCALE 14:1	DWG SIZE B	THIRD ANGLE PROJECTION	REVISE ON CAD ONLY
CRITICAL C	GENERAL TOLERANCES: 3 PLACES ±.005 2 PLACES ±.01 ANGULAR ±2°	DRAWN BY & DATE DU 1/19/19	TITLE: NANO STRIP CONNECTOR, NSR-02S1-L05		
MAJOR ▲	ULTI-MATE CAGE CODE 58967	CHECKED BY & DATE DW 1/19/19	MATERIAL: 2	ENG PROJECT #: NONE	
NO SYMBOLS = MINOR DIMENSIONS		APPROVED BY & DATE DW 1/19/19	PART NO. 837026120	DRAWING NO. SD-837026120	
		CAD FILE NAME SD-837026120.SLDDRW	PART NO. 837026120	DRAWING NO. SD-837026120	SHEET NO. 1 of 1
THIS DRAWING CONTAINS INFORMATION THAT IS PROPRIETARY TO ULTI-MATE INCORPORATED AND SHOULD NOT BE USED WITHOUT WRITTEN PERMISSION.					PART REV. -