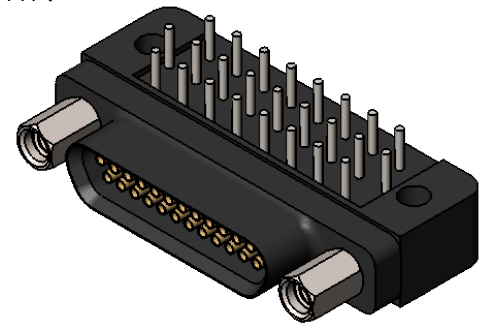
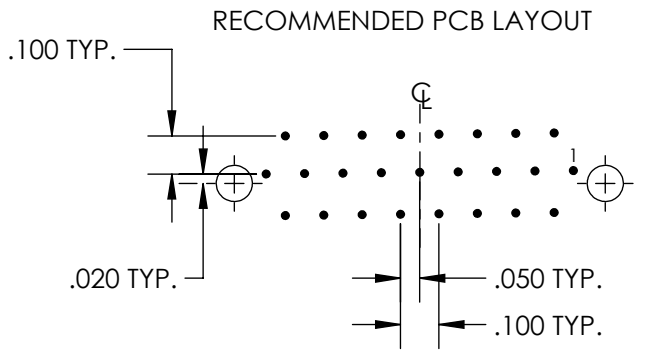
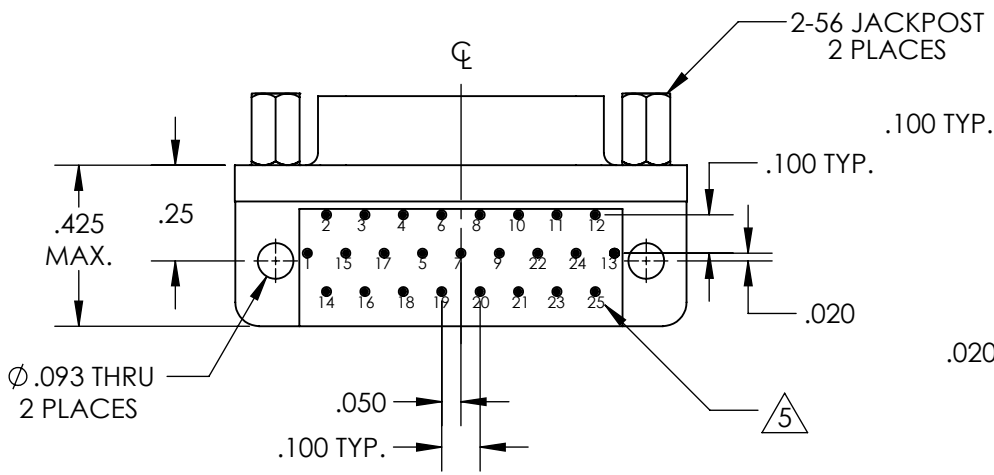
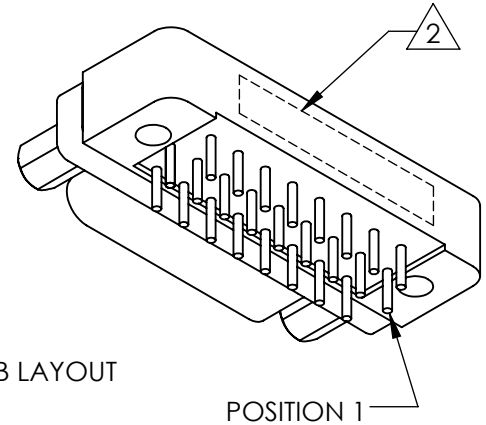
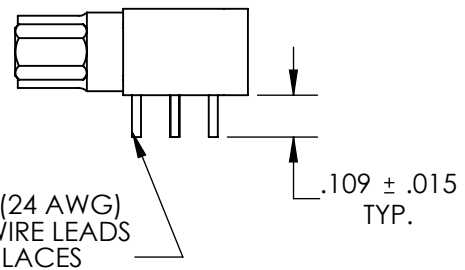
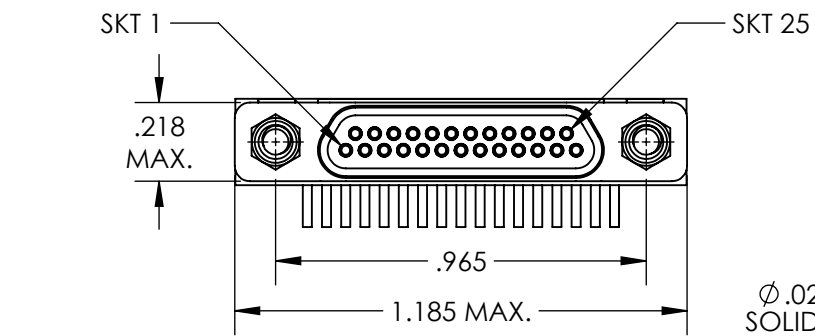


REVISIONS					
PART REV	DWG ISSUE	DATE	ECN NO.	APPVD. BY	REL. BY
-	A	10/18/2013	UMI5138	DW	DW
A	B	10/18/2013	UMI5784	DW	DW
A	C	3/21/2018	UMI6534	DW	DW

F
E
D
C
B
A



5 NUMBERS ARE SHOWN FOR REFERENCE ONLY AND DO NOT APPEAR ON PART

4. PERFORMANCE SPECIFICATIONS:
 CURRENT RATING: 3A MAX
 INSULATION RESISTANCE: 5000 MΩ MIN.
 DWV: 600 VAC
 TEMPERATURE RATING: 125°C

3 MATERIALS:
 BODY AND BACKSHELL: PPS PER MIL-M-24519 GST-40, COLOR: BLK
 SOCKET CONTACT: C21000 BRASS ALLOY PER ASTM B36, GOLD PLATED PER ASTM B488
 24 AWG LEADS: TIN PLATED COPPER ALLOY PER A-A-59551 TYPE S
 HARDWARE: PASSIVATED STAINLESS STEEL IAW MIL-DTL-83513/5

2 MARKING: "UMI", UMI PART NUMBER, DATE CODE, UMI WORK ORDER NUMBER
 1. CONNECTOR ASSEMBLY IS IAW MIL-DTL-83513 UNLESS OTHERWISE SPECIFIED
 NOTES: UNLESS OTHERWISE SPECIFIED

QUALITY SYMBOLS MAJOR CRITICAL SPC	UNLESS SPECIFIED: ALL DIMENSIONS IN INCHES	SCALE: 2:1	DWG SIZE: A	THIRD ANGLE PROJECTION	REVISE ON CAD ONLY	
	GENERAL TOLERANCES: 3 PLACE ±.005 2 PLACE ±.01 ANGULAR ±2°	DRAWN BY & DATE JB 9/19/2012	TITLE: MICRO-D CONNECTOR, RECEPTACLE, STYLE 1, SIZE 25, ALL PLASTIC		CP1R25S07	
	UMI-Mate CAGE CODE 58967	CHECKED BY & DATE DW 9/19/2012	MATERIAL		Ulti-Mate	
		CAD FILENAME SD-836648117.slddrw	PART NO. 836648117	DRAWING NO. SD-836648117	SHEET NO. 1 OF 1	
THIS DRAWING CONTAINS INFORMATION THAT IS PROPRIETARY TO ULTI-MATE INCORPORATED AND SHOULD NOT BE USED WITHOUT WRITTEN PERMISSION.				PART REV. A		