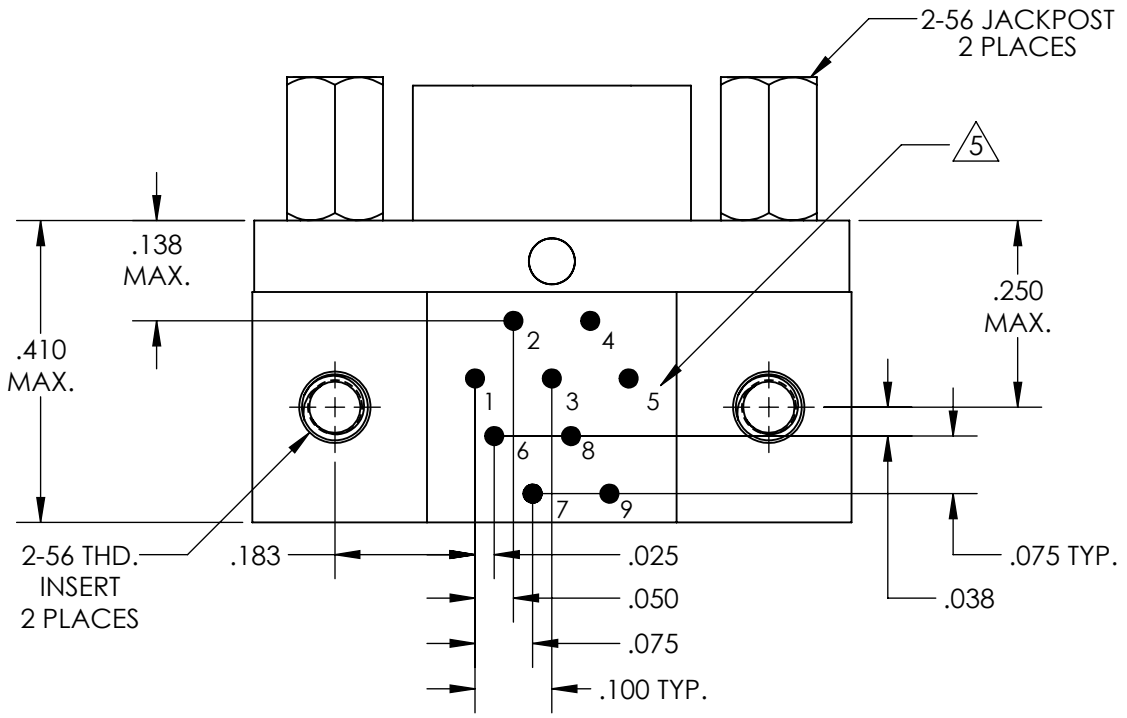
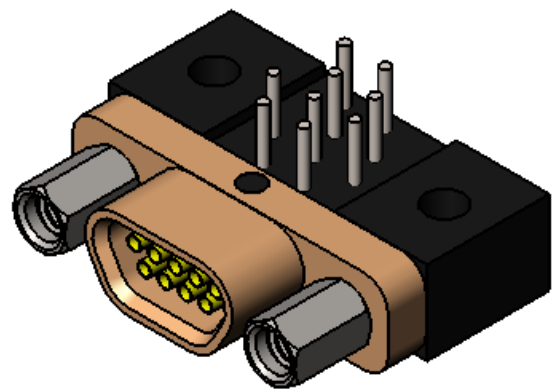
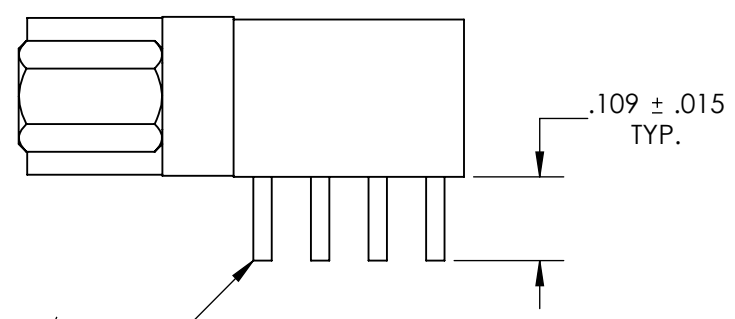
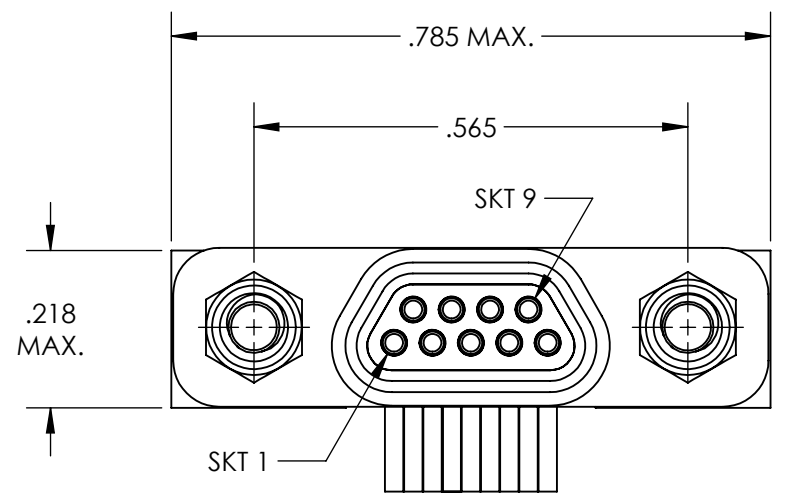


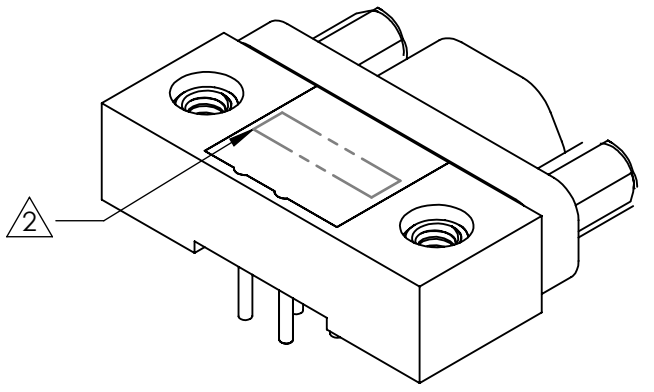
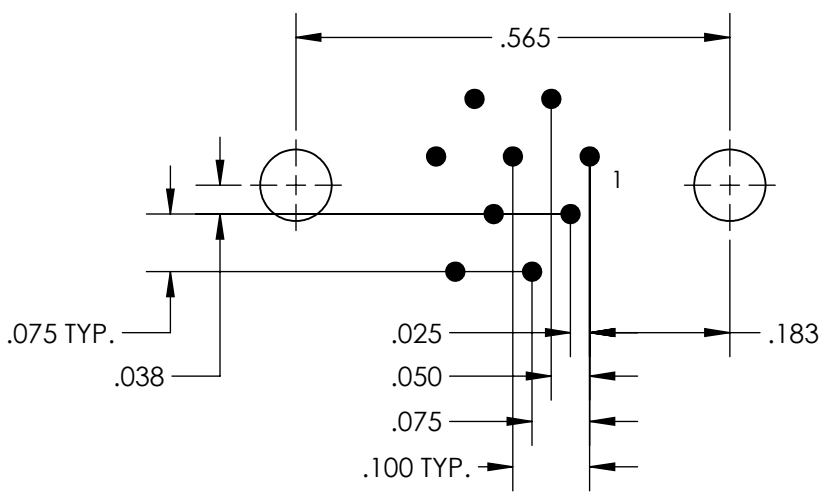
REVISIONS

| PART REV. | DWG. ISSUE | DATE       | ECN NO. | APPVD. BY | REL. BY |
|-----------|------------|------------|---------|-----------|---------|
| -         | -          | 11/05/2013 | UMI5147 | DW        | DW      |



24 AWG (Ø .020)  
SOLID WIRE LEADS  
9 PLACES

RECOMMENDED PCB LAYOUT



5 NUMBERS ARE FOR REFERENCE ONLY AND DO NOT APPEAR ON PART

4. PERFORMANCE SPECIFICATIONS:  
CURRENT RATING: 3A MAX.  
INSULATION RESISTANCE: 5000 MΩ MIN.  
DWV: 600 VAC  
TEMPERATURE RATING: 125°C

3 MATERIALS:  
SHELL: 6061-T6 ALUMINUM PER AMS-QQ-A200/8, CADMIUM PLATED PER AMS-QQ-P-416  
INSULATOR AND BACKSHELL: PPS PER MIL-M-24519 GST-40F, COLOR: BLK  
PIN CONTACTS: C17200 BERYLLIUM COPPER PER ASTM B194, GOLD PLATED PER ASTM B488  
24 AWG LEADS: TIN PLATED COPPER ALLOY PER A-A-59551 TYPE S  
HARDWARE: PASSIVATED STAINLESS STEEL IAW MIL-DTL-83513/5

2 MARKINGS: UMI, UMI PART NO., AND DATE CODE  
1. CONNECTOR ASSEMBLY IS IAW MIL-DTL-83513 UNLESS OTHERWISE SPECIFIED

**NOTES: UNLESS OTHERWISE SPECIFIED**

|   |  |  |   |  |
|---|--|--|---|--|
| QUALITY SYMBOLS<br>CRITICAL<br>MAJOR<br>NO SYMBOL = MINOR DIMENSION | <b>UNLESS SPECIFIED:</b><br>ALL DIMENSIONS IN INCHES<br>GENERAL TOLERANCES:<br>3 PLACE ±.005<br>2 PLACE ±.01<br>ANGULAR ±2°<br>ALL EXTERNAL SPECIFICATIONS REFERENCED ON THIS DRAWING SHALL BE THE LATEST REVISION IN EFFECT<br>Ulti-Mate CAGE CODE <b>58967</b> | SCALE <b>4:1</b><br>DWG SIZE <b>B</b>                                      | THIRD ANGLE PROJECTION<br><b>REVISE ON CAD ONLY</b> |  |
|   | DRAWN BY & DATE<br>JB 11/05/2013<br>CHECKED BY & DATE<br>DW 11-5-13<br>APPROVED BY & DATE<br>DW 11-5-13  | TITLE<br>MICRO-D CIRCUIT CONNECTOR, RECEPTACLE, STYLE 8, SIZE 9 CA8R09S07T | MATERIAL<br>3                                       | ENG PROJECT #<br>DRAWING NO.<br>SD-836410818 |
|   | CAD FILENAME<br>SD-836410818.slddrw  | PART NO.<br>836410818  | SHEET NO.<br>1 OF 1                                 | SHEET NO.<br>1 OF 1                          |
|   | THIS DRAWING CONTAINS INFORMATION THAT IS PROPRIETARY TO ULTI-MATE INCORPORATED AND SHOULD NOT BE USED WITHOUT WRITTEN PERMISSION.   |  |   | PART REV.<br>-                               |

