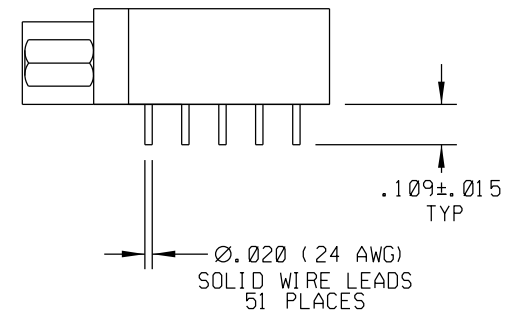
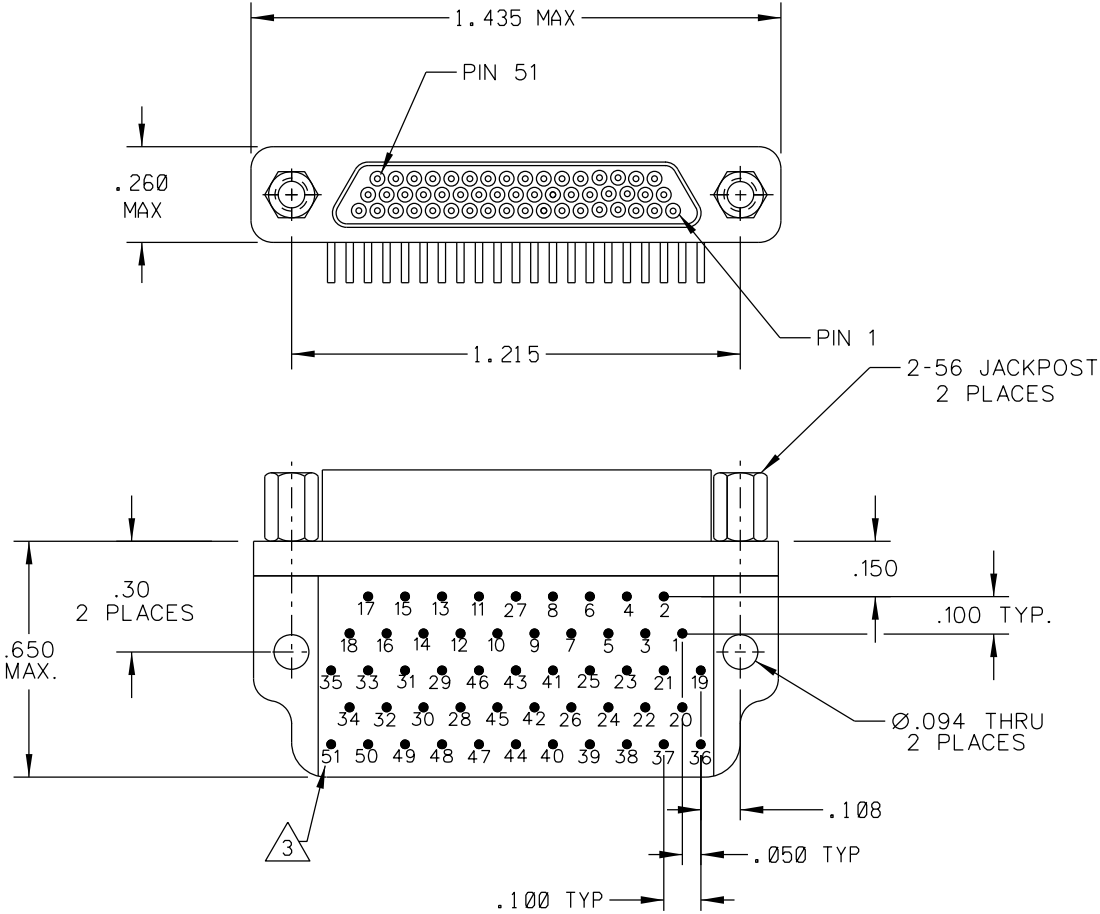


PART REV	DWG ISSUE	DATE	ECN NO.	APPVD BY	REL BY
-	-	9-16-11	UMI 4566		



3 NUMBERS SHOWN ON BACKSHELL ARE FOR REFERENCE ONLY AND DO NOT APPEAR ON THE BACKSHELL.

2 MATERIALS:
 SHELL: 6061-T6 ALUMINUM PER SAE-AMS-QQ-A200/8,
 CADMIUM PLATED PER SAE-AMS-QQ-P-416
 CONTACTS: C17200 BERYLLIUM COPPER PER ASTM B194,
 GOLD PLATED PER ASTM B488
 INSULATOR AND BACKSHELL: PPS PER MIL-M-24519 GST-40F, COLOR: BLACK
 HARDWARE: PASSIVATED STAINLESS STEEL IAW MIL-DTL-83513/5

1. MARKING: "UMI", UMI DATE CODE, UMI P/N.

NOTES: UNLESS OTHERWISE SPECIFIED

QUALITY SYMBOLS MAJOR CRITICAL SPC	UNLESS SPECIFIED: ALL DIMENSIONS IN INCHES	SCALE 3 : 1	DWG SIZE B	THIRD ANGLE PROJECTION	REVISE ON CAD ONLY
	GENERAL TOLERANCES: 3 PLACE ± .005 2 PLACE ± .01 ANGULAR ± 2°	DRAWN BY & DATE DW 9-16-11	TITLE: CIRCUIT SERIES PLUG, METAL SHELL, SIZE 51-3, LOW PROFILE, STYLE 1 BACKSHELL, CAP1R51-3P07		
	Uti-Mate CAGE CODE 58967	CHECKED BY & DATE	MATERIAL:		
		APPROVED BY & DATE	CAD FILENAME SD-836370117.DGN	PART NO. 836370117	DRAWING NO. SD-836370117
		THIS DRAWING CONTAINS INFORMATION THAT IS PROPRIETARY TO ULTI-MATE INCORPORATED AND SHOULD NOT BE USED WITHOUT WRITTEN PERMISSION.			REV -

