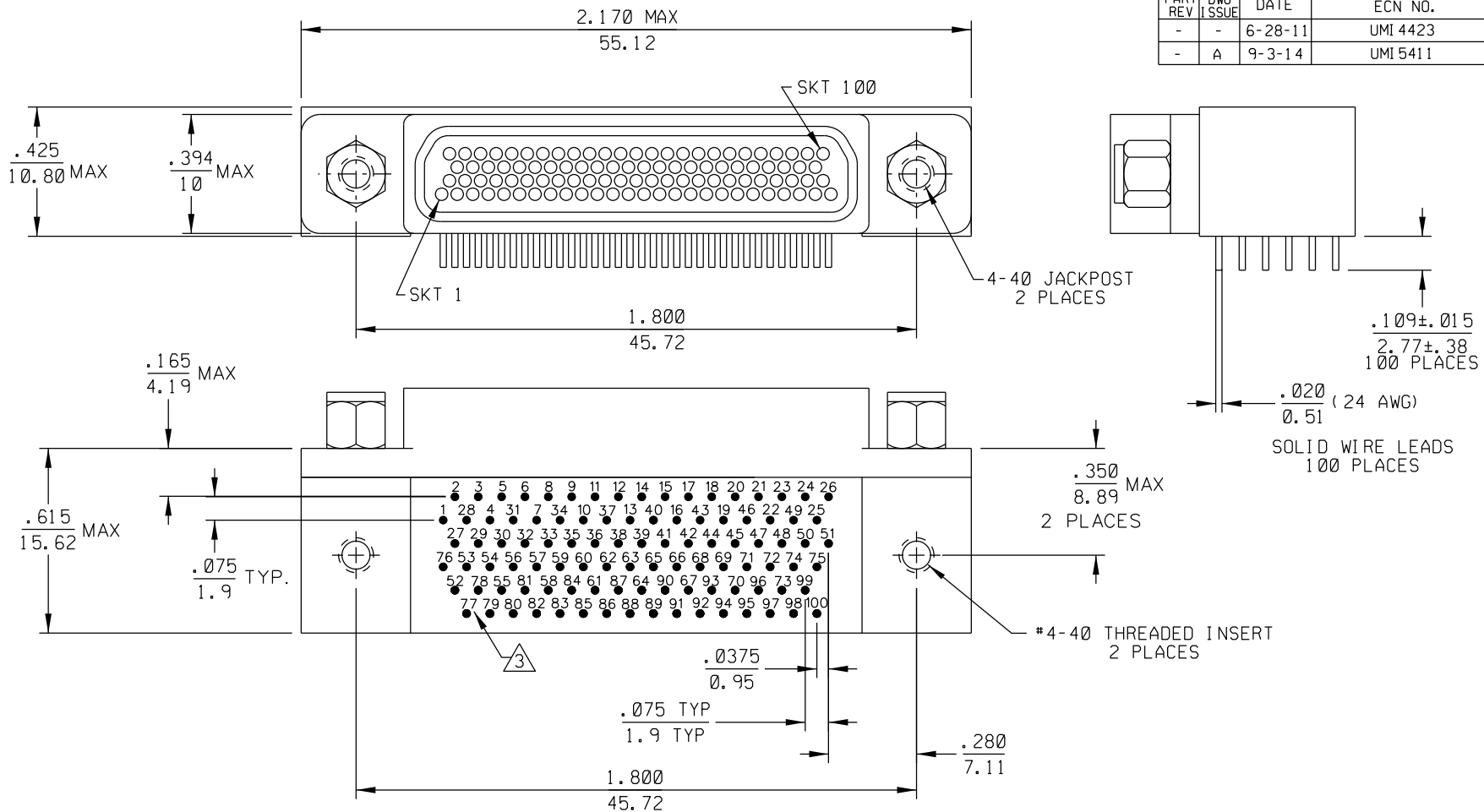


| PART REV | DWG ISSUE | DATE | ECN NO. | APPVD BY | REL BY |
|----------|-----------|---------|----------|----------|--------|
| - | - | 6-28-11 | UMI 4423 | DW | DW |
| - | A | 9-3-14 | UMI 5411 | DW | DW |



3 NUMBERS SHOWN ON BACKSHELL ARE REFERENCE ONLY AND DO NOT APPEAR ON PART.

2 MATERIALS:
 SHELL: 6061-T6 ALUMINUM PER SAE-AMS-QQ-A200/8,
 CADMIUM PLATED PER SAE-AMS-QQ-P-416
 INSULATOR: PPS PER MIL-M-24519 GST-40F, COLOR: BLACK
 SOCKET CONTACTS: CDA 210 BRASS ALLOY PER ASTM B36,
 GOLD PLATED PER ASTM B488
 24 AWG LEADS: TIN PLATED COPPER
 INSERTS AND JACKPOSTS: STAINLESS STEEL IAW MIL-DTL-83513
 INTERFACIAL SEAL: FLOUROSILICONE ELASTOMER PER MIL-R-25988
 1. MARKING: UMI, DATE CODE, UMI P/N.
 NOTES: UNLESS OTHERWISE SPECIFIED.

| QUALITY SYMBOLS | UNLESS SPECIFIED: ALL DIMENSIONS IN INCHES/MM | SCALE 3 : 1 | DWG SIZE B | THIRD ANGLE PROJECTION | REVISE ON CAD ONLY |
|-----------------|---|---|----------------------------------|--|--|
| CRITICAL C | GENERAL TOLERANCES: 3 PLACE ± .005 2 PLACE ± .01 ANGULAR ± 2° | DRAWN BY & DATE DW 6-28-11 | CHECKED BY & DATE SEE ECN | TITLE: CIRCUIT CONNECTOR, FEMALE, SIZE 100, STYLE 8 (90°), W/JACKPOSTS AND THREADED INSERTS, CM8R100S17T | |
| SPECIAL S | ALL EXTERNAL SPECIFICATIONS REFERENCED ON THIS DRAWING SHALL BE TO THE LATEST REVISION IN EFFECT | APPROVED BY & DATE SEE ECN | CAD FILENAME SD-836280818.DGN | PART NO. 836280818 | MATERIAL: 2 Uti-Mate Connector Inc. |
| KEY K | Uti-Mate CAGE CODE 58967 | THIS DRAWING CONTAINS INFORMATION THAT IS PROPRIETARY TO ULTI-MATE INCORPORATED AND SHOULD NOT BE USED WITHOUT WRITTEN PERMISSION. | | PART REV - | SHEET NO. 1 OF 1 |