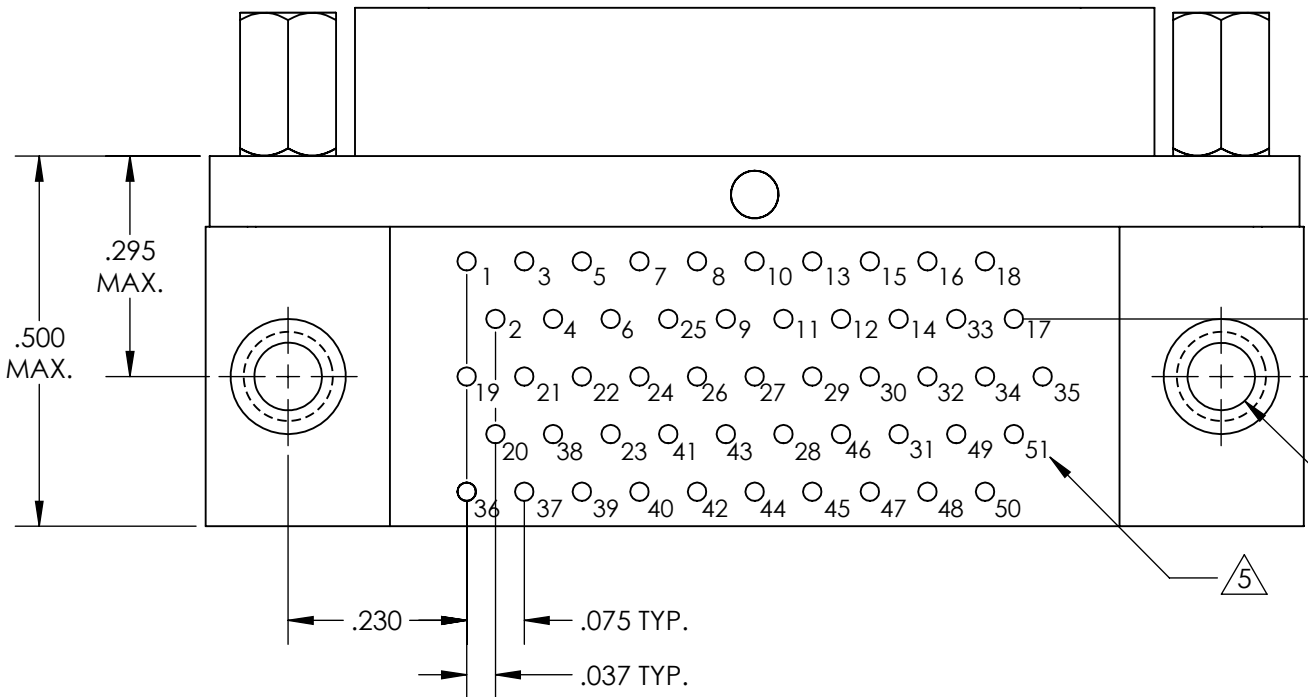
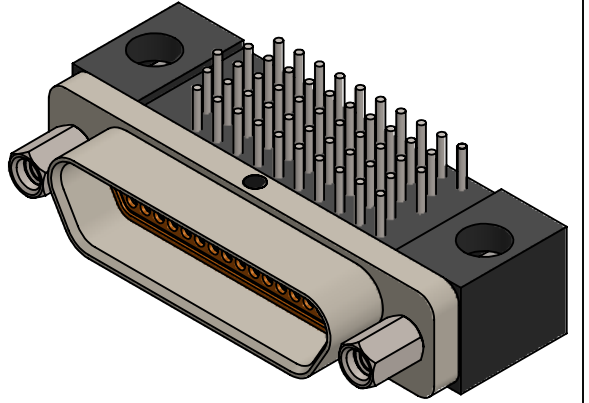
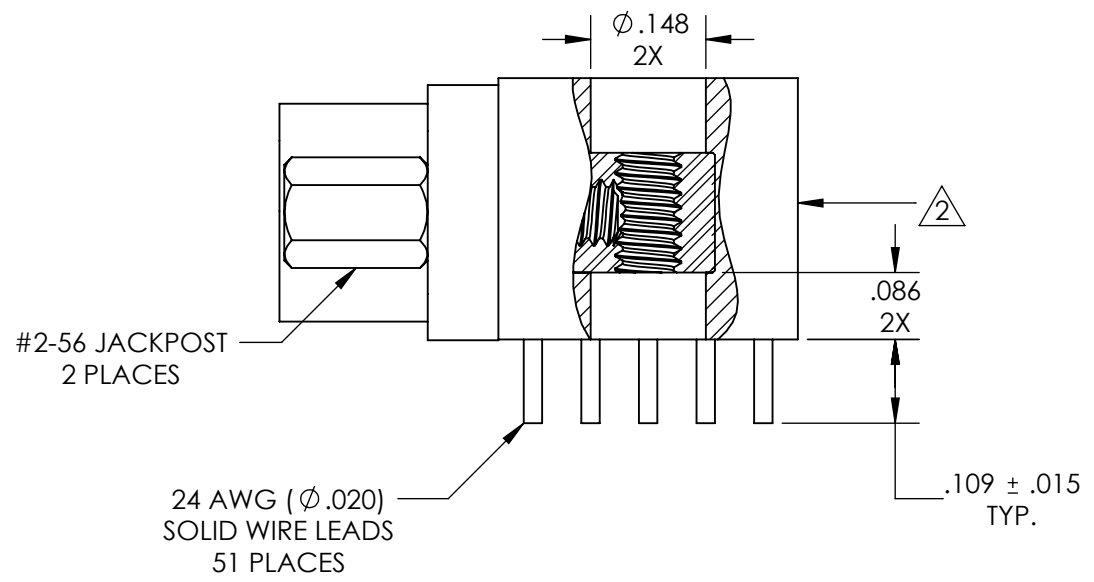
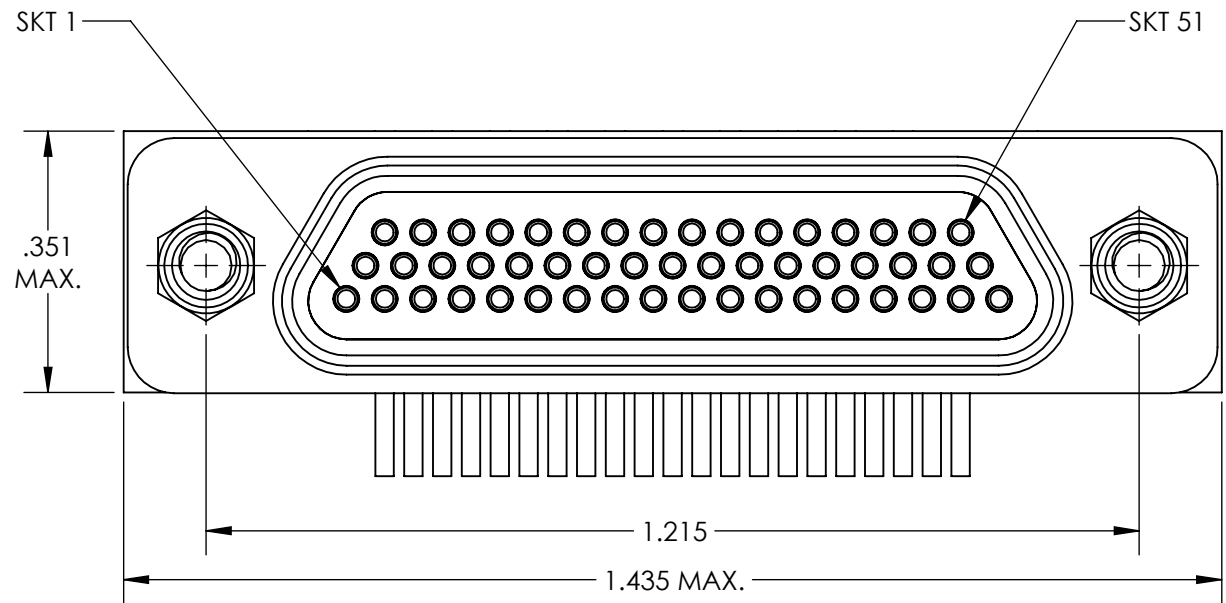


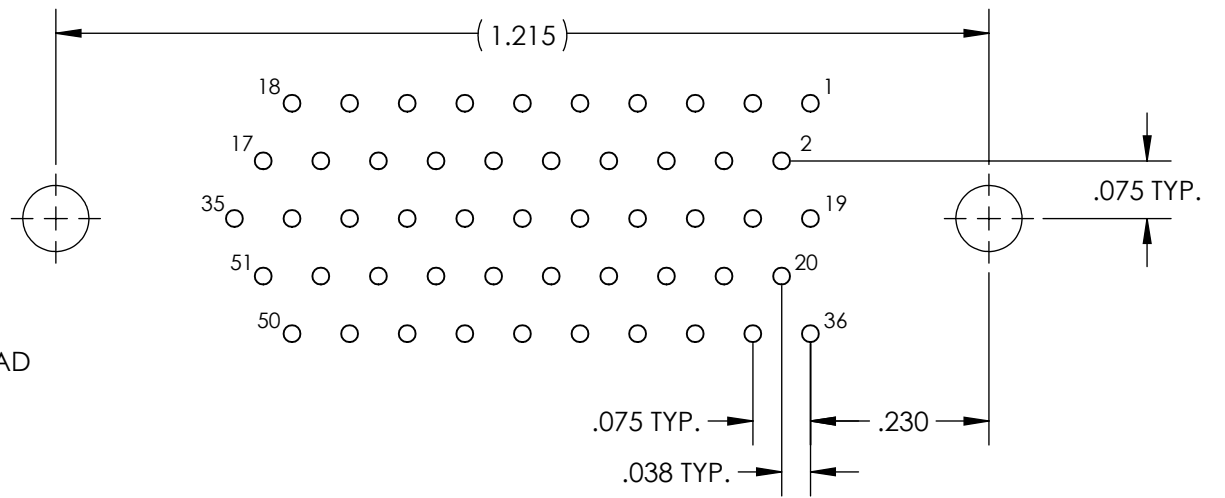
REVISIONS

PART REV.	DWG. ISSUE	DATE	ECN NO.	APPVD. BY	REL. BY
-	-	07/29/2019	UMI7226	DW	DW
-	A	09/19/2019	UMI7278	FA	DW

F  
E  
D  
C  
B  
A



RECOMMENDED PCB LAYOUT



- 5 NUMBERS ARE FOR REFERENCE ONLY AND DO NOT APPEAR ON PART
  - 4. PERFORMANCE SPECIFICATIONS:  
CURRENT RATING: 3A MAX.  
INSULATION RESISTANCE: 5000 MΩ MIN.  
DWV: 600 VAC  
TEMPERATURE RATING: 125°C
  - 3 MATERIALS:  
SHELL: 6061-T6 ALUMINUM PER AMS-QQ-A200/8, NICKEL PLATED PER AMS 2404  
INSULATOR AND BACKSHELL: PPS PER MIL-M-24519 GST-40F, COLOR: BLK  
SOCKET CONTACTS: C21000 COPPER ALLOY PER ASTM B36, GOLD PLATED PER ASTM B488  
24 AWG LEADS: TIN PLATED COPPER ALLOY PER A-A-59551 TYPE S  
HARDWARE: PASSIVATED STAINLESS STEEL IAW MIL-DTL-83513/5  
INTERFACIAL SEAL: FLUOROSILICONE PER MIL-R-25988
  - 2 MARKINGS: "UMI", DATE CODE, WORK ORDER NUMBER, AND UMI PART NUMBER
  - 1. CONNECTOR ASSEMBLY IS IAW MIL-DTL-83513 UNLESS OTHERWISE SPECIFIED
- NOTES: UNLESS OTHERWISE SPECIFIED

QUALITY SYMBOLS CRITICAL MAJOR NO SYMBOL = MINOR DIMENSION	<b>UNLESS SPECIFIED:</b> ALL DIMENSIONS IN INCHES GENERAL TOLERANCES: 3 PLACE ±.005 2 PLACE ±.01 ANGULAR ±2° ALL EXTERNAL SPECIFICATIONS REFERENCED ON THIS DRAWING SHALL BE THE LATEST REVISION IN EFFECT Ulti-Mate CAGE CODE <b>58967</b>	SCALE <b>4:1</b>	DWG SIZE <b>B</b>	THIRD ANGLE PROJECTION	<b>REVISE ON CAD ONLY</b>	
	DRAWN BY & DATE JB 03/01/2017	TITLE MICRO-D CIRCUIT CONNECTOR, RECEPTACLE (SOCKETS), 51 POSITION, 3 ROW STYLE 8, W/THREADED INSERTS CM8R51-3S07T-S01		MATERIAL 3	ENG PROJECT #	SHEET NO. <b>1 OF 1</b>
	CHECKED BY & DATE DW 03/01/2017	APPROVED BY & DATE DW 03/01/2017		PART NO. 836271818	DRAWING NO. SD-836271818	PART REV. -
	CAD FILENAME SD-836271818.slddrw	THIS DRAWING CONTAINS INFORMATION THAT IS PROPRIETARY TO ULTI-MATE INCORPORATED AND SHOULD NOT BE USED WITHOUT WRITTEN PERMISSION.				
	Ulti-Mate Connector Inc.					