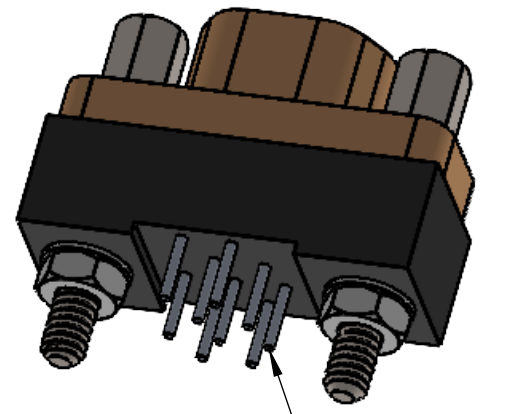
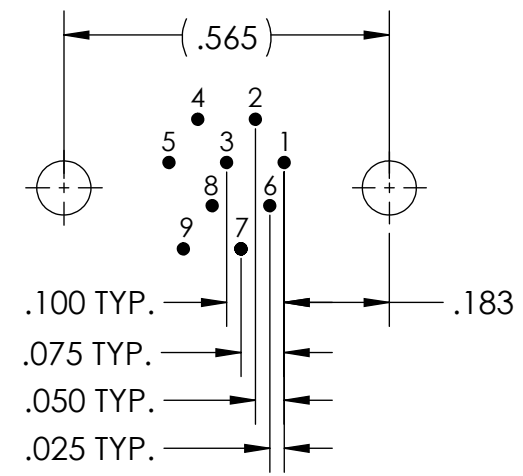


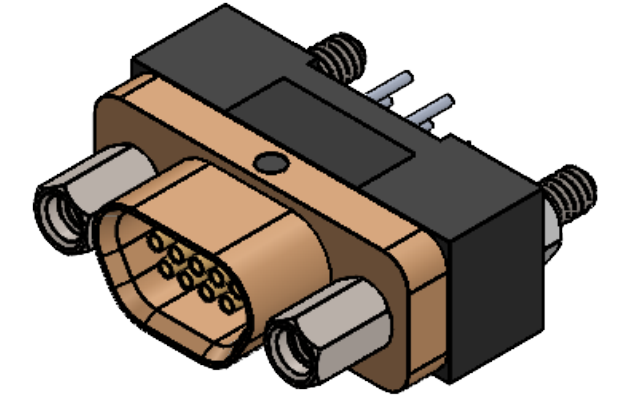
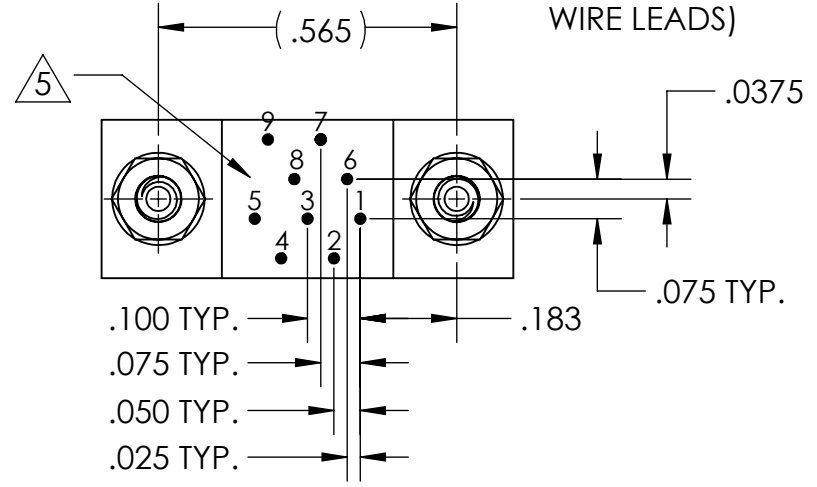
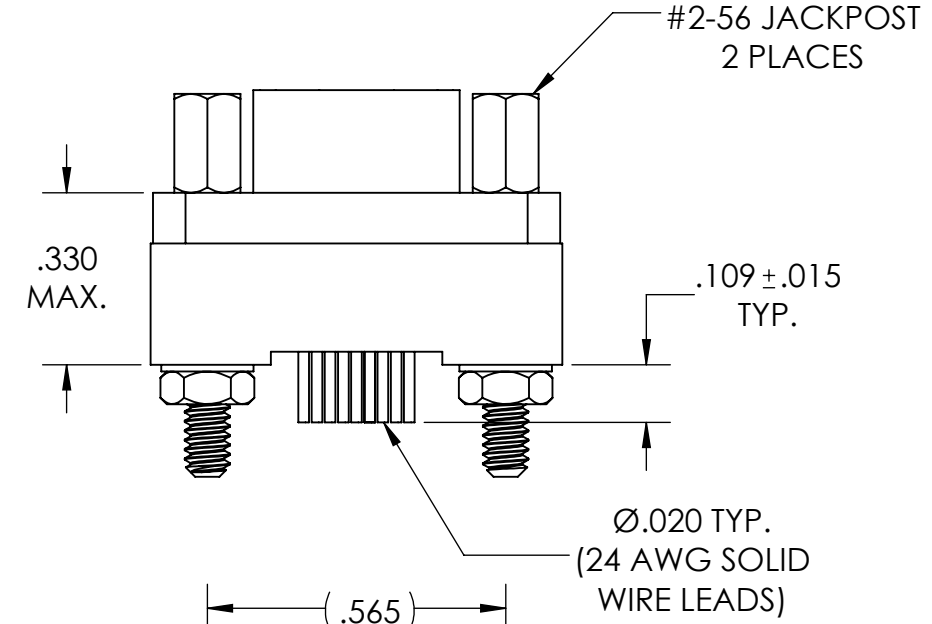
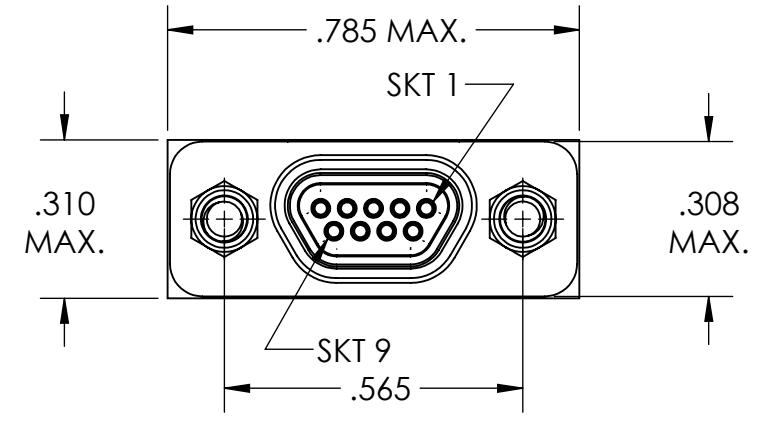
| REVISIONS |            |          |         |
|-----------|------------|----------|---------|
| PART REV. | DWG. ISSUE | DATE     | ECN NO. |
| -         | -          | 09/29/22 | UMI8153 |



POSITION 1  
**PCB VIEW**



**RECOMMENDED PCB LAYOUT**



- 6. CONTACT HEIGHTS ARE TO BE PER QA-STD-101.
- 5. NUMBER, (LEAD LOCATIONS) ARE SHOWN FOR REFERENCE ONLY AND DO NOT APPEAR ON ACTUAL PART.
- 4. PERFORMANCE SPECIFICATIONS:  
CURRENT RATING: 3 AMPS MAX.  
DWV: 600 VAC  
INSULATION RESISTANCE: 5000 MΩ MIN.  
TEMPERATURE RATING: -55°C TO 125°C
- 3. MATERIALS:  
SHELL: 6061-T6 ALUMINUM PER AMS-QQ-A200/8, CADMIUM PLATED PER AMS-QQ-P-416  
INSULATOR AND BACKSHELL: PPS PER MIL-M-24519 GST-40F, COLOR: BLACK  
SOCKET CONTACTS: C21000 COPPER ALLOY PER ASTM B36, GOLD PLATED PER ASTM B488  
24 AWG LEADS: TIN PLATED COPPER ALLOY PER A-A-59551, TYPE S  
HARDWARE: PASSIVATED STAINLESS STEEL, 300 SERIES  
INTERFACIAL SEAL: FLUOROSILICONE PER MIL-R-25988
- 2. MARKING: UMI, DATE CODE, UMI PART NUMBER AND WORK ORDER NUMBER
- 1. CONNECTOR ASSEMBLY IS IAW MIL-DTL-83513 UNLESS OTHERWISE SPECIFIED.

**NOTES: UNLESS OTHERWISE SPECIFIED**

|   |   |   |                             |                          |                     |  |
|---|---|---|-----------------------------|--------------------------|---------------------|--|
| QUALITY SYMBOLS<br>CRITICAL<br>MAJOR<br>NO SYMBOL = MINOR DIMENSION | <b>UNLESS SPECIFIED:</b><br>ALL DIMENSIONS IN INCHES<br>GENERAL TOLERANCES:<br>3 PLACE ±.005<br>2 PLACE ±.01<br>ANGULAR ±2°<br>ALL EXTERNAL SPECIFICATIONS REFERENCED ON THIS DRAWING SHALL BE THE LATEST REVISION IN EFFECT<br>Ulti-Mate CAGE CODE<br><b>58967</b> | SCALE<br>NONE   | DWG SIZE<br>B               | THIRD ANGLE PROJECTION   | REVISE ON CAD ONLY  |  |
|   | DRAWN BY<br>N.DO  | TITLE<br><b>MICRO-D CIRCUIT CONNECTOR, SIZE 9, RECEPTACLE CM6R09S07</b> |                             |                          | MATERIAL<br>3       |  |
|   | DATE DRAWN<br>09/29/2022  | ENG PROJECT #<br>NONE   |                             |                          | SHEET NO.<br>1 OF 1 |  |
|   | CAD FILENAME<br>SD-836210617.slddrw   | PART NO.<br>836210617   | DRAWING NO.<br>SD-836210617 | Ulti-Mate Connector Inc. |                     |  |
|   | THIS DRAWING CONTAINS INFORMATION THAT IS PROPRIETARY TO ULTI-MATE INCORPORATED AND SHOULD NOT BE USED WITHOUT WRITTEN PERMISSION.  |   |                             |                          | PART REV.<br>-      |  |