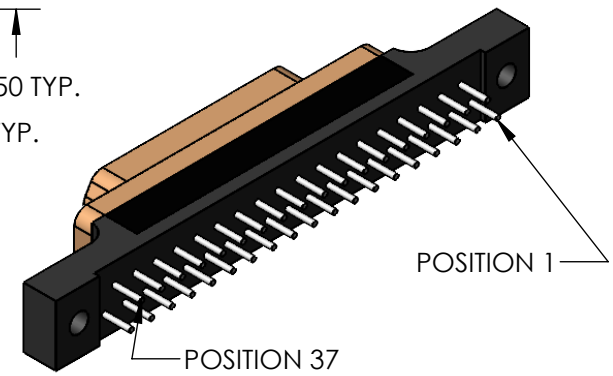
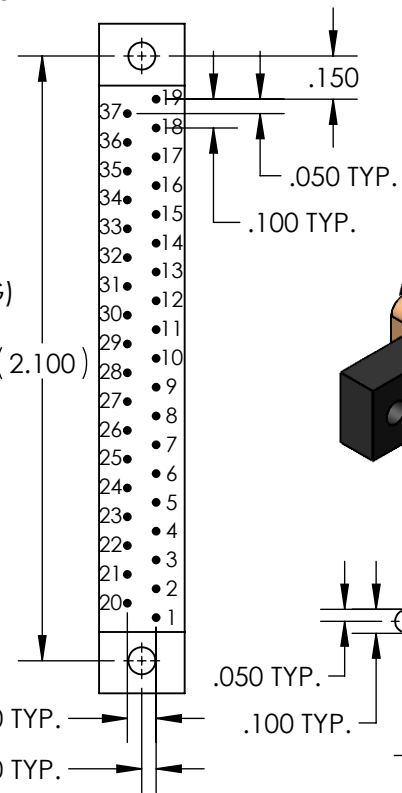
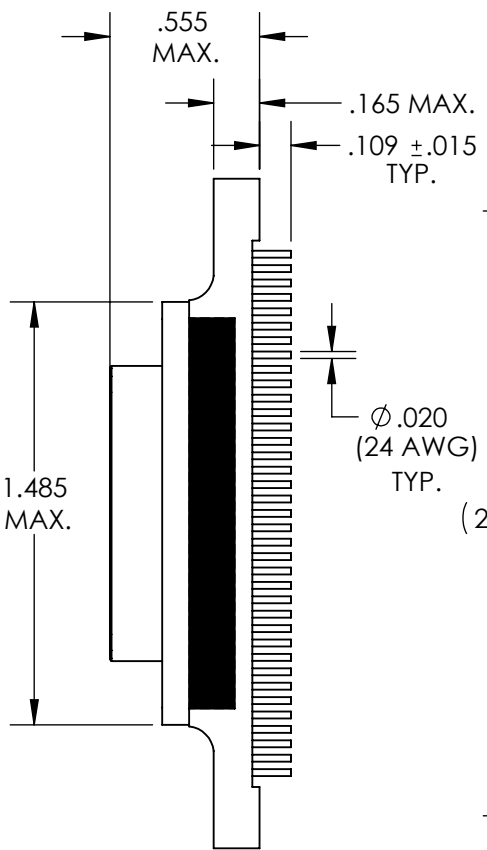
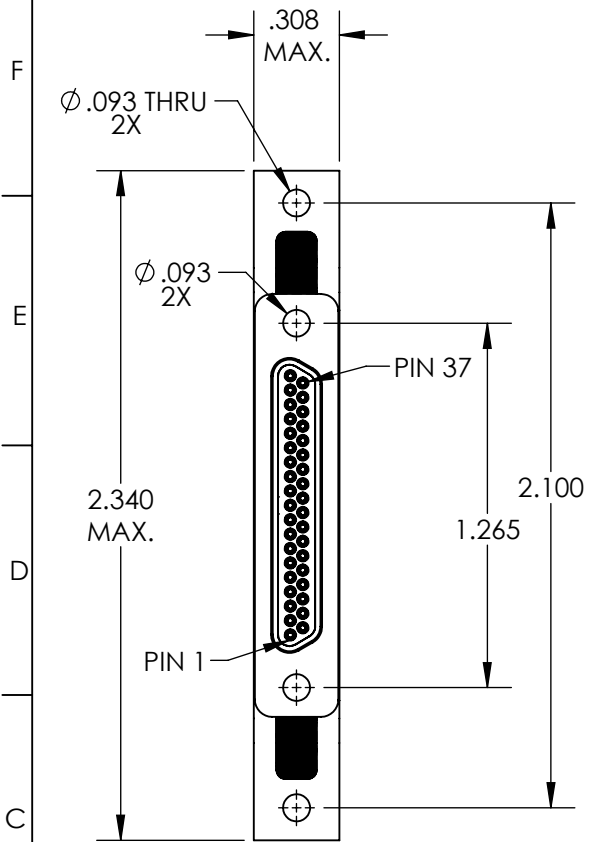
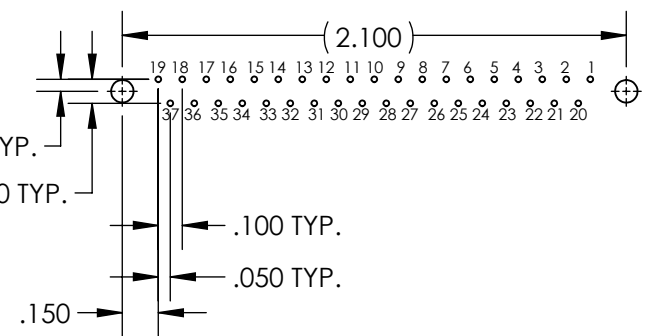


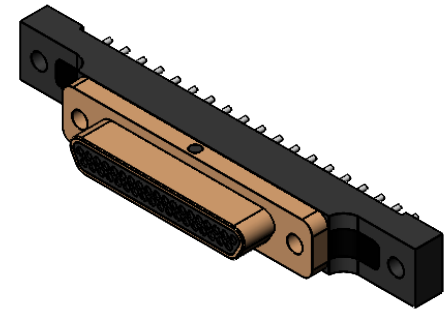
REVISIONS			
DWG. ISSUE	PART REV.	ECN NO.	DATE
-	-	UMI8150	09/28/2022



PCB VIEW



RECOMENDED PCB LAYOUT



- 4. CONTACT HEIGHTS ARE TO BE PER QA-STD-101.
- 3. PERFORMANCE SPECIFICATIONS:
CURRENT RATING: 3A MAX.
DWV: 600 VAC
TEMPERATURE RATING: -55°C TO 125°C

- 2. MATERIALS:
SHELL: 6061-T6 ALUMINUM PER AMS-QQ-A200/8, CADMIUM PLATED PER AMS-QQ-P-416.
INSULATOR: PPS PER MIL-M-24519 GST-40F, COLOR: BLK
PIN CONTACTS: C17200 BERYLLIUM COPPER ALLOY PER ASTM B194, GOLD PLATED PER ASTM B488
24 AWG LEADS: TIN PLATED COPPER ALLOY PER A-A-59551, TYPE S.

1. MARKING: "UMI", DATE CODE, UMI PART NUMBER, UMI WORK ORDER NUMBER.
NOTES: UNLESS OTHERWISE SPECIFIED

QUALITY SYMBOLS MAJOR CRITICAL SPC	UNLESS SPECIFIED: ALL DIMENSIONS IN INCHES	SCALE 3:1	DWG SIZE A	THIRD ANGLE PROJECTION	REVISE ON CAD ONLY
	GENERAL TOLERANCES: 3 PLACE ±.002 2 PLACE ±.005 ANGULAR ±2°	DRAWN BY & DATE D. URBACH 9/28/2022	TITLE MICRO-D CONNECTOR, PLUG, SIZE 37		MATERIAL CM4R37P0, CADMIUM PLATED SHELL
Uli-Mate CAGE CODE 58967	CHECKED BY & DATE	CAD FILENAME SD-834251530.SLDDRW	PART NO. 834251530	DRAWING NO. SD-836160410	SHEET NO. 1 OF 1
THIS DRAWING CONTAINS INFORMATION THAT IS PROPRIETARY TO ULTI-MATE INCORPORATED AND SHOULD NOT BE USED WITHOUT WRITTEN PERMISSION.				PART REV. -	