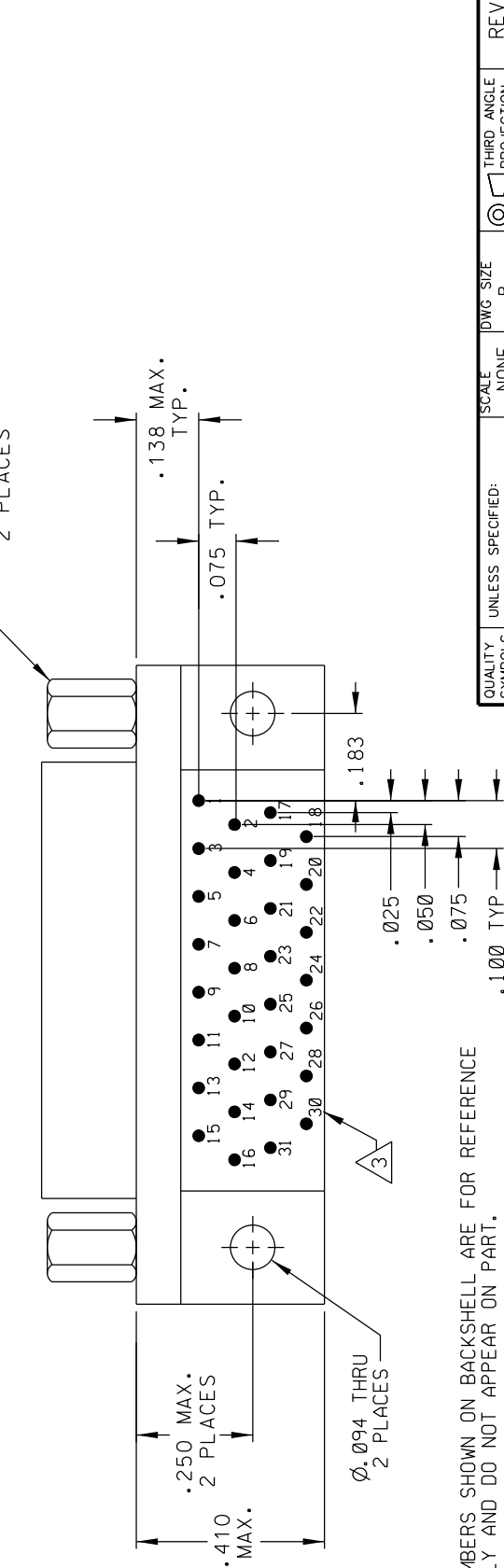
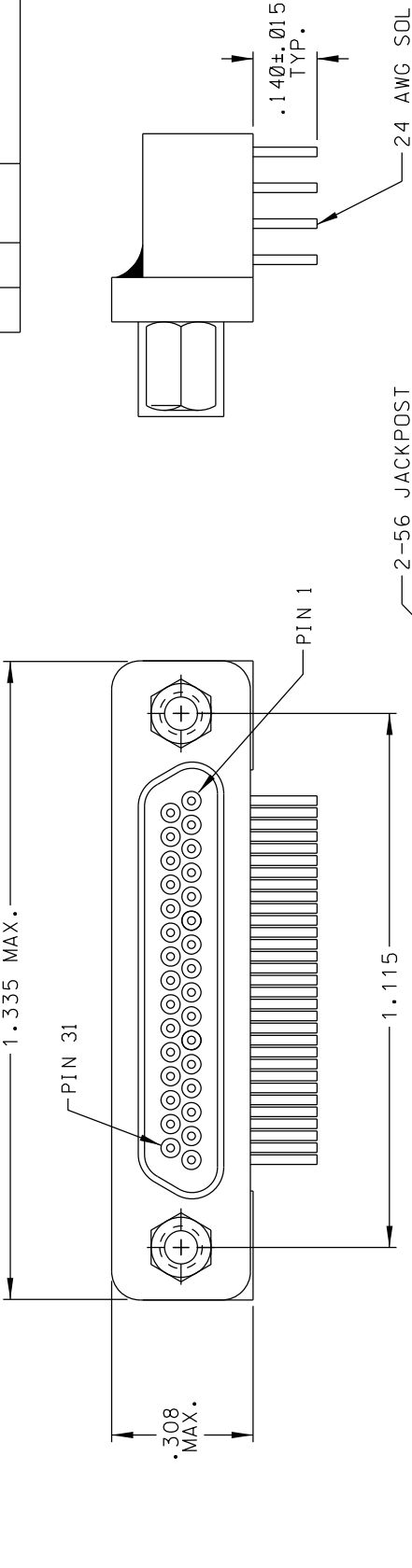


|              |          |        |
|--------------|----------|--------|
| SD-836151827 | APPVD BY | REL BY |
| ECN NO.      | UMI 4197 |        |
| DATE         | 10-11-10 |        |
| PART / DWG   |          |        |
| REV / ISSUE  |          |        |



3 NUMBERS SHOWN ON BACKSHELL ARE FOR REFERENCE ONLY AND DO NOT APPEAR ON PART.

2 MATERIALS:  
 SHELL: 6061-T6 ALUMINUM PER AMS-00-A200/8 NICKEL PLATED PER AMS 2404  
 INSULATOR AND BACKSHELL: PPS PER MIL-M-24519 GST-40F  
 PIN CONTACTS: C1.7200 BERYLLIUM COPPER PER ASTM B194,  
 GOLD PLATED PER ASTM B488-01  
 24 AWG SOLID WIRE LEADS: TIN PLATED COPPER ALLOY  
 HARDWARE: STAINLESS STEEL, PASSIVATED PER AMS 2700

1. MARKING: UMI, DATE CODE, UMI P/N.  
 NOTES: UNLESS OTHERWISE SPECIFIED.

|                 |   |                    |          |                        |  |
|-----------------|---|--------------------|----------|------------------------|--|
| QUALITY SYMBOLS | UNLESS SPECIFIED:<br>ALL DIMENSIONS IN INCHES | SCALE              | DWG SIZE | THIRD ANGLE PROJECTION | REVISE ON CAD ONLY   |
| MAJOR           | GENERAL TOLERANCES:                           | NONE               | B        |                        |  |
| MINOR           | 3 PLACE ±.005                                 | DW                 | 10-11-10 |                        | TITLE:<br>CIRCUIT CONNECTOR, MALE,<br>SIZE 31, STYLE 8 90° BACKSHELL,<br>CM8R31P07-0.140-S01 |
| CRITICAL        | 2 PLACE ±.01                                  | CHECKED BY & DATE  |          |                        | MATERIAL:  |
| ANGULAR         | ANGULAR ±2°                                   | APPROVED BY & DATE |          |                        |  |
| SPC             | UMI-Mate CASE CODE                            | CAD FILENAME       |          |                        | PART NO.   |
|                 | 58967   | SD-836151827.DGN   |          |                        | 836151827  |
|                 |   | DRAWING NO.        |          |                        | SD-836151827   |
|                 |   | SHEET NO.          |          |                        | 1 OF 1   |
|                 |   | REV                |          |                        | -  |

