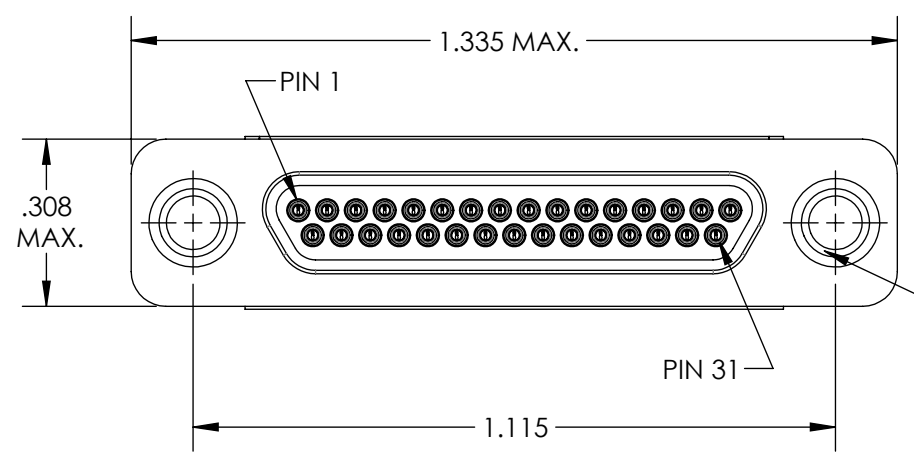
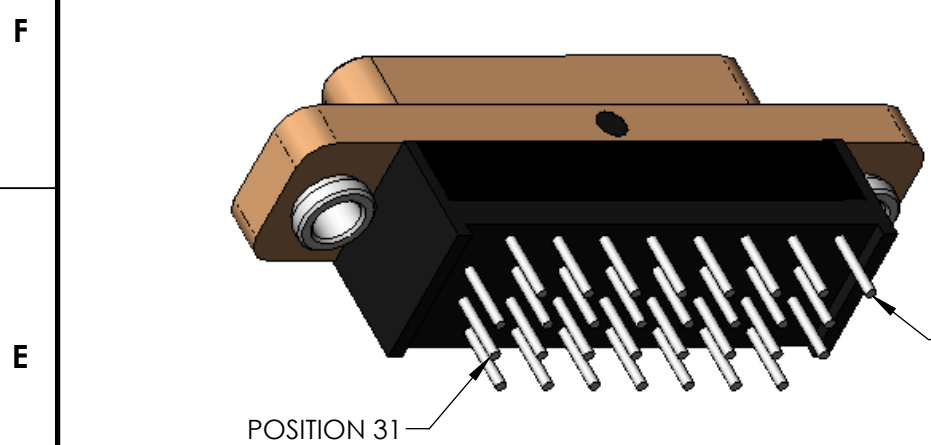
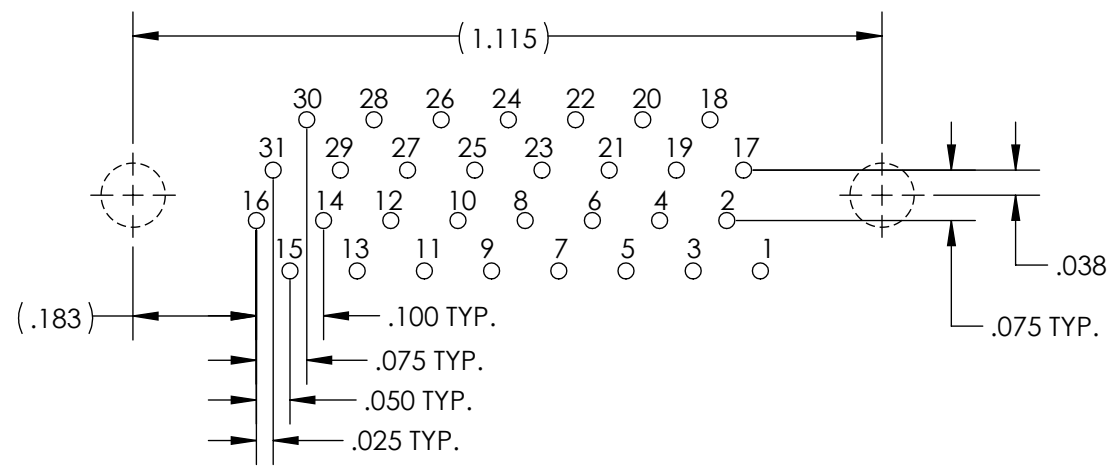


PART REV	DWG ISSUE	DATE	ECN NO.	APPVD BY	REL BY
-	-	8/4/15	UMI5699	DW	DW

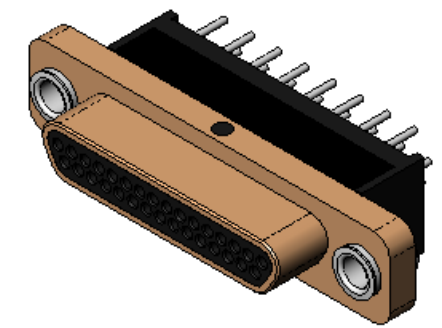
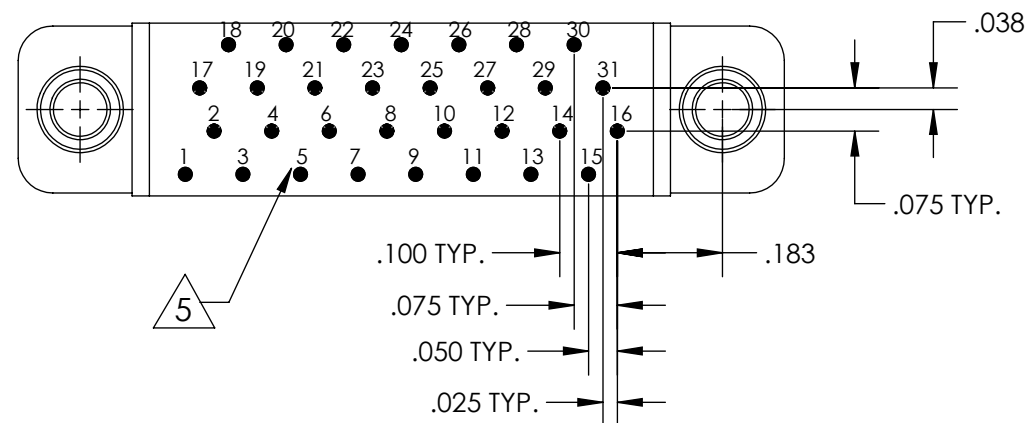
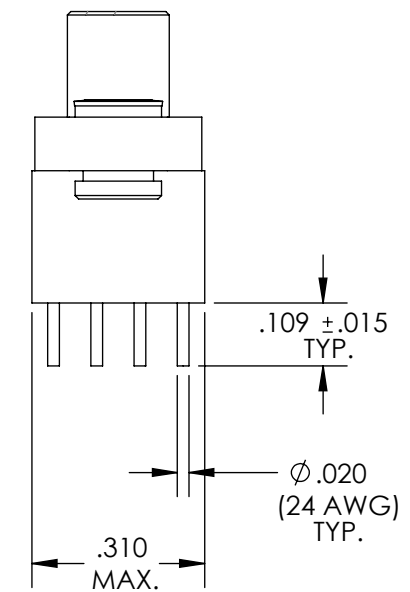
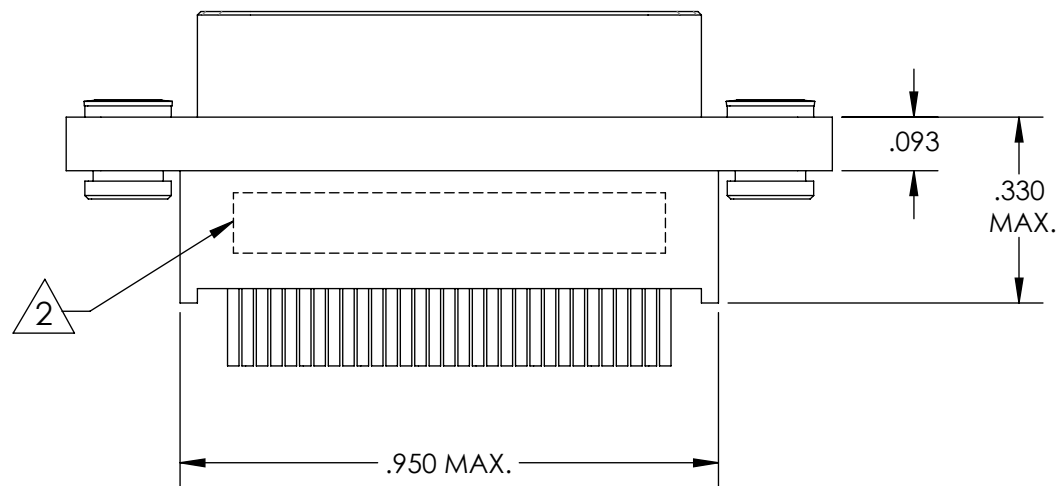


Ø .096 MAX. THRU  
ALLOWABLE DIAMETRAL FLOAT .014 ±.004  
ALLOWABLE AXIAL FLOAT .020 MAX.  
2X

**PCB VIEW**



**RECOMMENDED PCB LAYOUT**



5 NUMBERS, (LEAD LOCATIONS), ARE SHOWN FOR REFERENCE ONLY AND DO NOT APPEAR ON ACTUAL PART.

4. PERFORMANCE SPECIFICATIONS:  
CURRENT RATING: 3 AMPS MAX.  
DWV: 600 VAC  
TEMPERATURE RATING: 125° C

3 MATERIALS:  
SHELL: 6061-T6 ALUMINUM PER AMS-QQ-A200/8, CADMIUM PLATED PER AMS-QQ-P-416  
INSULATOR AND BACKSHELL: PPS PER MIL-M-24519 GST-40F, COLOR: BLACK  
PIN CONTACTS: C17200 BERYLLIUM COPPER PER ASTM B194, GOLD PLATED PER ASTM B488  
24 AWG LEADS: TINPLATED COPPER ALLOY PER A-A-59551, TYPE S  
HARDWARE: PASSIVATED 300 SERIES STAINLESS STEEL

2 MARKING: "UMI", DATE CODE, UMI PART NUMBER.

1. CONNECTOR ASSEMBLY IS IAW MIL-DTL-83513 UNLESS OTHERWISE SPECIFIED.  
**NOTES: UNLESS OTHERWISE SPECIFIED.**

QUALITY SYMBOLS CRITICAL MAJOR NO SYMBOLS = MINOR DIMENSIONS	UNLESS OTHERWISE SPECIFIED: ALL DIMENSIONS ARE IN INCHES	SCALE: NONE	DWG SIZE: B	THIRD ANGLE PROJECTION	REVISE ON CAD ONLY	
	GENERAL TOLERANCES:  3 PLACES ±.005 2 PLACES ±.01 ANGULAR ±2°	DRAWN BY & DATE: DU 8/4/15		TITLE: MICRO-D CIRCUIT CONNECTOR, CM16R31P0-F01, FLOAT MOUNTS, .109 LEADS, CADMIUM PLATED		
		CHECKED BY & DATE: DW 8/4/15		MATERIAL: 3	ENG PROJECT #:	
		APPROVED BY & DATE: DW 8/4/15			NONE	
	ULTI-MATE CAGE CODE: 58967		CAD FILE NAME: SD-836150711.DGN	PART NO.: 836150711	DRAWING NO.: SD-836150711	SHEET NO.: 1 of 1
THIS DRAWING CONTAINS INFORMATION THAT IS PROPRIETARY TO ULTI-MATE INCORPORATED AND SHOULD NOT BE USED WITHOUT WRITTEN PERMISSION.						