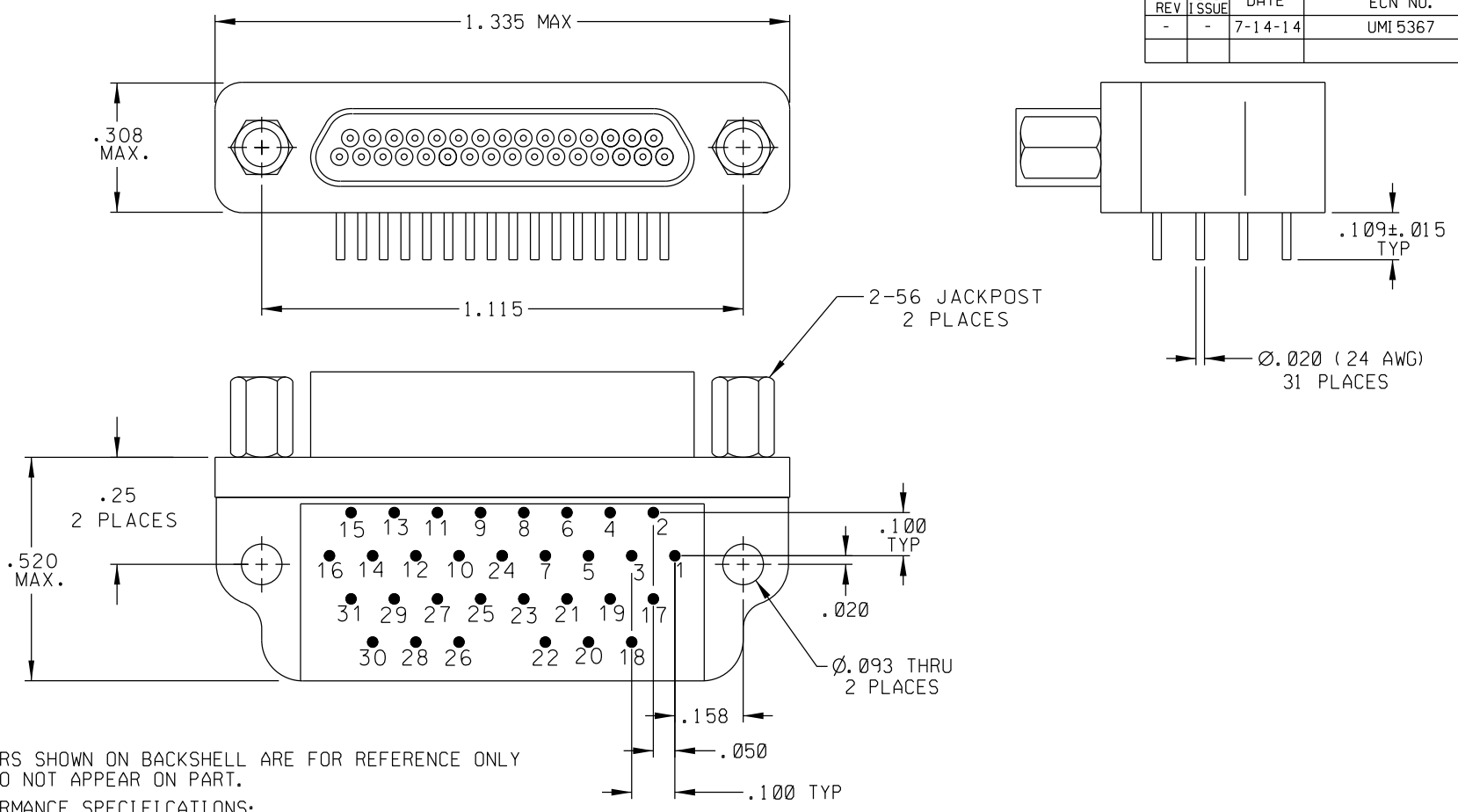


PART REV	DWG ISSUE	DATE	ECN NO.	APPVD BY	REL BY
-	-	7-14-14	UMI 5367	DW	DW



- 4. NUMBERS SHOWN ON BACKSHELL ARE FOR REFERENCE ONLY AND DO NOT APPEAR ON PART.
- 3. PERFORMANCE SPECIFICATIONS:
CURRENT RATING: 3A MAX
Dwv: 600 VAC
INSULATION RESISTANCE: 5000 MEGOHMS MIN.
TEMPERATURE RATING: 125°C
- 2. MATERIALS:
SHELL: 6061-T6 ALUMINUM PER SAE-AMS-QQ-A-200/8, CADMIUM PLATED PER SAE-AMS-QQ-P-416
INSULATOR AND BACKSHELL: PPS PER MIL-M-24519 GST-40F, COLOR: BLACK
PIN CONTACTS: C17200 BERYLLIUM COPPER PER ASTM B194, GOLD PLATED PER ASTM B488
HARDWARE: PASSIVATED STAINLESS STEEL IAW M83513/05

1. MARKING: UMI, DATE CODE, UMI P/N.
NOTES: UNLESS OTHERWISE SPECIFIED.

QUALITY SYMBOLS CRITICAL SPECIAL KEY	UNLESS SPECIFIED: ALL DIMENSIONS IN INCHES GENERAL TOLERANCES: 3 PLACE ±.005 2 PLACE ±.01 ANGULAR ±2°	SCALE 4:1	DWG SIZE B	THIRD ANGLE PROJECTION	REVISE ON CAD ONLY
	ALL EXTERNAL SPECIFICATIONS REFERENCED ON THIS DRAWING SHALL BE TO THE LATEST REVISION IN EFFECT Ulti-Mate CAGE CODE 58967	DRAWN BY & DATE DW 7-14-14 CHECKED BY & DATE SEE ECN APPROVED BY & DATE SEE ECN	TITLE: MICRO-D PCB RECEPTACLE, SIZE 31, STYLE 1, 90° BACKSHELL, CMI R31 P07		MATERIAL: 2 Ulti-Mate Connector Inc.
		CAD FILENAME SD-836150117.DGN	PART NO. 836150117	DRAWING NO. SD-836150117	SHEET NO. 1 OF 1 PART REV -