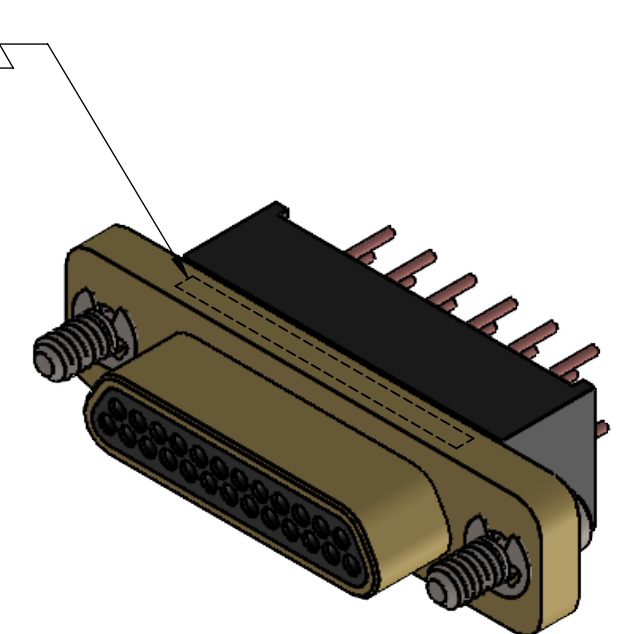
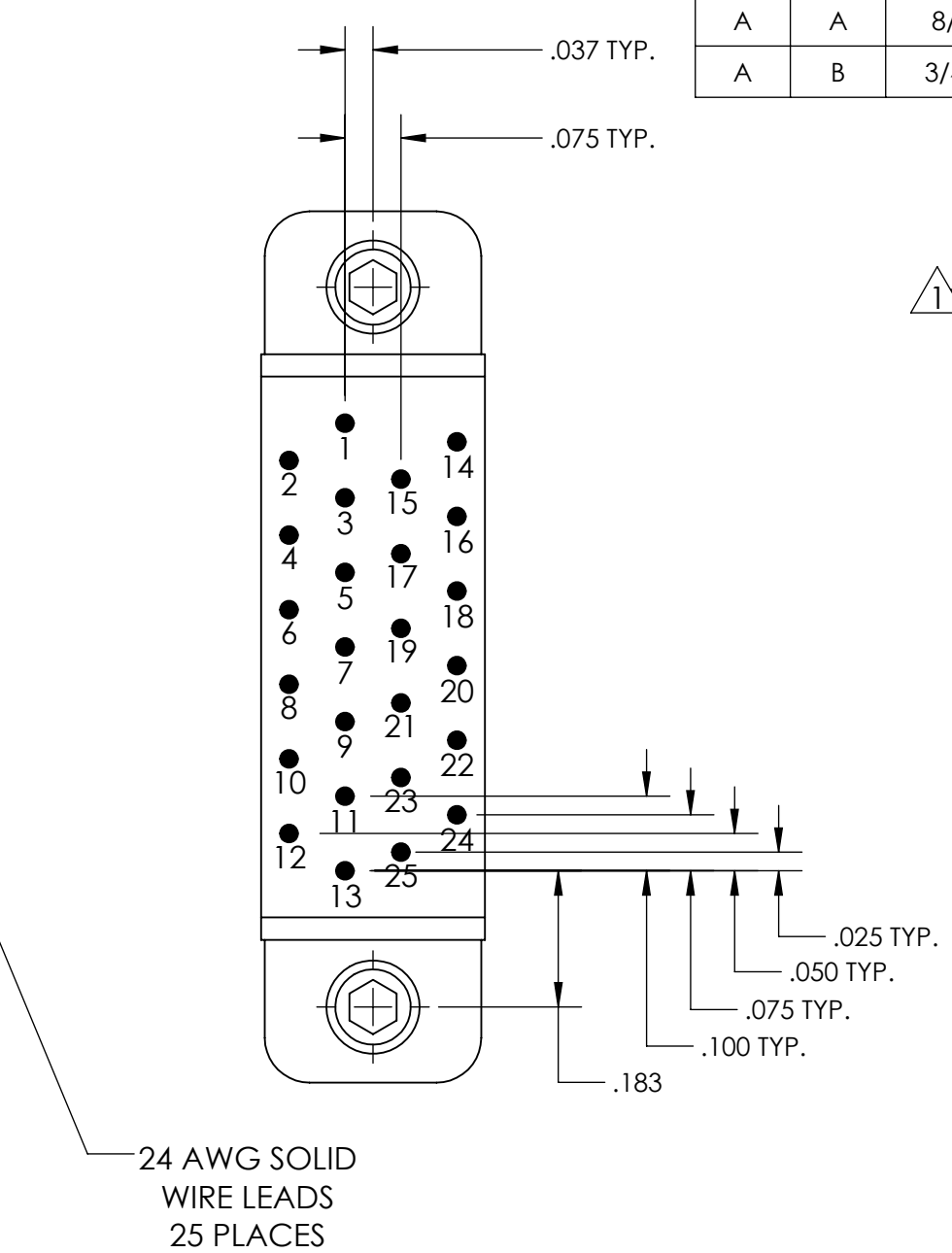
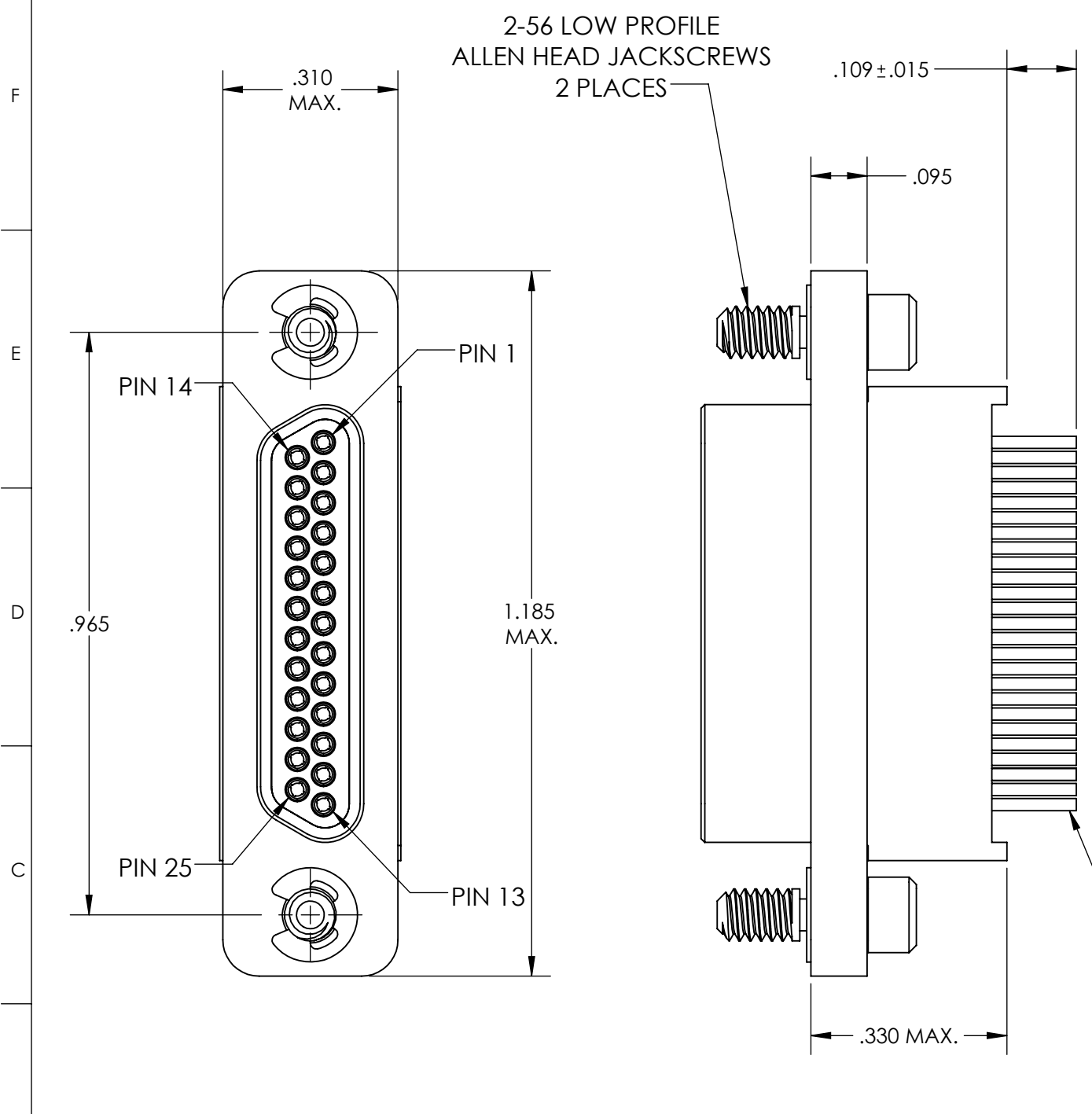


REVISIONS					
PART REV.	DWG. ISSUE	DATE	ECN NO.	APPVD. BY	REL. BY
-	-	3/10/10	UMI4059	DW	DW
A	A	8/28/17	UMI6490	DW	DW
A	B	3/4/2020	UMI7416	JA	DW



3. NUMBERS SHOWN ON BACKSHELL ARE FOR REFERENCE ONLY AND MAY NOT APPEAR ON PART.

2 MATERIALS:
 SHELL: 6061-T6 ALUMINUM PER AMS-QQ-A200/8, CAD PLATED PER AMS-QQ-P-416.
 INSULATOR AND BACKSHELL: PPS PER MIL-M-24519 GST-40F.
 PIN CONTACTS: C17200 BERYLLIUM COPPER, GOLD PLATED PER ASTM B488.
 24 AWG LEADS: TIN PLATED COPPER ALLOY.
 HARDWARE: STAINLESS STEEL, PASSIVATED PER AMS 2700.

1 MARKINGS: "UMI" , UMI PART NO., UMI WORK ORDER NO., AND DATE CODE.
 (MARKING LOCATION IS SHOWN FOR REFERENCE ONLY AND MAY VARY.)

NOTES: UNLESS OTHERWISE SPECIFIED

QUALITY SYMBOLS CRITICAL MAJOR NO SYMBOL = MINOR DIMENSION	UNLESS SPECIFIED: ALL DIMENSIONS IN INCHES GENERAL TOLERANCES: 3 PLACE ±.005 2 PLACE ±.01 ANGULAR ±2° ALL EXTERNAL SPECIFICATIONS REFERENCED ON THIS DRAWING SHALL BE THE LATEST REVISION IN EFFECT Ulti-Mate CAGE CODE 58967	SCALE 4:1	DWG SIZE B	THIRD ANGLE PROJECTION	REVISE ON CAD ONLY	
	DRAWN BY & DATE DR 08/28/2017	TITLE CIRCUIT CONNECTOR, PLUG, SIZE 25, STYLE 16, W/ JACKSCREWS, CMI6R25P02		MATERIAL 2	ENG PROJECT # -	SHEET NO. 1 OF 1
	CHECKED BY & DATE DW 08/28/2017	PART NO. 836140712				
	APPROVED BY & DATE DW 08/28/2017	CAD FILENAME SD-836140712.SLDDRW	THIS DRAWING CONTAINS INFORMATION THAT IS PROPRIETARY TO ULTI-MATE INCORPORATED AND SHOULD NOT BE USED WITHOUT WRITTEN PERMISSION.			