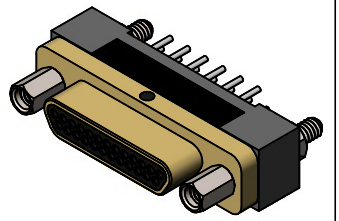
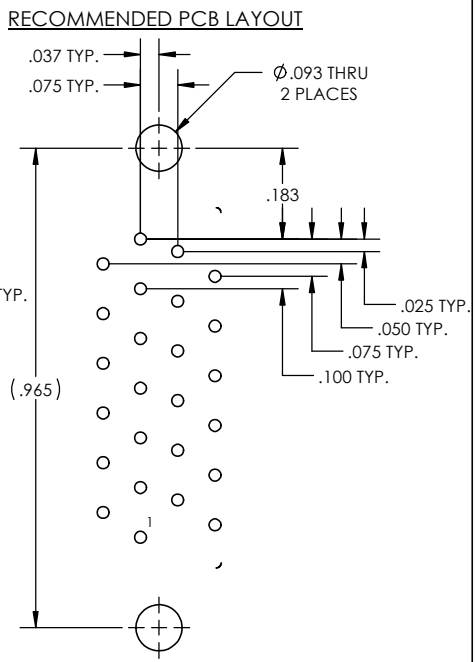
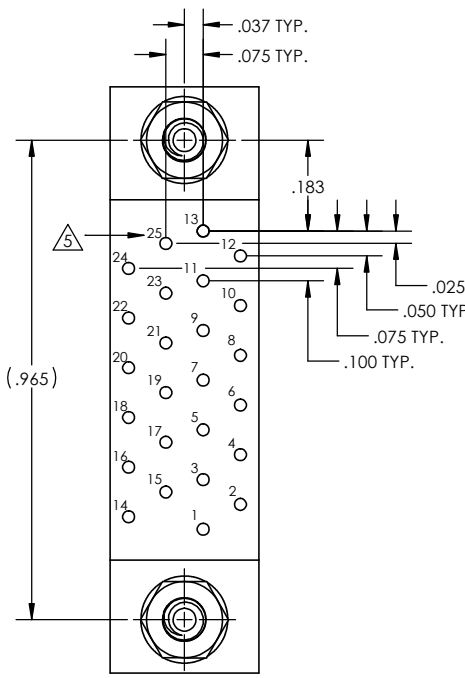
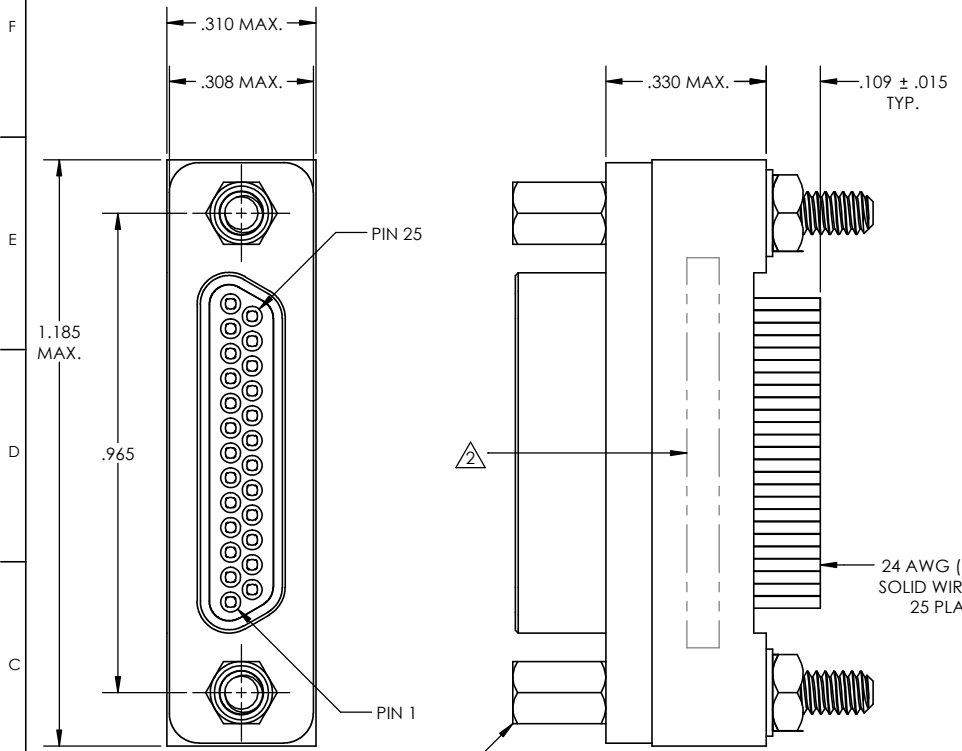


REVISIONS					
PART REV.	DWG. ISSUE	DATE	ECN NO.	APPVD. BY	REL. BY
A	A	07/26/2016	UMI6035	DW	DW
A	B	01/20/2023	UMI8238	DW	DW



- ④ NUMBERS ARE FOR REFERENCE ONLY AND DO NOT APPEAR ON PART
- 4. PERFORMANCE SPECIFICATIONS: (AT AMBIENT TEMPERATURE)  
CURRENT RATING: 3A MAX.  
INSULATION RESISTANCE: 5000 MΩ MIN.  
DWV: 600 VAC  
TEMPERATURE RATING: 125°C
- ③ MATERIALS:  
SHELL: 6061-T6 ALUMINUM PER AMS-QQ-A200/8, CADMIUM PLATED PER AMS-QQ-P-416  
INSULATOR AND BACKSHELL: PPS PER MIL-M-24519 GST-40F, COLOR: BLK  
PIN CONTACTS: C17200 BERYLLIUM COPPER PER ASTM B194, GOLD PLATED PER ASTM B488  
24 AWG LEADS: TIN PLATED COPPER ALLOY  
HARDWARE: PASSIVATED STAINLESS STEEL IAW MIL-DTL-83513/5
- ② MARKINGS: "UMI", DATE CODE, WORK ORDER NUMBER, AND UMI PART NUMBER
- 1. CONNECTOR ASSEMBLY IS IAW MIL-DTL-83513 UNLESS OTHERWISE SPECIFIED

**NOTES: UNLESS OTHERWISE SPECIFIED**

QUALITY SYMBOLS CRITICAL MAJOR NO SYMBOL = MINOR DIMENSION	<b>UNLESS SPECIFIED:</b> ALL DIMENSIONS IN INCHES GENERAL TOLERANCES: 3 PLACE ±.005 2 PLACE ±.01 ANGULAR ±2° ALL EXTERNAL SPECIFICATIONS REFERENCED ON THIS DRAWING SHALL BE THE LATEST REVISION IN EFFECT Ulti-Mate CAGE CODE <b>58967</b>	SCALE 4:1 DWG SIZE B DRAWN BY & DATE DW 10/17/2007 CHECKED BY & DATE SEE ECN APPROVED BY & DATE SEE ECN CAD FILENAME SD-836140617.slddrw	THIRD ANGLE PROJECTION REVISIONS TITLE MICRO-D CIRCUIT CONNECTOR, PLUG (PINS) 25 POSITION, STYLE 6, W/JACKPOSTS CM6R25P07 MATERIAL ENG PROJECT # DRAWING NO. SD-836140617 SHEET NO. 1 OF 1 PART REV. A
	REVISE ON CAD ONLY	PART NO. 836140617	DRAWING NO. SD-836140617
	THIS DRAWING CONTAINS INFORMATION THAT IS PROPRIETARY TO ULTI-MATE INCORPORATED AND SHOULD NOT BE USED WITHOUT WRITTEN PERMISSION.	PART REV. A	SHEET NO. 1 OF 1
	Ulti-Mate Connector Inc.	DRAWING NO. SD-836140617	SHEET NO. 1 OF 1