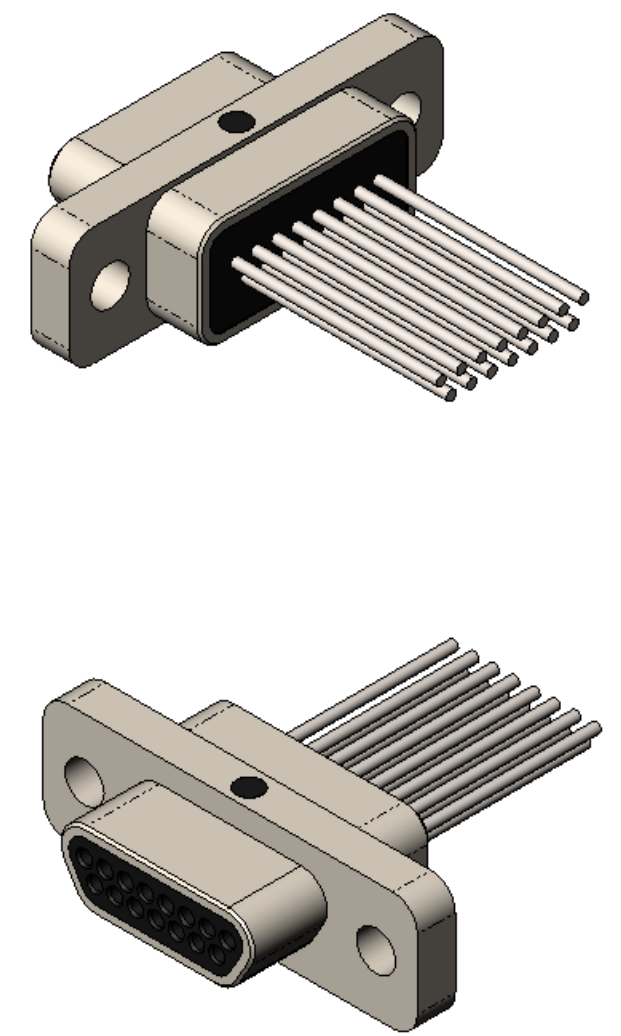
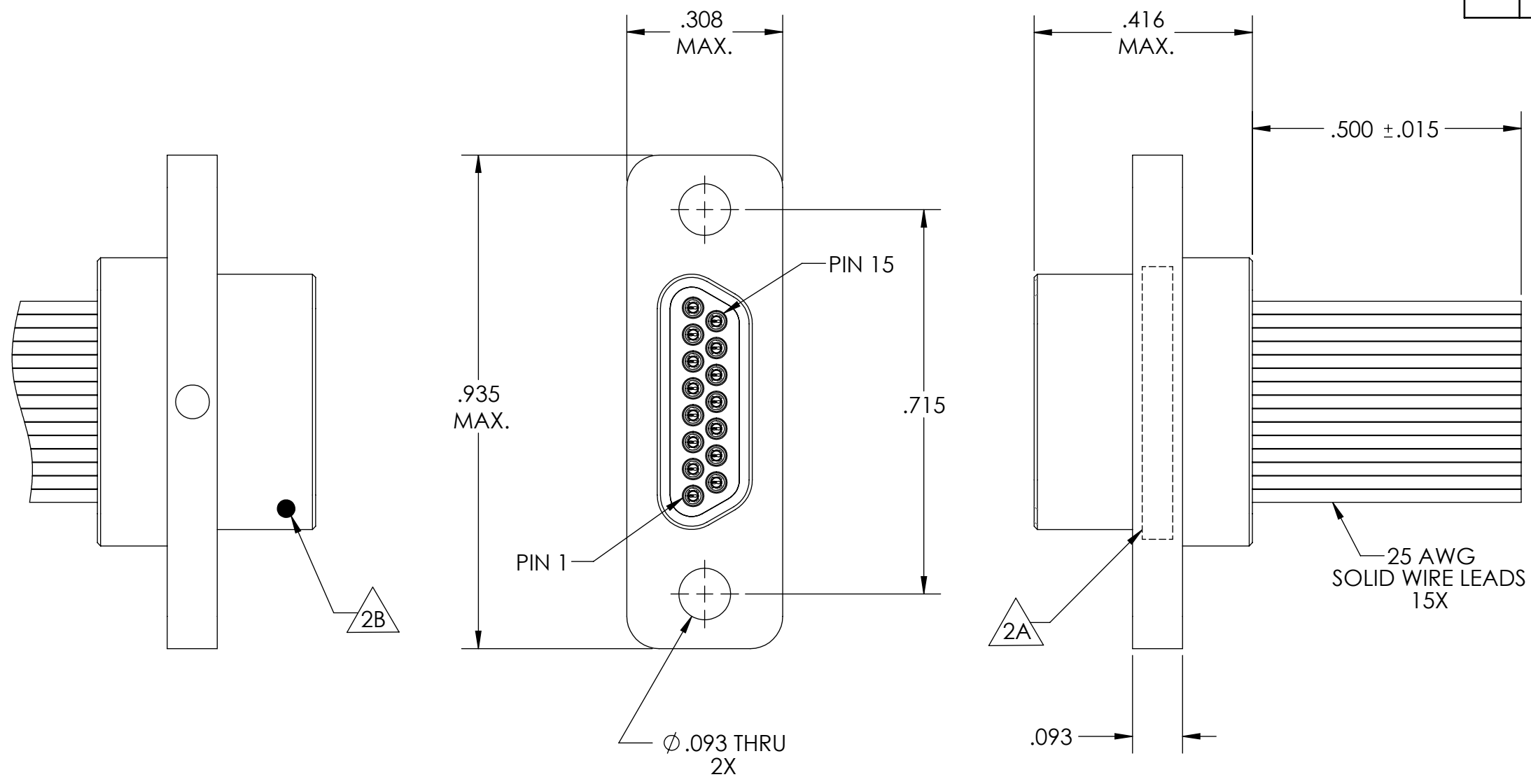


PART REV		DWG ISSUE	DATE	ECN NO.	APPVD BY	REL BY
-	-	-	5/26/15	UMI5622	DW	DW

F  
E  
D  
C  
B  
A



4. PERFORMANCE SPECIFICATIONS: MEETS OR EXCEEDS REQUIREMENTS OF MIL-DTL-83513

3 MATERIALS:  
 SHELL: 6061-T6 ALUMINUM PER AMS-QQ-A200/8, NICKEL PLATED PER AMS-2404  
 INSULATOR: PPS PER MIL-M-24519 GST-40F, COLOR: BLACK  
 PIN CONTACT: C17200 BERYLLIUM COPPER PER ASTM B194, GOLD PLATED PER ASTM B488  
 25 AWG LEADS: 60/40 TIN/LEAD PLATED COPPER ALLOY

2. MARKING: 2A "UMI", DATE CODE, M83513/03-B07N.  
 2B A DOT INDICATING POSITION 1.

1. CONNECTOR ASSEMBLY IS IAW MIL-DTL-83513 UNLESS OTHERWISE SPECIFIED.

NOTES: UNLESS OTHERWISE SPECIFIED.

QUALITY SYMBOLS CRITICAL MAJOR NO SYMBOLS = MINOR DIMENSIONS	UNLESS OTHERWISE SPECIFIED: ALL DIMENSIONS ARE IN INCHES	SCALE 4 : 1	DWG SIZE B	THIRD ANGLE PROJECTION	REVISE ON CAD ONLY		
	GENERAL TOLERANCES: 3 PLACES ±.005 2 PLACES ±.01 ANGULAR ±2°	DRAWN BY & DATE DU 5/26/15	TITLE: MIL-SPEC MICRO-D CONNECTOR, PLUG (PINS), SIZE 15, W/0.50 25 AWG LEADS, MIL-DTL-83513/03-B07N		MATERIAL: 3	ENG PROJECT #: NONE	
	ULTI-MATE CAGE CODE 58967	CHECKED BY & DATE DW 5/26/15	PART NO. 835121070		DRAWING NO. SD-835121070	SHEET NO. 1 of 1	
		APPROVED BY & DATE DW 5/26/15	CAD FILE NAME SD-835121070.SLDDRW		PART REV. -		
	THIS DRAWING CONTAINS INFORMATION THAT IS PROPRIETARY TO ULTI-MATE INCORPORATED AND SHOULD NOT BE USED WITHOUT WRITTEN PERMISSION.						