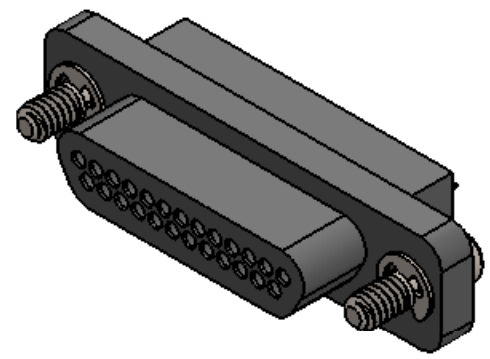
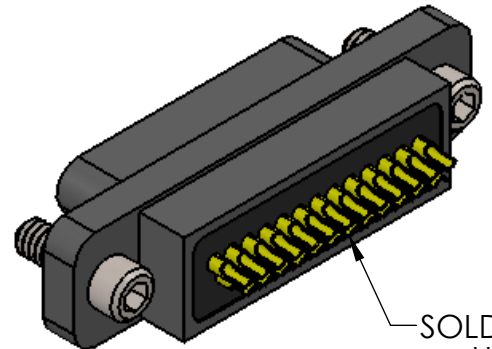


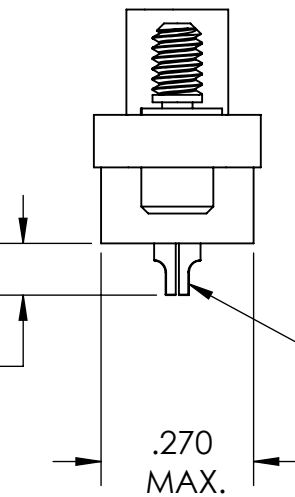
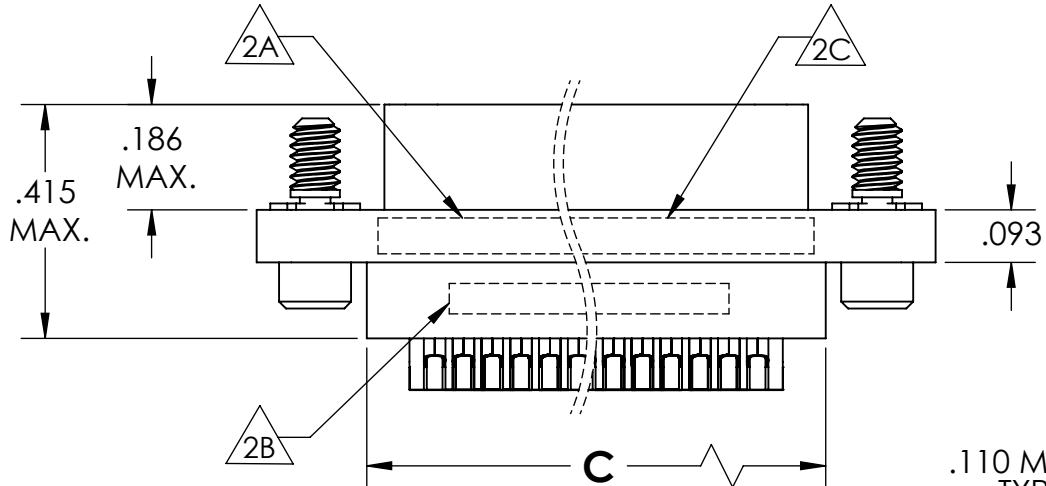
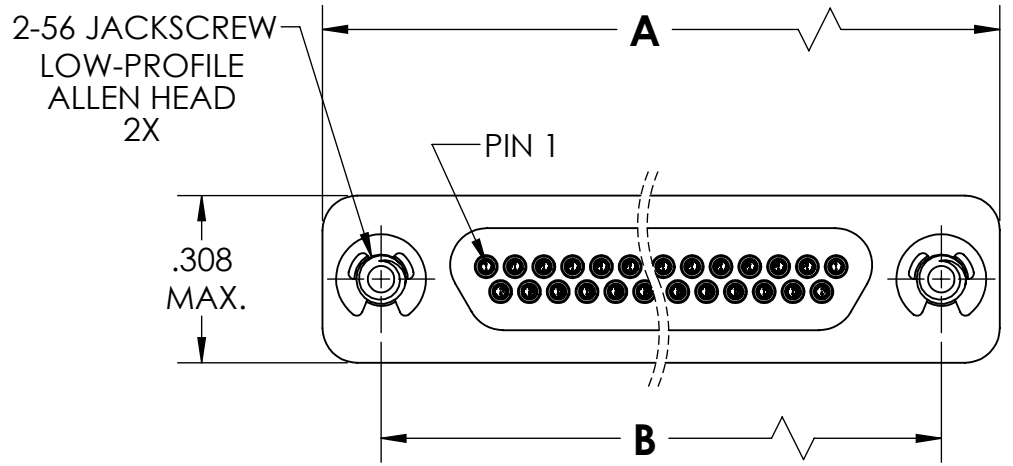
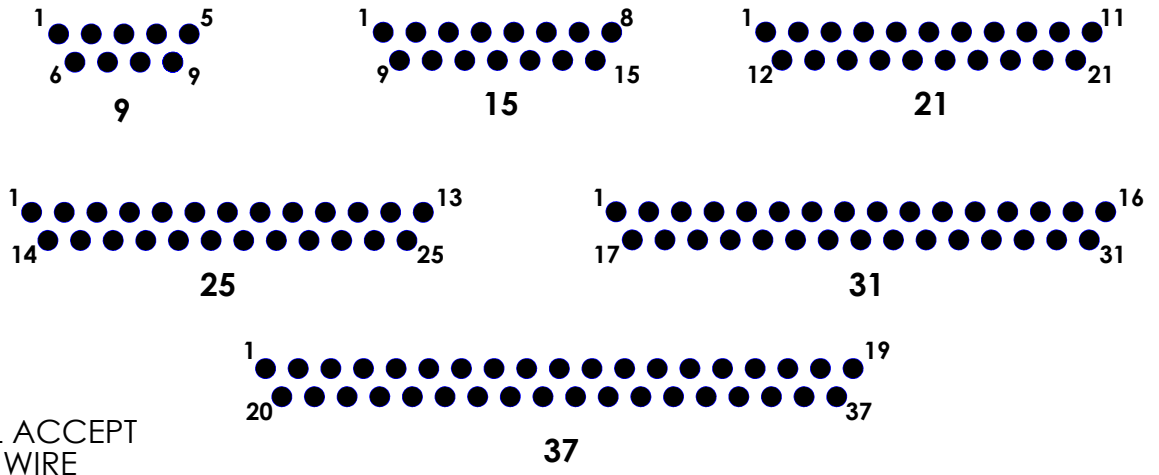
PART REV	DWG ISSUE	DATE	ECN NO.	APPVD BY	REL BY
-	-	11/7/16	UMI6137	DW	DW



SIZE 25 SHOWN



SOLDER CUPS WILL ACCEPT UP TO 24 AWG WIRE



SOLDER CUPS ARE ORIENTATED AS SHOWN

PART NUMBER	SIZE	A MAX.	B	C MAX.
834718002	9	.785	.565	.400
834728002	15	.935	.715	.550
834738002	21	1.085	.865	.700
834748002	25	1.185	.965	.800
834758002	31	1.335	1.115	.950
834768002	37	1.485	1.265	1.100

4. PERFORMANCE SPECIFICATIONS:
 CURRENT RATING: 3 AMPS MAX.
 DWV: 600 VAC
 TEMPERATURE RATING: 125° C

3 MATERIALS:
 SHELL: PPS PER MIL-M-24519 GST-40F, COLOR: BLACK
 PIN CONTACTS: C17200 BERYLLIUM COPPER ALLOY PER ASTM B194, GOLD PLATED PER ASTM B488
 HARDWARE: PASSIVATED STAINLESS STEEL IAW MIL-DTL-83513/5

2. MARKING:
 FOR SIZES 9 & 15: $\triangle 2A$ "UMI", DATE CODE, UMI PART NUMBER
 $\triangle 2B$ UMI WORK ORDER NUMBER
 FOR SIZES 21 THRU 37: $\triangle 2C$ "UMI", DATE CODE, UMI PART NUMBER, UMI WORK ORDER NUMBER

1. CONNECTOR ASSEMBLY IS IAW MIL-DTL-83513 UNLESS OTHERWISE SPECIFIED.

NOTES: UNLESS OTHERWISE SPECIFIED.

QUALITY SYMBOLS CRITICAL $\triangle C$ MAJOR \blacktriangledown NO SYMBOLS = MINOR DIMENSIONS	UNLESS OTHERWISE SPECIFIED: ALL DIMENSIONS ARE IN INCHES GENERAL TOLERANCES: 3 PLACES $\pm .005$ 2 PLACES $\pm .01$ ANGULAR $\pm 2^\circ$	SCALE: 3:1 DWG SIZE: B	THIRD ANGLE PROJECTION	REVISE ON CAD ONLY		
	ULTI-MATE CAGE CODE 58967	DRAWN BY & DATE: DU 11/7/16	TITLE: MICRO-D SOLDER CUP CONNECTORS, BRXXN02, PLUG, SIZES 9 THRU 37, 2-56 JACKSCREWS, SOLDER CUPS ACCEPTS 24 AWG WIRE			
		CHECKED BY & DATE: DW 11/7/16	MATERIAL: $\triangle 3$	ENG PROJECT #: NONE		
		APPROVED BY & DATE: DW 11/7/16	CAD FILE NAME: SD-834718002.SLDDRW	PART NO.: SEE TABLE I	DRAWING NO.: SD-834718002	SHEET NO.: 1 of 1
THIS DRAWING CONTAINS INFORMATION THAT IS PROPRIETARY TO ULTI-MATE INCORPORATED AND SHOULD NOT BE USED WITHOUT WRITTEN PERMISSION.						