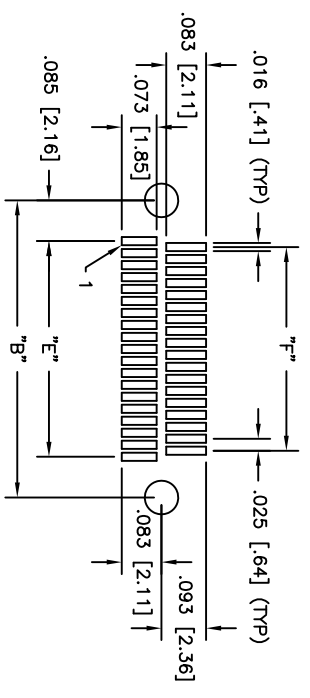
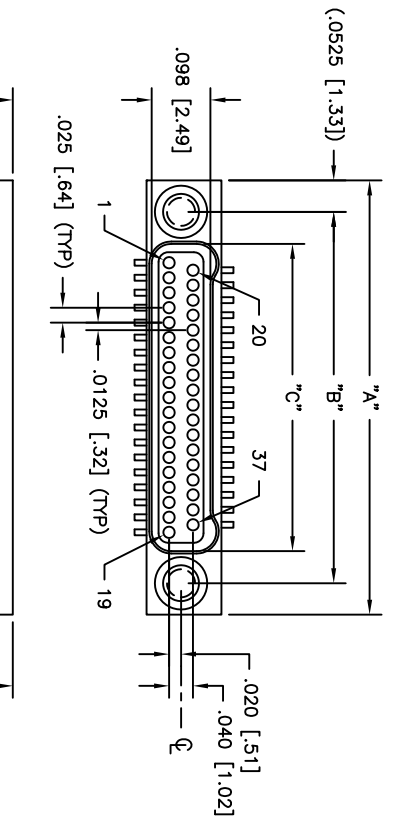
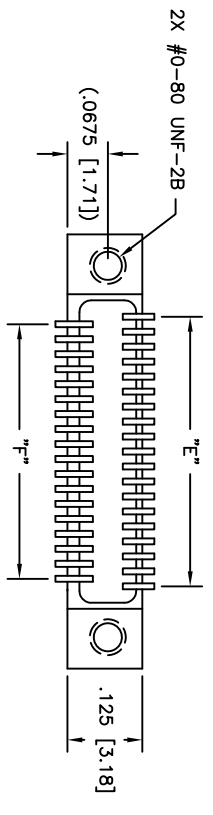
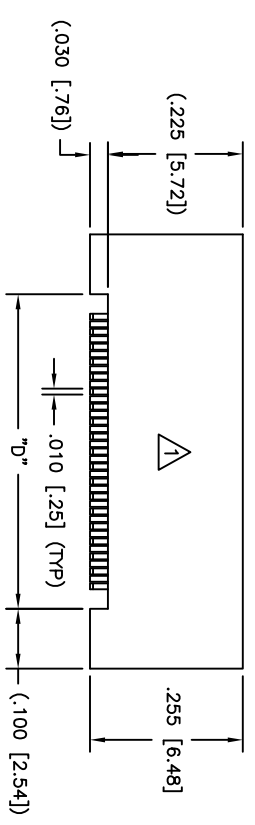


PART DWG	DATE	ECN NO.	APPD BY	REL BY
REV	ISSUE	UMI8974	TPOMBART	PER
-	12/11/18			



RECOMMENDED PC BOARD LAYOUT
(COMPONENT SIDE)
SCALE 4:1



PART NO.	SIZE	"A"	"B"	"C"	"D"	"E"	"F"
832416317	9	.375 [9.52]	.270 [6.86]	.163 [4.06]	.175 [4.44]	.100 [2.54]	.075 [1.90]
832426317	15	.450 [11.43]	.345 [8.76]	.238 [5.97]	.250 [6.35]	.175 [4.44]	.150 [3.81]
832436317	21	.525 [13.33]	.420 [10.67]	.313 [7.87]	.325 [8.25]	.250 [6.35]	.225 [5.71]
832446317	25	.575 [14.60]	.470 [11.94]	.363 [9.14]	.375 [9.52]	.300 [7.62]	.275 [6.98]
832456317	31	.650 [16.51]	.545 [13.84]	.438 [11.05]	.450 [11.43]	.375 [9.52]	.350 [8.89]
832466317	37	.725 [18.41]	.620 [15.75]	.513 [12.95]	.525 [13.33]	.450 [11.43]	.425 [10.79]
832476317	51	.900 [22.86]	.795 [20.19]	.688 [17.40]	.700 [17.78]	.625 [15.87]	.600 [15.24]
832486317	65	1.075 [27.30]	.970 [24.64]	.863 [21.84]	.875 [22.22]	.800 [20.32]	.775 [19.68]

- 4. LEAD TOLERANCE: LOWEST PIN OF EITHER ROW TO BE WITHIN ±.004 FROM SURFACE "X"
CO-PLANARITY BETWEEN LEADS TO BE WITHIN .005 MAX
- 3. PERFORMANCE: MEETS OR EXCEEDS M32139 PERFORMANCE SPECIFICATIONS
CONTACT RATING: 1 AMPERE MAXIMUM
DMV: 250 VAC
INSULATION RESISTANCE: 5000 MEGOHMS MINIMUM @ 100 VDC
CONTACT RESISTANCE: 0.021 VOLT MAXIMUM DROP @ 1.0 AMPS (.021 OHMS)
- 2. MATERIALS: SHELL: 300 SERIES STAINLESS STEEL, PASSIVATED PER AMS2700
INSULATOR: LCP (LIQUID CRYSTAL POLYMER) GLCP-30F
CONTACT: BERYLLIUM COPPER PER ASTM B194, GOLD PLATED PER ASTM B488
LEADS: SN/PB PLATED
- 1. MARKINGS: UMI, UMI P/N, DATE CODE & W/O NO. AS SPACE PERMITS OTHERWISE ON BAG OR TAG

QUALITY MAJOR CRITICAL S =	UNLESS SPECIFIED: ALL DIMENSIONS IN INCHES GENERAL TOLERANCES: 3 PLACE ±.005 2 PLACE ±.010 ANGULAR ±2°	SCALE 5:1	DWG SIZE B	THIRD ANGLE PROJECTION	REVISE ON CAD ONLY
SPC SYMBOLS	Utit-Mate CASE CODE 58967	DRAWN BY & DATE PER 12-05-18	TITLE NANO-D DUAL ROW CONNECTOR FEMALE, SIZE XX, CNM26LXX-2S071-S09	CAD FILENAME SD-832466317.DWG	PART NO. SD-832466317
		CHECKED BY & DATE SEE ECN	MATERIAL Utit-Mate Connector Inc.	THIS DRAWING CONTAINS INFORMATION THAT IS PROPRIETARY TO ULTI-MATE INCORPORATED AND SHOULD NOT BE USED WITHOUT WRITTEN PERMISSION	DRAWING NO. SD-832466317
		APPROVED BY & DATE SEE ECN			SHEET NO. 1 OF 1
					PART REV -