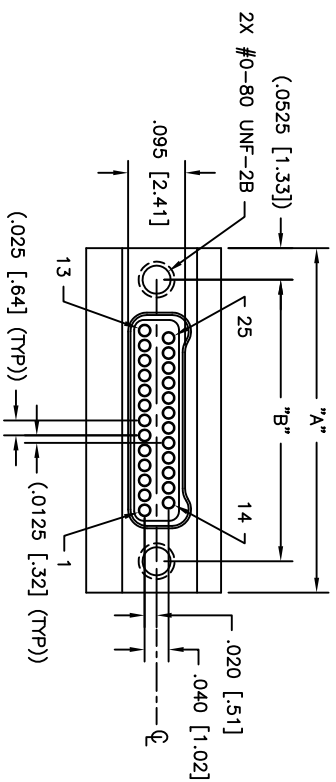
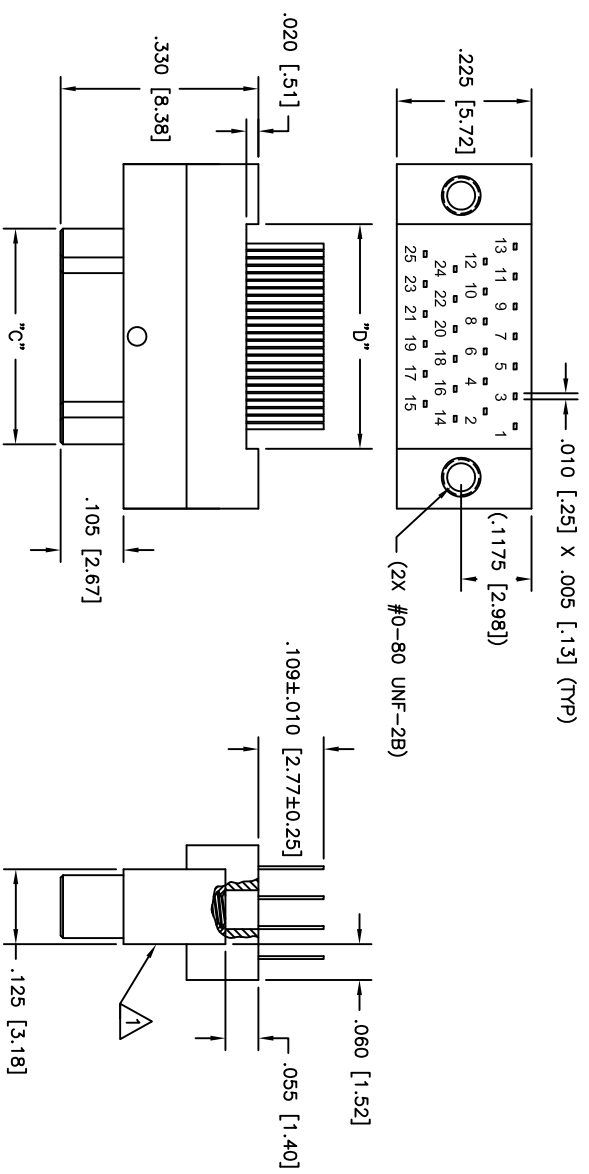


| PART/DWG<br>REV<br>ISSUE | DATE     | ECN NO. | APP'D BY  | REL BY |
|--------------------------|----------|---------|-----------|--------|
| -                        | 01/27/14 | UM15219 | T.POMBART | PER    |
| A                        | 07/28/15 | UM15780 | T.POMBART | PER    |



3. PERFORMANCE: MEETS OR EXCEEDS M32139 PERFORMANCE SPECIFICATIONS

CONTACT RATING: 1 AMPERE MAXIMUM  
 CONTACT RESISTANCE: 5000 MEGOHMS MINIMUM @ 100 VDC  
 INSULATION RESISTANCE: 250 VAC  
 CONTACT RESISTANCE: 0.021 VOLT MAXIMUM DROP @ 1.0 AMPS (.021 OHMS)

2. MATERIALS: SHELL AND INSULATOR: LCP (LIQUID CRYSTAL POLYMER) GLCP-30F  
 CONTACT: BERYLLIUM COPPER PER ASTM B194, GOLD PLATED PER ASTM B488  
 BACKSHELL: PPS PER MIL-M-24519 GST-40F  
 LEADS: Sn/Pb PLATED

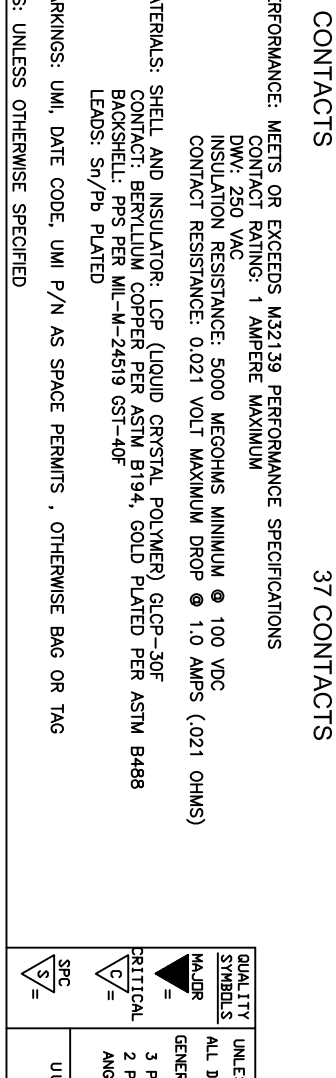
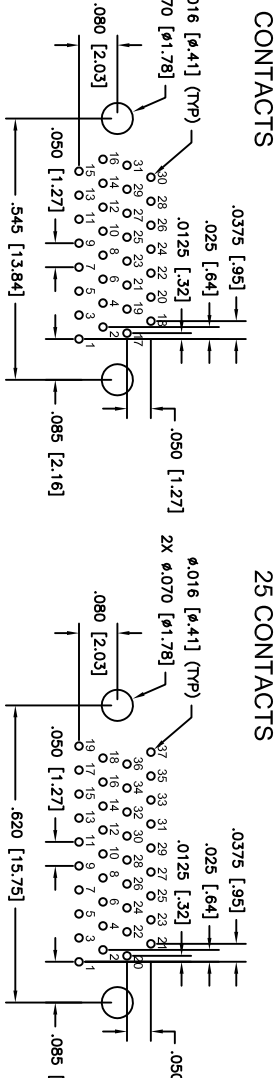
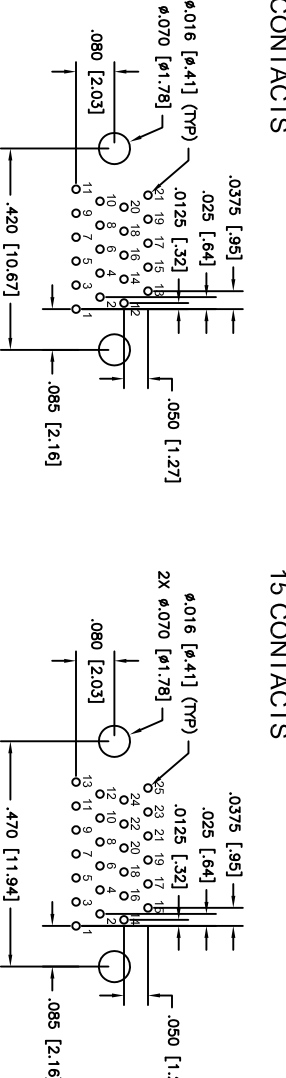
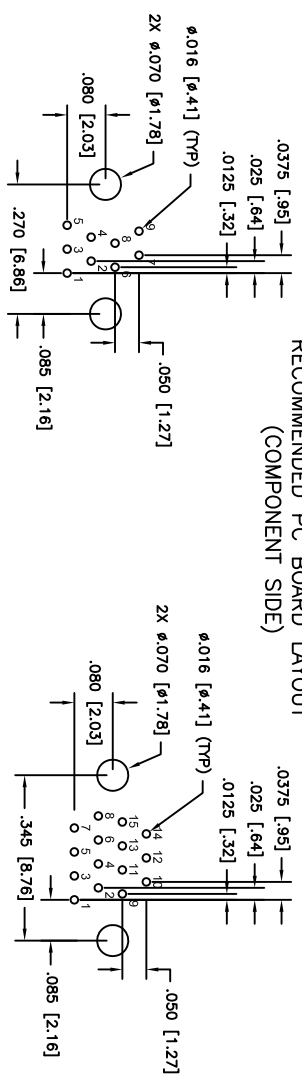
1. MARKINGS: UMI, DATE CODE, UMI P/N AS SPACE PERMITS, OTHERWISE BAG OR TAG  
 NOTES: UNLESS OTHERWISE SPECIFIED

| PART NO.  | SIZE | "A"           | "B"          | "C"          | "D"          |
|-----------|------|---------------|--------------|--------------|--------------|
| 832318617 | 9    | .375 [9.52]   | .270 [6.86]  | .160 [4.06]  | .175 [4.44]  |
| 832328617 | 15   | .450 [11.43]  | .345 [8.76]  | .235 [5.97]  | .250 [6.35]  |
| 832338617 | 21   | .525 [13.33]  | .420 [10.67] | .310 [7.87]  | .325 [8.25]  |
| 832348617 | 25   | .575 [14.60]  | .470 [11.94] | .360 [9.14]  | .375 [9.52]  |
| 832358617 | 31   | .650 [16.51]  | .545 [13.84] | .435 [11.05] | .450 [11.43] |
| 832368617 | 37   | .725 [18.41]  | .620 [15.75] | .510 [12.95] | .525 [13.33] |
| 832378617 | 51   | .900 [22.86]  | .795 [20.19] | .685 [17.40] | .700 [17.78] |
| 832388617 | 65   | 1.075 [27.30] | .970 [24.64] | .860 [21.84] | .875 [22.22] |

|                 |  |  |                  |                        |                                    |
|-----------------|--|--|------------------|------------------------|------------------------------------|
| QUALITY SYMBOLS | UNLESS SPECIFIED, ALL DIMENSIONS IN INCHES | SCALE  | DWG SIZE         | THIRD ANGLE PROJECTION | REVISE ON CAD ONLY                 |
| MAJOR =         | GENERAL TOLERANCES:                        | 5:1  | B                |                        |                                    |
| CRITICAL =      | 3 PLACE ±.005                              | DRAWN BY & DATE  | 03-09-10         | TITLE                  | NANO-D DUAL ROW, PLASTIC CONNECTOR |
| S =             | 2 PLACE ±.010                              | CHECKED BY & DATE  |                  | MATERIAL               | MALE, SIZE XX, CNP6LXX2P071        |
|                 | ANGULAR ±2°                                | APPROVED BY & DATE   |                  |                        |                                    |
|                 |  | SEE ECN  |                  |                        |                                    |
|                 |  | CAD FILENAME   | SD-832368617.DWG | PART NO.               | SD-832368617                       |
|                 |  | Uti+MATE CAGE CODE   | 58967            | DRAWING NO.            |                                    |
|                 |  | THIS DRAWING CONTAINS INFORMATION THAT IS PROPRIETARY TO UTI+MATE INCORPORATED AND SHOULD NOT BE USED WITHOUT WRITTEN PERMISSION |                  |                        |                                    |
|                 |  |  |                  | SHEET NO.              | 1 OF 1                             |
|                 |  |  |                  | REV                    | A                                  |

| PART | DWG   | DATE     | ECN NO. | APPROV BY | REL BY |
|------|-------|----------|---------|-----------|--------|
| REV  | ISSUE |          |         | T.POMBAKT | PER    |
| A    |       | 01/27/14 | UM5219  |           |        |
| A    |       | 07/28/15 | UM5780  | T.POMBAKT | PER    |

RECOMMENDED PC BOARD LAYOUT  
(COMPONENT SIDE)



|                 |  |  |                 |                        |                    |
|-----------------|--|--|-----------------|------------------------|--------------------|
| QUALITY SYMBOLS | UNLESS SPECIFIED, ALL DIMENSIONS IN INCHES | SCALE  | DWG SIZE        | THIRD ANGLE PROJECTION | REVISE ON CAD ONLY |
| MAJOR           | GENERAL TOLERANCES:                        | 5:1  | B               |                        |                    |
| CRITICAL        | 3 PLACE ±.005                              | DRAWN BY & DATE  |                 |                        |                    |
|                 | 2 PLACE ±.010                              | UMI  | 03-09-10        |                        |                    |
|                 | ANGULAR ±2°                                | CHECKED BY & DATE  |                 |                        |                    |
|                 |  | SEE ECN  |                 |                        |                    |
|                 |  | APPROVED BY & DATE   |                 |                        |                    |
|                 |  | SEE ECN  |                 |                        |                    |
| SPC             | UT11-Mate                                  | CAD FILENAME   | PART NO.        | DRAWING NO.            | SHEET NO.          |
|                 | 58967                                      | SD-832368617.DWG   | SEE "TAB BLOCK" | SD-832368617           | 2 OF 2             |
|                 |  | THIS DRAWING CONTAINS INFORMATION THAT IS PROPRIETARY TO ULTI-MATE INCORPORATED AND SHOULD NOT BE USED WITHOUT WRITTEN PERMISSION. |                 |                        | REV A              |

3. PERFORMANCE: MEETS OR EXCEEDS M32139 PERFORMANCE SPECIFICATIONS  
 CONTACT RATING: 1 AMPERE MAXIMUM  
 DWV: 250 VAC  
 INSULATION RESISTANCE: 5000 MEGOHMS MINIMUM @ 100 VDC  
 CONTACT RESISTANCE: 0.021 VOLT MAXIMUM DROP @ 1.0 AMPS (.021 OHMS)

2. MATERIALS: SHELL AND INSULATOR: LCP (LIQUID CRYSTAL POLYMER) GLCP-30F  
 CONTACT: BERYLLIUM COPPER PER ASTM B194, GOLD PLATED PER ASTM B488  
 BACKSHELL: PPS PER MIL-M-24519 GST-40F  
 LEADS: Sn/Pb PLATED

1. MARKINGS: UMI, DATE CODE, UMI P/N AS SPACE PERMITS, OTHERWISE BAG OR TAG  
 NOTES: UNLESS OTHERWISE SPECIFIED