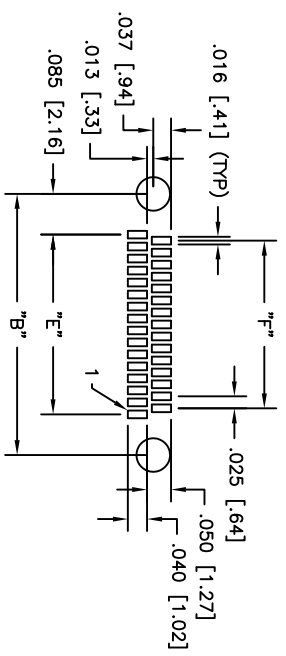
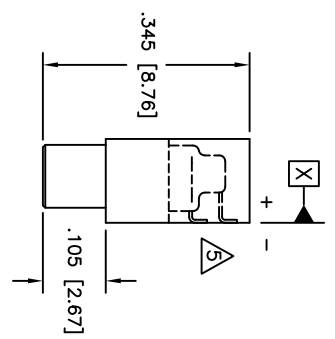
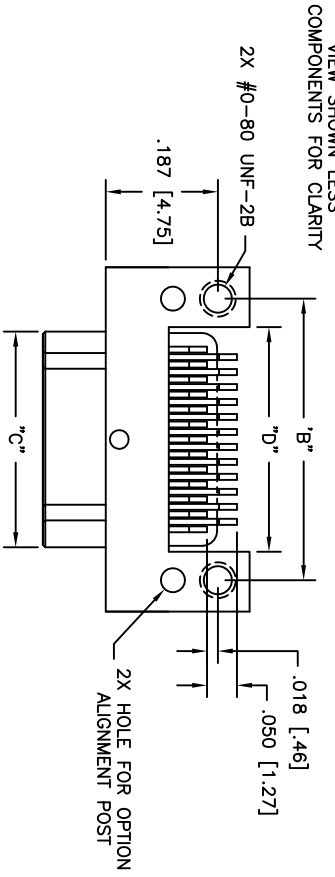
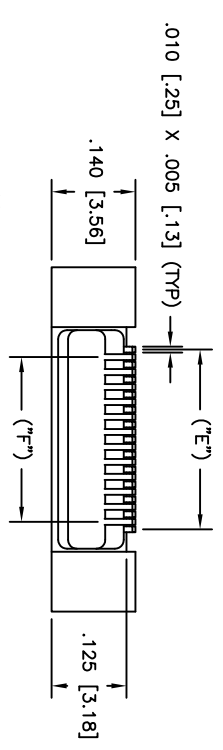
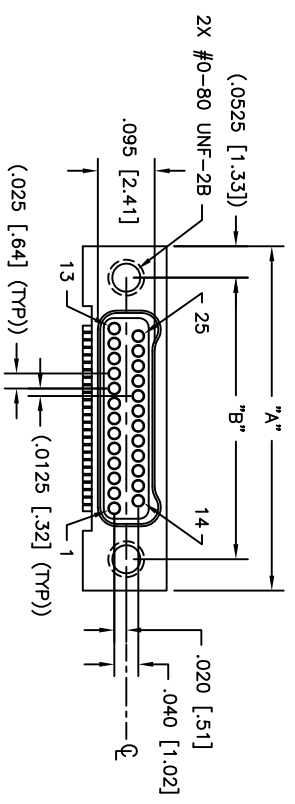


REV	DWG ISSUE	DATE	ECN NO.	APPD BY	REL BY
A	A	11/13/16	UM16143	T.POMBART	PER
B	B	10/19/20	UM17580	T.POMBART	PER



RECOMMENDED PCB BOARD LAYOUT  
(COMPONENT SIDE)  
SCALE 4:1



PART NO.	SIZE	"A"	"B"	"C"	"D"	"E"	"F"
832313217	9	.375 [9.52]	.270 [6.86]	.160 [4.06]	.175 [4.44]	.100 [2.54]	.075 [1.90]
832323217	15	.450 [11.43]	.345 [8.76]	.235 [5.97]	.250 [6.35]	.175 [4.44]	.150 [3.81]
832333217	21	.525 [13.33]	.420 [10.67]	.310 [7.87]	.325 [8.25]	.250 [6.35]	.225 [5.71]
832343217	25	.575 [14.60]	.470 [11.94]	.360 [9.14]	.375 [9.52]	.300 [7.62]	.275 [6.98]
832353217	31	.650 [16.51]	.545 [13.84]	.435 [11.05]	.450 [11.43]	.375 [9.52]	.350 [8.89]
832363217	37	.725 [18.41]	.620 [15.75]	.510 [12.95]	.525 [13.33]	.450 [11.43]	.425 [10.79]
832373217	51	.900 [22.86]	.795 [20.19]	.685 [17.40]	.700 [17.78]	.625 [15.87]	.600 [15.24]
832383217	65	1.075 [27.30]	.970 [24.64]	.860 [21.84]	.875 [22.22]	.800 [20.32]	.775 [19.68]

- LEAD TOLERANCE: LEADS TO BE CO-PLANAR WITHIN +.003/-0.001 FROM SURFACE "X"
- PERFORMANCE: MANUFACTURED TO THE FOLLOWING M32139 PERFORMANCE SPECIFICATIONS  
CONTRACT RATING: 1 AMPERE MAXIMUM AT AMBIENT TEMPERATURE  
DWV: 250 VAC  
INSULATION RESISTANCE: 5000 MEGOHMS MINIMUM @ 100 VDC  
CONTACT RESISTANCE: 0.021 VOLT MAXIMUM DROP @ 1.0 AMPS (.021 OHMS)
- INTERMATEABILITY: INTERFACE DIMENSIONS PER MIL-DTL-32139
- MATERIALS: SHELL: ALUMINUM 6061-T6, ANODIZE PER MIL-A-8825, TYPE III, CLASS 2, BLACK  
INSULATOR: LCP (LIQUID CRYSTAL POLYMER) GLOP-30F  
CONTACT: BERYLLIUM COPPER PER ASTM B194, GOLD PLATED PER ASTM B488  
LEADS: SN/PB PLATED
- MARKINGS: UMI, UMI P/N, DATE CODE & W/O NO. AS SPACE PERMITS OTHERWISE ON BAG OR TAG

QUALITY UNLESS SPECIFIED: ALL DIMENSIONS IN INCHES

MAJOR GENERAL TOLERANCES:  
3 PLACE ±.005  
2 PLACE ±.010  
ANGULAR ±.2°

CRITICAL

SPC

Uti+ - Mate CASE CODE 58967

SCALE 5:1

DRAWN BY & DATE UMI 03-09-10

CHECKED BY & DATE SEE ECN

APPROVED BY & DATE SEE ECN

CAD FILENAME SD-832343217.DWG

PART NO. SD-832343217

TITLE NANO-D DUAL ROW CONNECTOR

MATERIAL MALE, SIZE XX, CMM28LXX-2P071-S03

DRAWING NO. SD-832343217

THIRD ANGLE PROJECTION

REVISE ON CAD ONLY

Uti+ - Mate Connector Inc.

SHEET NO. 1 OF 1

PART REV. A

NOTES: UNLESS OTHERWISE SPECIFIED