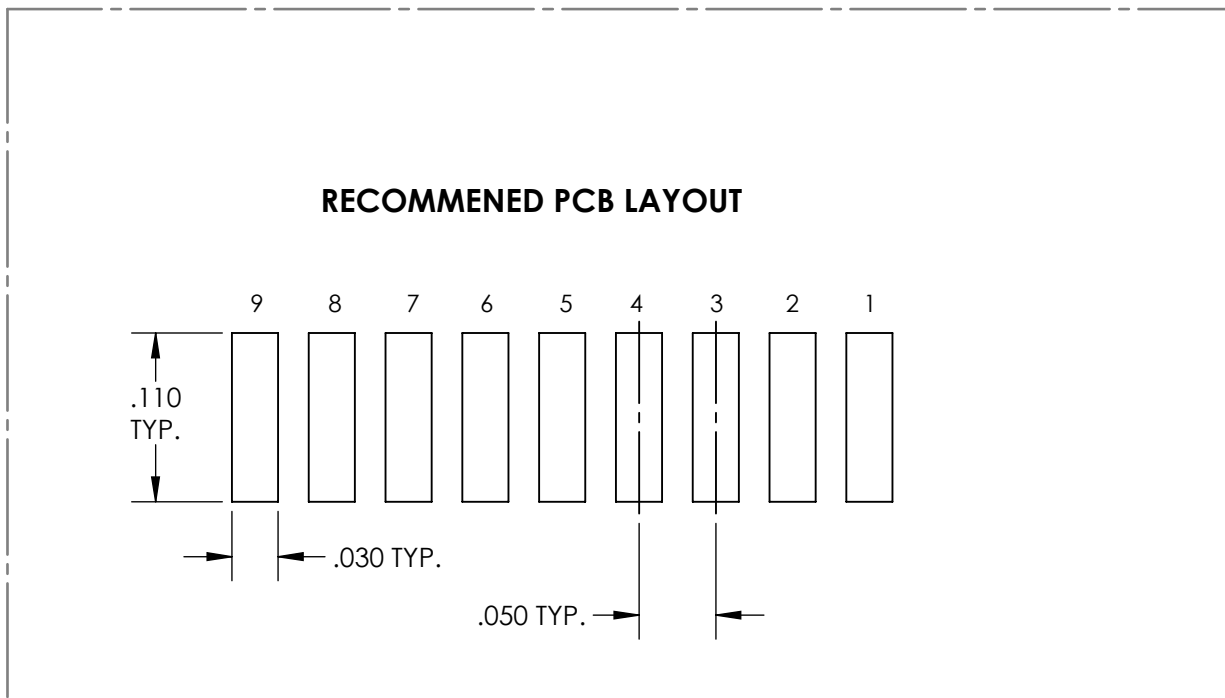
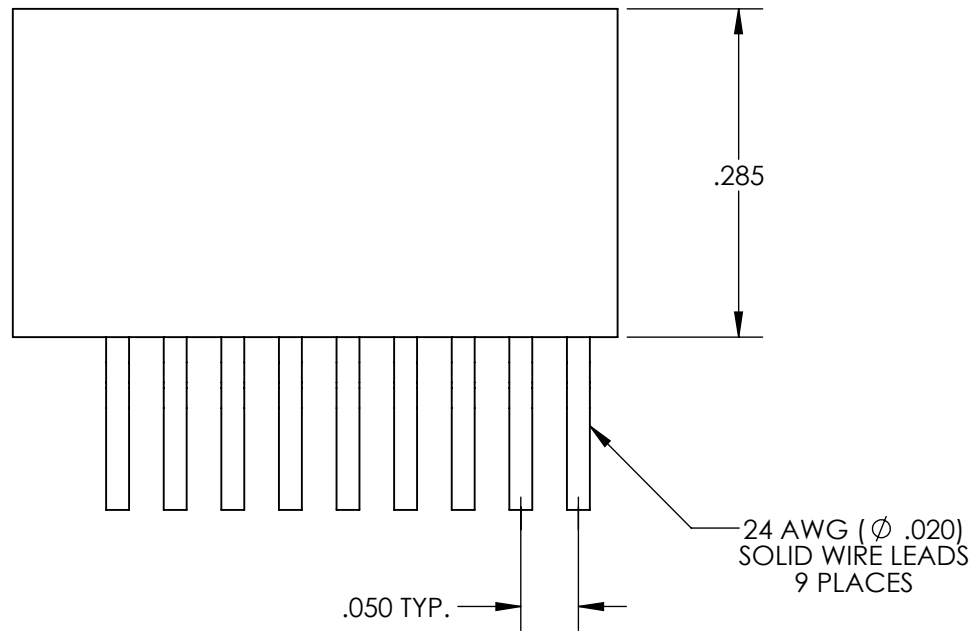
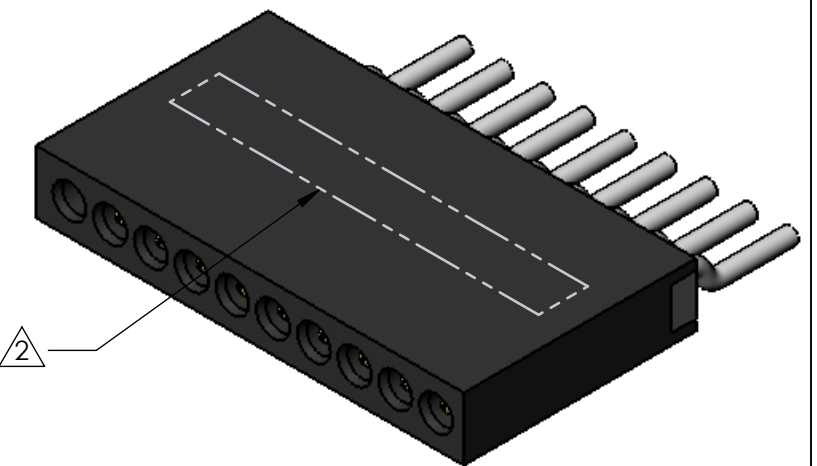
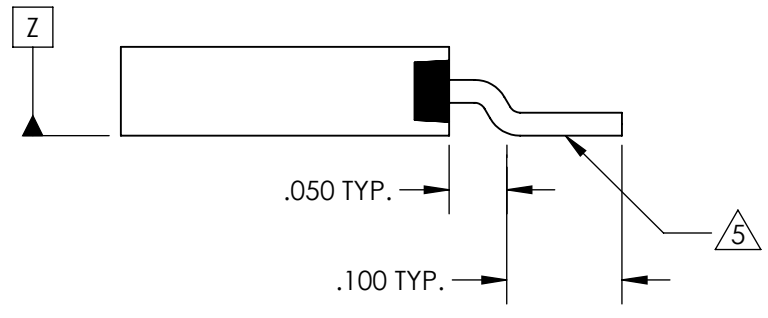
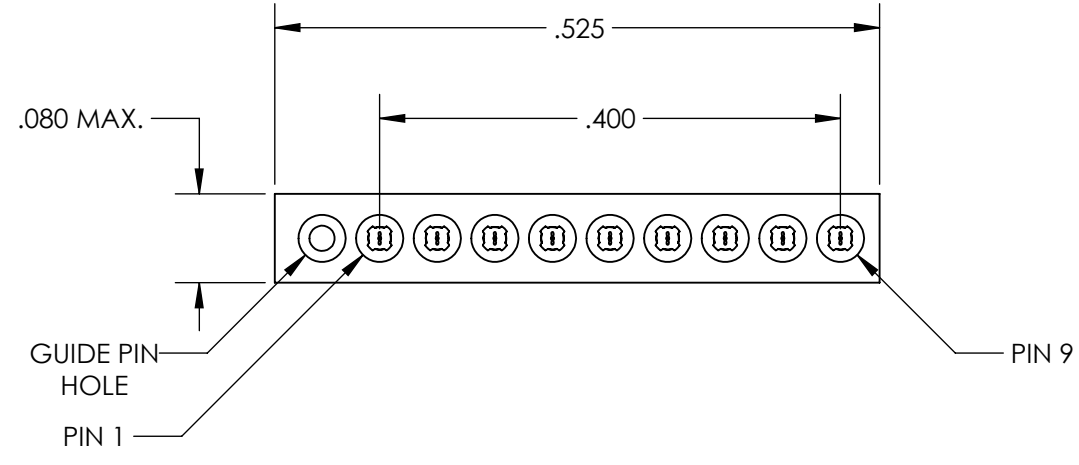


REVISIONS

PART REV.	DWG. ISSUE	DATE	ECN NO.	APPVD. BY	REL. BY
-	-	01/20/2014	UMI5207	DW	DW



5 LOWEST POINT OF PC LEADS TO BE WITHIN ± .005 FROM SURFACE 'Z'  
COPLANARITY OF LEADS TO BE WITHIN .005 FROM THAT LOWEST POINT.

4. PERFORMANCE SPECIFICATIONS:  
CURRENT RATING: 3A MAX.  
INSULATION RESISTANCE: 5000 MΩ MIN.  
DWV: 600 VAC  
TEMPERATURE RATING: 200°C

3 MATERIALS:  
INSULATOR: PPS PER MIL-M-24519 GST-40F, COLOR: BLK  
PIN CONTACTS: C17400 BERYLLIUM COPPER PER ASTM B888, GOLD PLATED PER ASTM B488  
24 AWG LEADS: TIN PLATED COPPER ALLOY PER A-A-59551 TYPE S

2 MARKINGS: UMI & DATE CODE, BAG & TAG W/UMI, UMI PART NO.  
1. CONNECTOR ASSEMBLY IS IAW MIL-DTL-83513 WHERE APPLICABLE

**NOTES: UNLESS OTHERWISE SPECIFIED**

QUALITY SYMBOLS CRITICAL MAJOR NO SYMBOL = MINOR DIMENSION	<b>UNLESS SPECIFIED:</b> ALL DIMENSIONS IN INCHES GENERAL TOLERANCES: 3 PLACE ±.005 2 PLACE ±.01 ANGULAR ±2° ALL EXTERNAL SPECIFICATIONS REFERENCED ON THIS DRAWING SHALL BE THE LATEST REVISION IN EFFECT Ulti-Mate CAGE CODE <b>58967</b>	SCALE <b>6:1</b>	DWG SIZE <b>B</b>	THIRD ANGLE PROJECTION	<b>REVISE ON CAD ONLY</b>	
	DRAWN BY & DATE JB 01/02/2014	TITLE MICRO-D STRIP CONNECTOR, SIZE 9 W/GUIDE PIN HOLE, L05 LEADS SR09P1-L05-HT		MATERIAL 3	ENG PROJECT # E151	
	CHECKED BY & DATE DW 1-6-14	APPROVED BY & DATE DW 1-6-14		PART NO. 437091902	DRAWING NO. SD-437091902	SHEET NO. <b>1 OF 1</b>
	CAD FILENAME SD-437091902.slddrw	THIS DRAWING CONTAINS INFORMATION THAT IS PROPRIETARY TO ULTI-MATE INCORPORATED AND SHOULD NOT BE USED WITHOUT WRITTEN PERMISSION.		PART REV. -	-	-