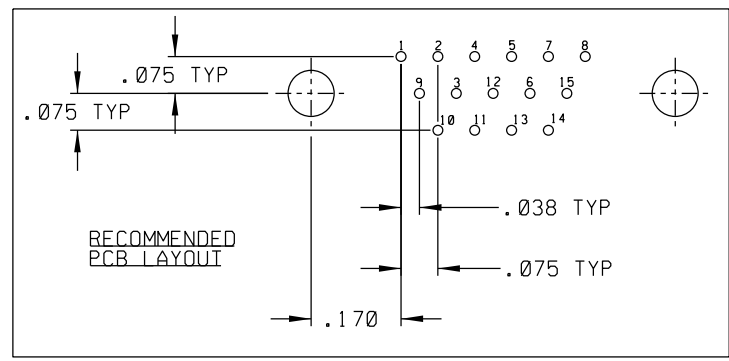
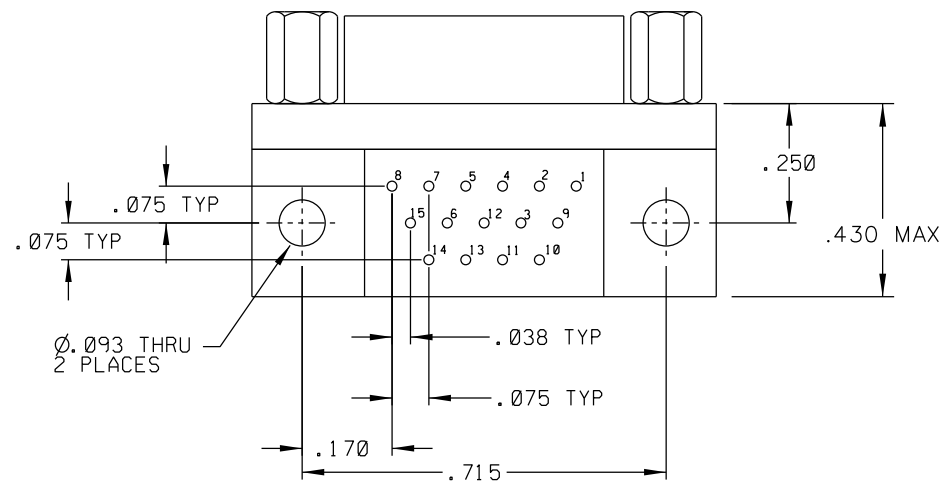
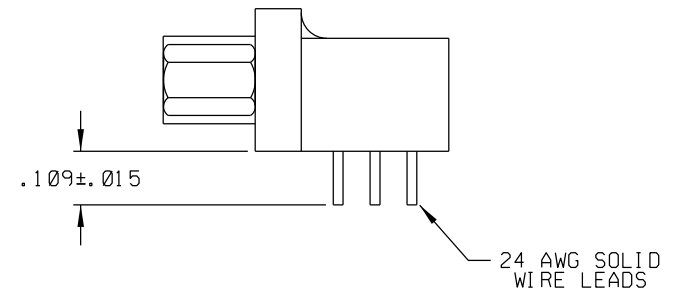
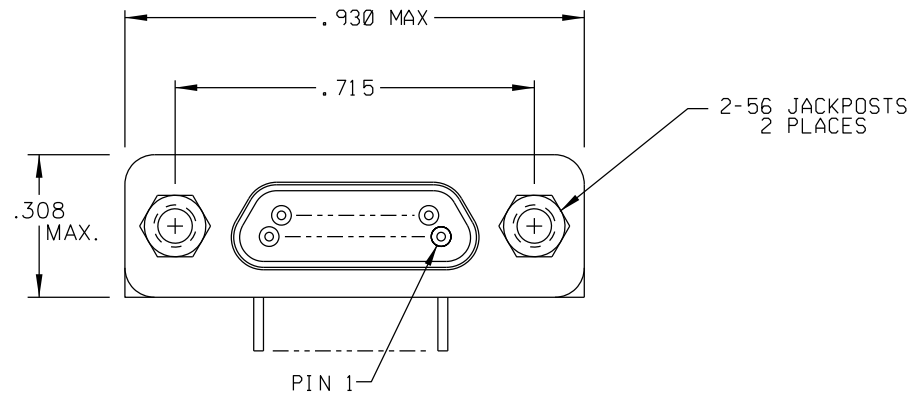


SD-4361 21 31 7

PART REV	DWG ISSUE	DATE	ECN NO.	APPVD BY	REL BY
-	-	8-28-12	UMI 4690	DW	DW
A	A	9-7-12	UMI 4704	DW	DW



- 4. TEMPERATURE RATING 200°C.
- 3. NUMBERS ON BACKSHELL ARE SHOWN FOR REFERENCE ONLY AND DO NOT APPEAR ON PART
- 2. MATERIALS:
 SHELL: 6061-T6 ALUMINUM PER SAE-AMS-QQ-A200/8, NICKEL PLATED PER AMS 2404.
 INSULATOR AND BACKSHELL: PPS PER MIL-M-24519 GST-40F.
 PIN CONTACTS: BERYLLIUM COPPER ALLOY, GOLD PLATED PER ASTM B488.
 24 AWG SOLID LEADS: TIN PLATED COPPER ALLOY PER A-A-59551, TYPE S.
 HARDWARE: PASSIVATED STAINLESS STEEL IAW MIL-DTL-83513/5.
- 1. MARKING: "UMI", DATE CODE, AND UMI PART NUMBER

NOTES: UNLESS OTHERWISE SPECIFIED

QUALITY SYMBOLS CRITICAL MAJOR NO SYMBOL - MINOR DIMENSION	UNLESS SPECIFIED: ALL DIMENSIONS IN INCHES	SCALE: NONE	DWG SIZE: B	THIRD ANGLE PROJECTION	REVISE ON CAD ONLY
	GENERAL TOLERANCES: 3 PLACE ± .002 2 PLACE ± .005 ANGULAR ± 2°	DRAWN BY & DATE DU 8-28-12	TITLE: CIRCUIT CONNECTOR, PLUG, STYLE 9 BACKSHELL, SIZE 15, CM9R15P07-S01 HIGH-TEMP		
	Utii-Mate CAGE CODE 58967	CHECKED BY & DATE SEE ECN	MATERIAL: 2		
		APPROVED BY & DATE SEE ECN	CAD FILENAME SD-4361 21 31 7. DGN	PART NO. 4361 21 31 7	DRAWING NO. SD-4361 21 31 7
THIS DRAWING CONTAINS INFORMATION THAT IS PROPRIETARY TO ULTI-MATE INCORPORATED AND SHOULD NOT BE USED WITHOUT WRITTEN PERMISSION.					
					PART REV A

