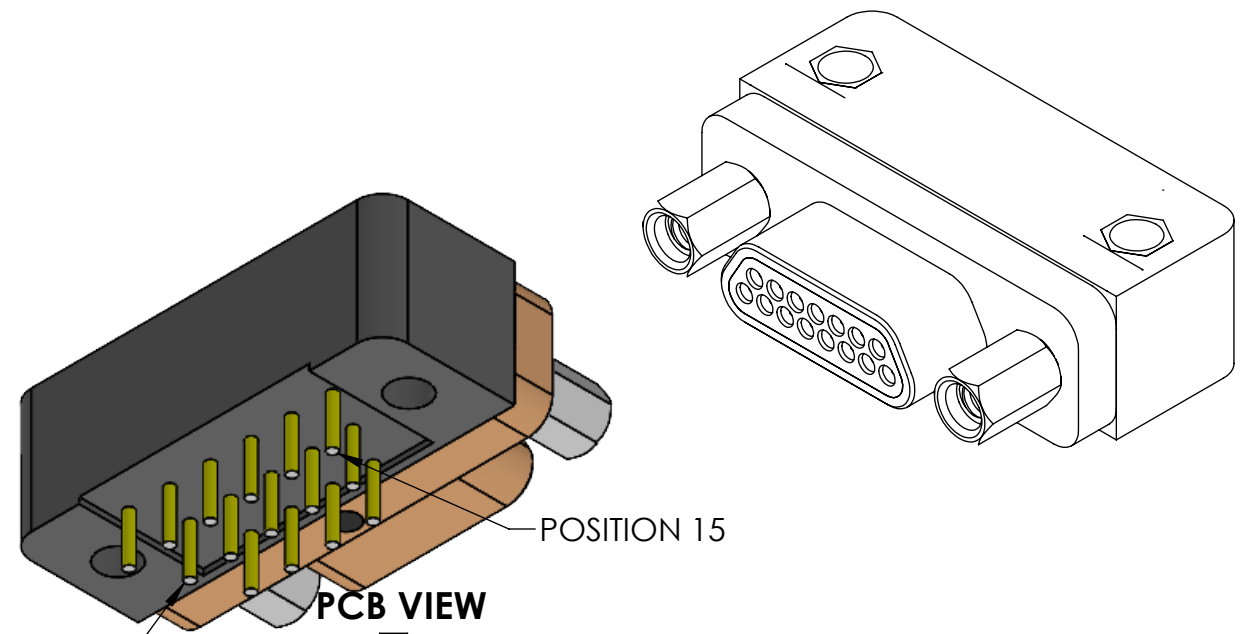
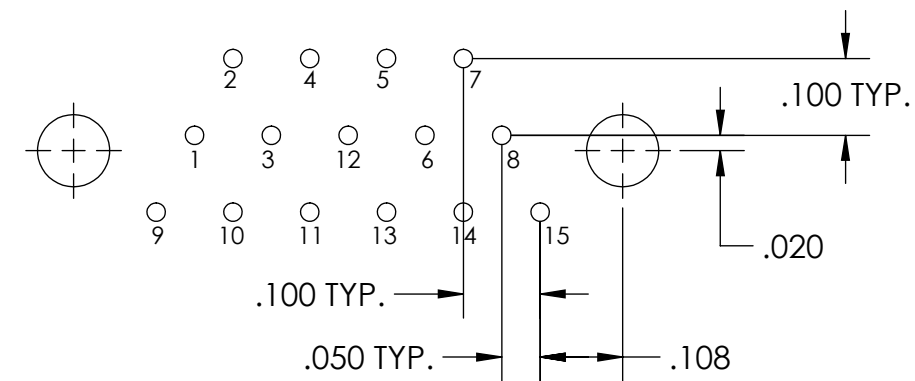


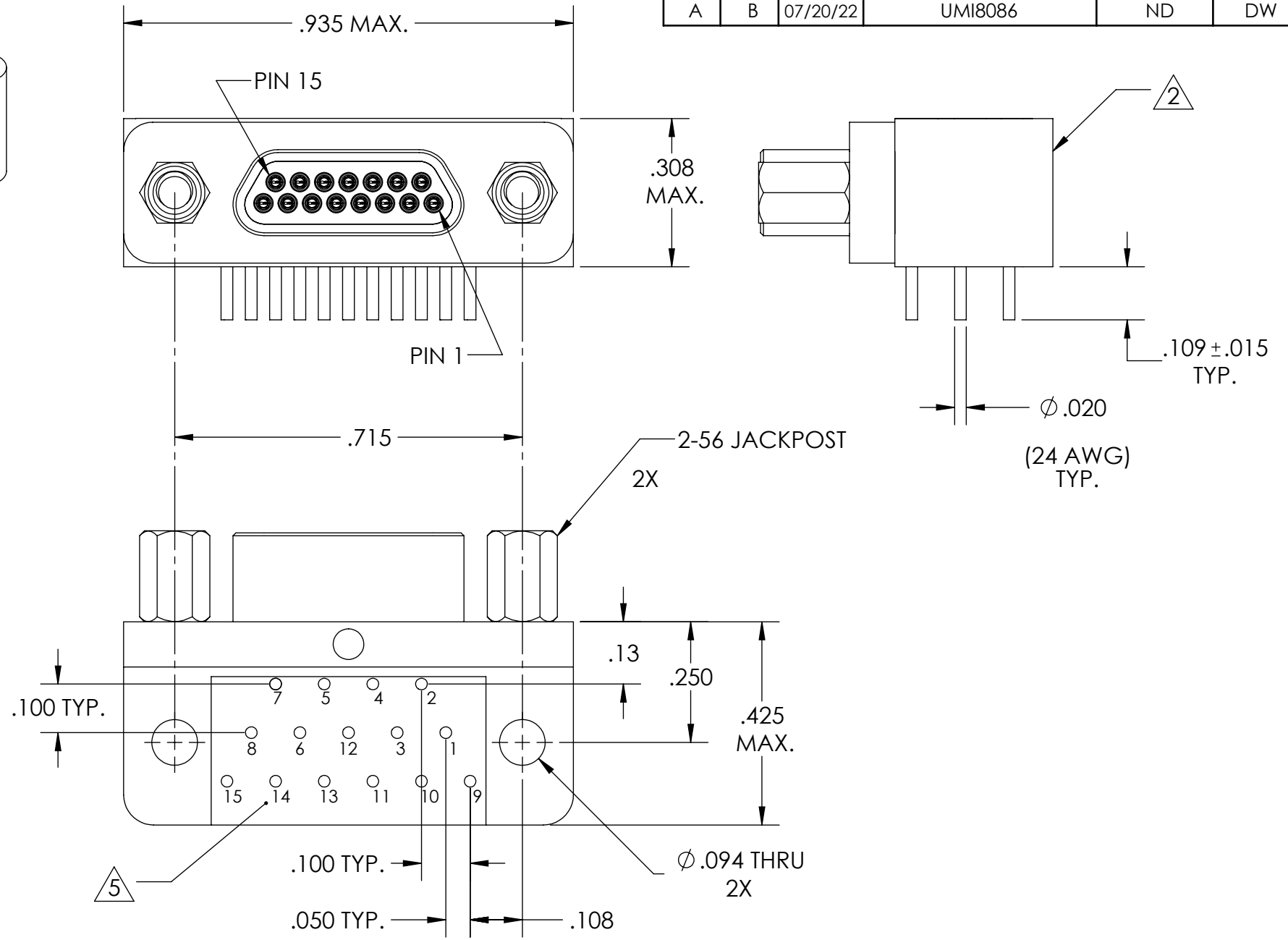
PART REV	DWG ISSUE	DATE	ECN NO.	APPVD BY	REL BY
-	-	5/20/14	UMI5320	DW	DW
A	A	3/23/17	UMI6283	DW	DW
A	B	07/20/22	UMI8086	ND	DW



PCB VIEW



RECOMMENDED PCB LAYOUT



- 5 LEAD LOCATION NUMBERS ARE REF. ONLY AND DO NOT APPEAR ON ACTUAL PART.
- 4. PERFORMANCE SPECIFICATIONS:
 CURRENT RATING: 3 AMPS MAX. AT AMBIENT TEMPERATURE
 INSULATION RESISTANCE: 5000 MEGOHMS MIN.
 DWV: 600 VAC
 TEMPERATURE RATING: 200° C

- 3 MATERIALS:
 SHELL: 6061-T6 ALUMINUM PER AMS-QQ-A200/8, CADMIUM PLATED PER AMS-QQ-P-416
 INSULATOR & BACKSHELL: PPS PER MIL-M-24519 GST-40F, COLOR: BLACK
 PIN CONTACTS: C17410 BERYLLIUM COPPER PER ASTM B768, GOLD PLATED PER ASTM B488
 24 AWG LEADS: GOLD PLATED COPPER ALLOY, (.000010 MIN. THK.)
 HARDWARE: PASSIVATED STAINLESS STEEL IAW MIL-DTL-83513/5

- 2 MARKING: "UMI", DATE CODE, UMI PART NUMBER, AND WORK ORDER NUMBER

1. CONNECTOR ASSEMBLY IS IAW MIL-DTL-83513 UNLESS OTHERWISE SPECIFIED.

NOTES: UNLESS OTHERWISE SPECIFIED.

QUALITY SYMBOLS CRITICAL MAJOR NO SYMBOLS = MINOR DIMENSIONS	UNLESS OTHERWISE SPECIFIED: ALL DIMENSIONS ARE IN INCHES	SCALE: NONE	DWG SIZE: B	THIRD ANGLE PROJECTION	REVISE ON CAD ONLY	
	GENERAL TOLERANCES: 3 PLACES ±.005 2 PLACES ±.01 ANGULAR ±2°	DRAWN BY & DATE: DU 5/20/14		TITLE: MICRO-D CIRCUIT CONNECTOR, CM1R15P07-24C4-HT, CADMIUM PLATED SHELL, HIGH TEMP		
	ULTI-MATE CAGE CODE: 58967	CHECKED BY & DATE: DW 5/20/14		MATERIAL: 3	ENG PROJECT #: NONE	
		APPROVED BY & DATE: DW 5/20/14		PART NO.: 436120117	DRAWING NO.: SD-436120117	
		CAD FILE NAME: SD-436120117.SLDDRW		THIS DRAWING CONTAINS INFORMATION THAT IS PROPRIETARY TO ULTI-MATE INCORPORATED AND SHOULD NOT BE USED WITHOUT WRITTEN PERMISSION.		
					PART REV.: A	