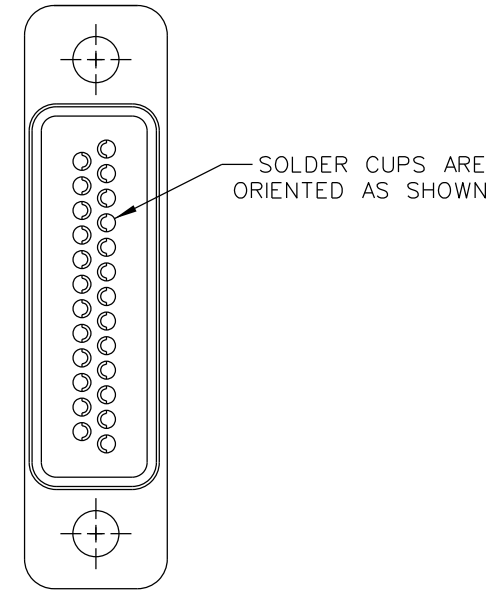
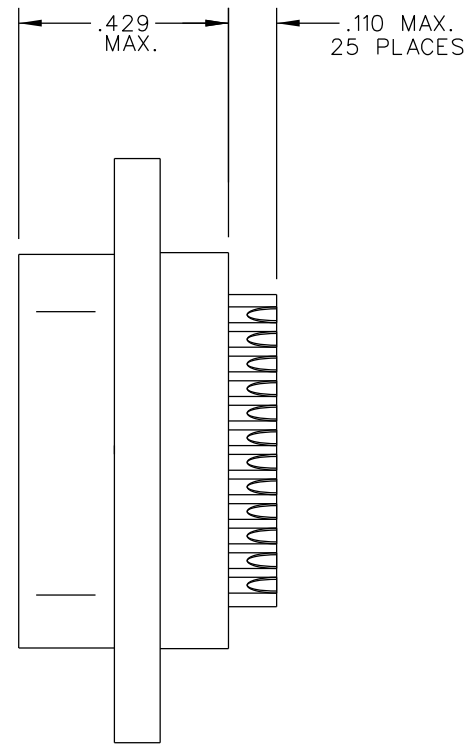
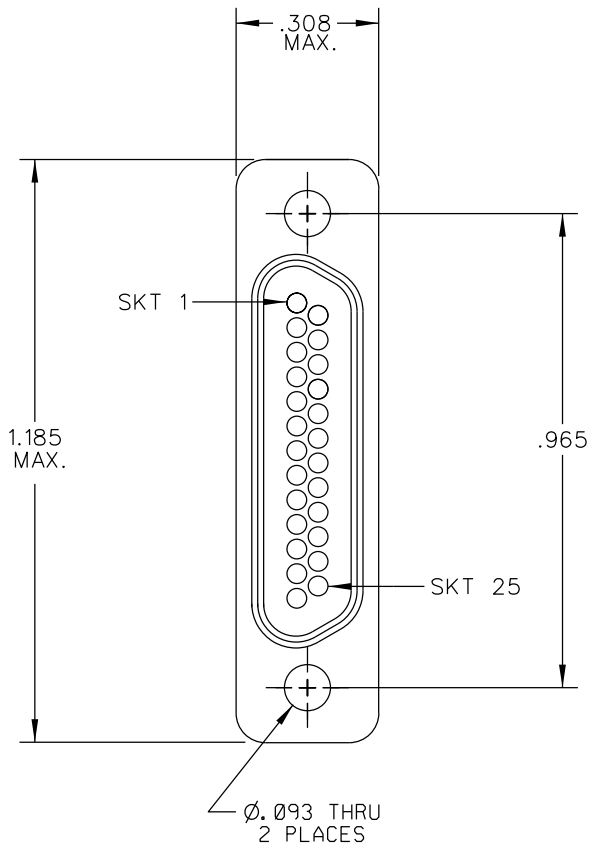


SD-434240000

PART REV	DWG ISSUE	DATE	ECN NO.	APPVD BY	REL BY
-	-	2-13-14	UMI 5240	DW	DW



PART NO.	ENG. NO.	SHELL PLATING
434240000	MR25T0-HT	CADMIUM PLATED PER SAE-AMS-QQ-P-416
434241000	MR25T0-S01-HT	ELECTROLESS NICKEL PLATED PER AMS 2404

3. PERFORMANCE SPECIFICATIONS:
 CURRENT RATING: 3 AMPS MAX AT AMBIENT TEMPERATURE
 INSULATION RESISTANCE: 5000 MEGOHMS MIN.
 DWV: 600 VAC;
 TEMPERATURE RATING: 200°C

2 MATERIALS:
 SHELL: 6061-T6 ALUMINUM PER SAE-AMS-QQ-A200/8, SEE CHART FOR PLATING
 INSULATOR: PPS PER MIL-M-24519 GST-40F, COLOR: BLACK
 SOCKET CONTACT: C21000 COPPER ALLOY PER ASTM B36,
 GOLD PLATED PER ASTM B488
 INTERFACIAL SEAL: FLUOROSILICONE PER MIL-R-25988

1. MARKING: UMI, DATE CODE, UMI P/N.
 NOTES: UNLESS OTHERWISE SPECIFIED.

QUALITY SYMBOLS	UNLESS SPECIFIED: ALL DIMENSIONS IN INCHES	SCALE 4 : 1	DWG SIZE B	THIRD ANGLE PROJECTION	REVISE ON CAD ONLY
CRITICAL	GENERAL TOLERANCES: 3 PLACE ±.005 2 PLACE ±.01 ANGULAR ±2°	DRAWN BY & DATE DW 2-13-14	CHECKED BY & DATE SEE ECN	TITLE: MICRO-D RECEPTACLE, SOLDER CUP, SOCKET CONTACTS, MR25T0-HT/MR25T0-S01-HT	
SPL/MI NOR	ALL EXTERNAL SPECIFICATIONS REFERENCED ON THIS DRAWING SHALL BE TO THE LATEST REVISION IN EFFECT	APPROVED BY & DATE SEE ECN	MATERIAL: 2	Uti-Mate Connector Inc.	
SPL/MAJOR		CAD FILENAME SD-434240000.DGN	PART NO. SEE CHART	DRAWING NO. SD-434240000	SHEET NO. 1 OF 1
KEY	Uti-Mate CAGE CODE 58967	THIS DRAWING CONTAINS INFORMATION THAT IS PROPRIETARY TO ULTI-MATE INCORPORATED AND SHOULD NOT BE USED WITHOUT WRITTEN PERMISSION.			PART REV -