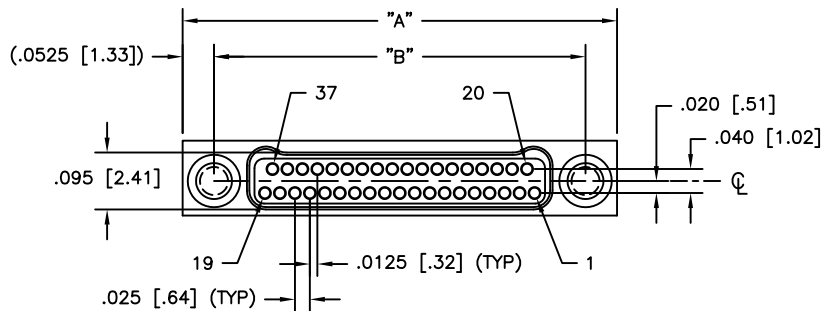
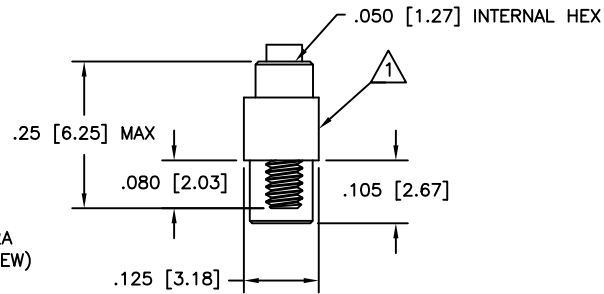
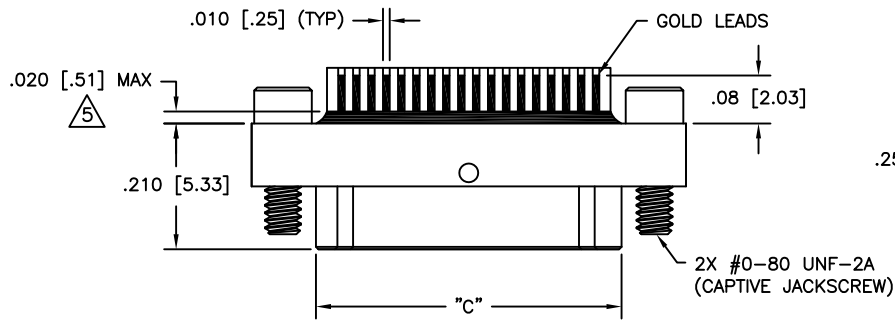


| | | | | | |
|----------|-----------|----------|---------|-----------|--------|
| 3 | | | 2 | | |
| PART REV | DWG ISSUE | DATE | ECN NO. | APPVD BY | REL BY |
| - | - | 07/18/19 | UMI7214 | T.POMBART | PER |
| A | A | 07/26/22 | UMI8091 | CB | DW |



| PART NO. | SIZE | "A" | "B" | "C" |
|-----------|------|---------------|--------------|--------------|
| 433311052 | 9 | .375 [9.52] | .270 [6.86] | .160 [4.06] |
| 433321052 | 15 | .450 [11.43] | .345 [8.76] | .235 [5.97] |
| 433331052 | 21 | .525 [13.33] | .420 [10.67] | .310 [7.87] |
| 433341052 | 25 | .575 [14.60] | .470 [11.94] | .360 [9.14] |
| 433351052 | 31 | .650 [16.51] | .545 [13.84] | .435 [11.05] |
| 433361052 | 37 | .725 [18.41] | .620 [15.75] | .510 [12.95] |
| 433371052 | 51 | .900 [22.86] | .795 [20.19] | .685 [17.40] |
| 433381052 | 65 | 1.075 [27.30] | .970 [24.64] | .860 [21.84] |

△ A LINE OF EPOXY TO BE ADDED, AS SHOWN, ON BOTH SIDES

4. PERFORMANCE: MANUFACTURED TO THE FOLLOWING M32139 PERFORMANCE SPECIFICATIONS
 CONTACT RATING: 1 AMPERE MAXIMUM AT AMBIENT TEMPERATURE
 DWV: 250 VAC
 INSULATION RESISTANCE: 5000 MEGOHMS MINIMUM @ 100 VDC
 CONTACT RESISTANCE: 0.021 VOLT MAXIMUM DROP @ 1.0 AMPS (.021 OHMS)

3. INTERMATEABILITY: INTERFACE DIMENSIONS PER MIL-DTL-32139

△ MATERIALS: SHELL: ALUMINUM 6061-T6, ELECTROLESS NICKEL PLATED PER AMS2404
 INSULATOR: LCP (LIQUID CRYSTAL POLYMER) GLCP-30F
 CONTACT: BERYLLIUM COPPER PER ASTM B194, GOLD PLATED PER ASTM B488
 LEADS: GOLD LEADS (ROHS COMPLIANT)
 HARDWARE: 303 STAINLESS PER ASTM 582
 EPOXY: 200° CELSIUS

△ MARKINGS: UMI, UMI P/N, DATE CODE & W/O NO. AS SPACE PERMITS OTHERWISE ON BAG OR TAG

NOTES: UNLESS OTHERWISE SPECIFIED

| | | | | | |
|--|--|----------------------------------|--|-----------------------------|--------------------------------------|
| QUALITY SYMBOLS MAJOR = ▽ CRITICAL = ▽ SPC = ▽ | UNLESS SPECIFIED: ALL DIMENSIONS IN INCHES | SCALE: 5:1 | DWG SIZE: B | THIRD ANGLE PROJECTION | REVISE ON CAD ONLY |
| | GENERAL TOLERANCES: 3 PLACE ±.005 2 PLACE ±.010 ANGULAR ±2° | DRAWN BY & DATE PER 07-18-19 | TITLE: NANO-D DUAL ROW CONNECTOR MALE, SIZE XX, NMLXX-2N022-S01 HT | | |
| | Ultri-Mate CAGE CODE 58967 | CHECKED BY & DATE SEE ECN | APPROVED BY & DATE SEE ECN | MATERIAL: △ | Ultri-Mate Connector Inc. |
| | | CAD FILENAME SD-433361052.DWG | PART NO. SEE "TAB BLOCK" | DRAWING NO. SD-433361052 | SHEET NO. 1 OF 1 PART REV A |

THIS DRAWING CONTAINS INFORMATION THAT IS PROPRIETARY TO ULTI-MATE INCORPORATED AND SHOULD NOT BE USED WITHOUT WRITTEN PERMISSION.