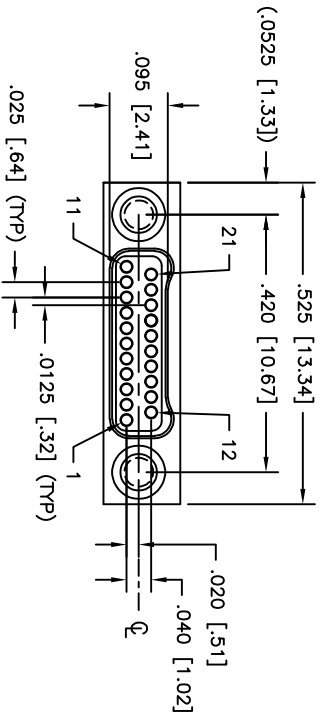
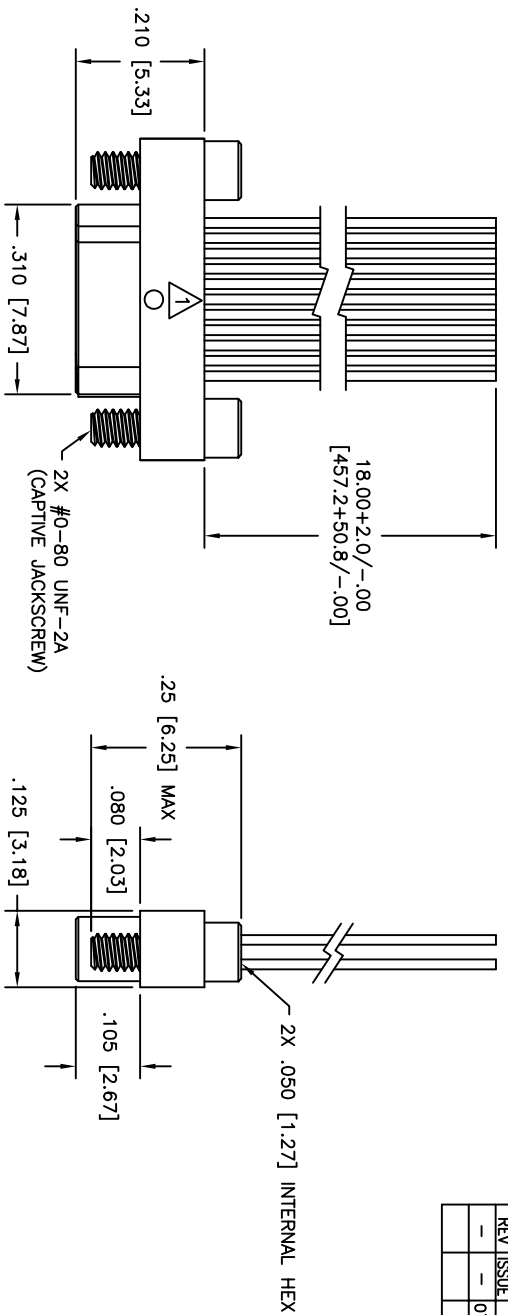


PART DWG	DATE	ECN NO.	APPVD BY	REL BY
REV ISSUE				
-	07/07/22	UM8062	T.FOWBART	PER

WIRING COLOR CODE

- 1, 11, 21 — BLACK
- 2, 12 — BROWN
- 3, 13 — RED
- 4, 14 — ORANGE
- 5, 15 — YELLOW
- 6, 16 — GREEN
- 7, 17 — BLUE
- 8, 18 — VIOLET
- 9, 19 — GRAY
- 10, 20 — WHITE



3. PERFORMANCE: MEETS OR EXCEEDS M32139 PERFORMANCE SPECIFICATIONS

CONTRACT RATING: 1 AMPERE MAXIMUM  
 DWV: 250 VAC  
 INSULATION RESISTANCE: 5000 MEGOHMS MINIMUM @ 100 VDC  
 CONTACT RESISTANCE: 0.071 VOLT MAXIMUM DROP @ 1.0 AMPS (.071 OHMS)  
 W/6.00" OF WIRE LISTED BELOW, PER MIL-DTL-52139

2. MATERIALS: SHELL: ALUMINUM 6061-T6, ELECTROLESS NICKEL PLATED PER AMS2404  
 INSULATOR: LCP (LIQUID CRYSTAL POLYMER) GICP-30F  
 CONTACT: BERYLLIUM COPPER PER ASTM B194, GOLD PLATED PER ASTM B488  
 LEADS: 30 AWG, SAE-AS22759/33, COLOR CODED PER MIL-DTL-681, SYSTEM 1,  
 EXCEPT USING 10 SOLID REPEATING COLORS  
 HARDWARE: 303 STAINLESS PER ASTM 582

1. MARKINGS: J M32139/03-C11SN (.035 MIN FONT HEIGHT) ON SPRUE HOLE SIDE, IN ONE LINE BELOW  
 SPRUE HOLE. OPPOSITE SIDE MARKING: UMI AND DATE CODE, ON ONE HALF OF FLANGE. LEAVE  
 THE OTHER HALF FREE OF MARKING FOR ANY SUBSEQUENT MARKING  
 NOTES: UNLESS OTHERWISE SPECIFIED

QUALITY SYMBOLS	UNLESS SPECIFIED, ALL DIMENSIONS IN INCHES	SCALE	DWG SIZE	THIRD ANGLE PROJECTION	REVISE ON CAD ONLY
MAJOR =	GENERAL TOLERANCES:	5:1	B		
CRITICAL =	3 PLACE ±.005	DRAWN BY & DATE			
SPC =	2 PLACE ±.010	CHECKED BY & DATE			
	ANGULAR ±.2°	APPROVED BY & DATE			
		CAD FILENAME	PART NO.		
		Uti-Mate CAGE CODE	321331222	DRAWING NO.	SD-321331222
		58967		CONNECTOR, INC	1 OF 1
					PART REV

THIS DRAWING CONTAINS INFORMATION THAT IS PROPRIETARY TO UTI-MATE INCORPORATED AND SHOULD NOT BE USED WITHOUT WRITTEN PERMISSION.