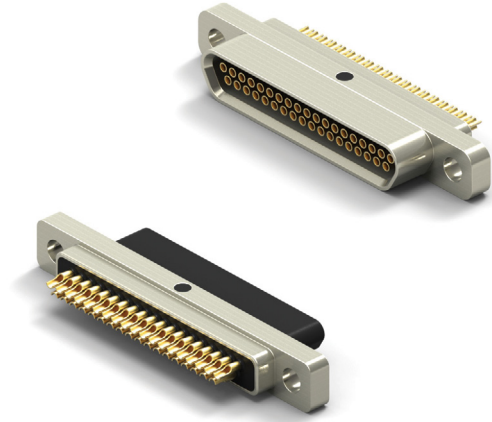


# FIELD SOLDERABLE CONNECTOR

- Low Profile Metal Shell Connector w/Solder Cup Contacts
- Environmentally Sealed
- Operating Temperature -50° C to 200° C
- 9 to 51 Contacts Accepting 24 AWG Wire

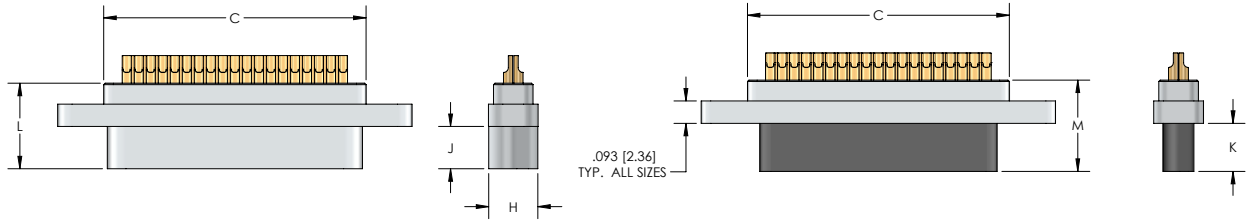


## HOW TO ORDER

\* Indicates preferred standard, \*\* Consult factory for other plating options, \*\*\* Leave blank if no Mounting Option is required

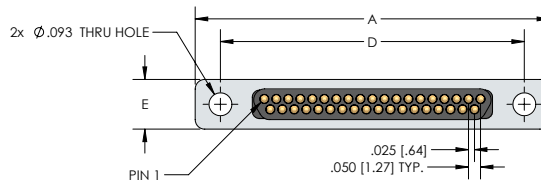
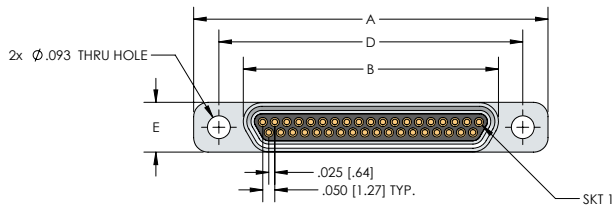
Series	Insulator	51-3	N	Ø	- SØ1	Temp Range	Mounting Option***
A = Metal Shell (Receptacle)	R=PPS	Ø9	N= Male / Pin (Plug Side)	Ø No Hardware	Blank= Cadmium	*Blank =125C	F01-Float Mount
		15				HT = 200C	
AP = Metal Shell w/Plastic shroud (Plug)		21	T = Female/Socket (Receptacle Side)	*Ø2 (22 Swaged)	*SØ1 = Nickel		
		25					
		31	TT = Female/Socket (Receptacle Side) for 24 AWG wire	Ø3	SØ3 = Black Anodize		
		37					
				*Ø5	SØ6 = Olive-Drab Cadmium		
	51-3						
				Ø6	SØ7 =Titanium		
			Ø7	SØ9 =Stainless			

# DIMENSIONS



RECEPTACLE (SOCKETS)

PLUG (PINS)



Size	ALL		A & AP SERIES							
	A Max.	B Max.	C Max.	D Max.	E Max.	H Max.	J Max. (Skt)	K Max. (Pin)	L Max. (Skt)	M Max. (Pin)
9	.785 (19.94)	.376 (9.55)	.393 (9.98)	.565 (14.35)	.218 (5.54)	.218 (5.54)	.182 (4.62)	.209 (5.31)	.375 (9.57)	.395 (10.03)
15	.935 (23.75)	.526 (13.36)	.543 (13.79)	.715 (18.16)	.218 (5.54)	.218 (5.54)	.182 (4.62)	.209 (5.31)	.375 (9.57)	.395 (10.03)
21	1.085 (27.56)	.693 (17.17)	.693 (17.60)	.865 (21.97)	.218 (5.54)	.218 (5.54)	.182 (4.62)	.209 (5.31)	.375 (9.57)	.395 (10.03)
25	1.185 (30.10)	.776 (19.71)	.793 (20.14)	.965 (24.51)	.218 (5.54)	.218 (5.54)	.182 (4.62)	.209 (5.31)	.375 (9.57)	.395 (10.03)
31	1.335 (33.91)	.926 (23.52)	.943 (23.95)	1.115 (28.32)	.218 (5.54)	.218 (5.54)	.182 (4.62)	.209 (5.31)	.375 (9.57)	.395 (10.03)
37	1.485 (37.72)	1.076 (27.33)	1.093 (27.76)	1.265 (32.13)	.218 (5.54)	.218 (5.54)	.182 (4.62)	.209 (5.31)	.375 (9.57)	.395 (10.03)
51-3	1.435 (36.45)	1.026 (26.06)	1.041 (26.44)	1.215 (30.86)	.254 (6.45)	.254 (6.45)	.182 (4.62)	.209 (5.31)	.375 (9.57)	.395 (10.03)

# MICRO-D SOLDERABLE SERIES METAL PERFORMANCE DATA, MATERIALS AND FINISHES

## PERFORMANCE DATA

18-E	ELECTRICAL
CONTACT RESISTANCE:	8 mΩ max.@ 2.5 A
CURRENT RATING (SIGNAL CONTACTS):	3 A max.
DIELECTRIC WITHSTANDING VOLTAGE:	600 VAC at sea level, 150 VAC at 70,000 ft.
INSULATION RESISTANCE:	5,000 MΩ min.

10-M	MECHANICAL
CONTACT ENGAGING FORCE:	6 oz max. (Contact average is 3 oz.)
CONTACT SEPARATING FORCE:	0.5 oz. min.
CONNECTOR MATING FORCE:	10 oz. x number of contacts max.
CONNECTOR UNMATING FORCE:	10 oz. x number of contacts min.
VIBRATION:	No damage or interruption detected (one microsecond sensitivity) EIA-364-28 Condition IV
SHOCK:	No damage or interruption detected (one microsecond sensitivity) EIA-364-27 Condition E
DURABILITY:	No mechanical or electrical defects after 500 matings.
SALT SPRAY:	No exposure of base metal or loss of performance after 96 hours for both Nickel and Cadmium plating

## MATERIALS AND FINISHES

18-M&F	MATERIALS AND FINISHES
Pin Contacts	Beryllium Copper (C17200) per ASTM B194.
Socket Contacts	Leaded commercial bronze (C314000) per ASTM B140.
Contact Plating	Gold plated per ASTM-B488. 50 microinches min. is the standard thickness.
Metal Shells	Aluminum alloy per SAE-AMS-QQ-A-200/8, type 6061-T6. Finish is cadmium per SAE-AMS-QQ-P-416,TYPE II, CLASS 3, with suitable underplate with yellow chromate, this plating is not RoHS compliant. Or Finish Electroless Nickel plate per SAE AMS2404, class 3 or 4, .0005 minimum thickness.
Insulator Material	Polyphenylene sulfide (PPS) per MIL-M-24519 GST 40F or ASTM D5927. Color Black.
Interfacial Seals	Fluorosilicone elastomer per MIL-R-25988. Standard on "M" Series socket face.
Hardware	Corrosion resistant steel per ASTM A 582/A582 or ASTM A 581/A581M, Passivated per SAE AMS-2700