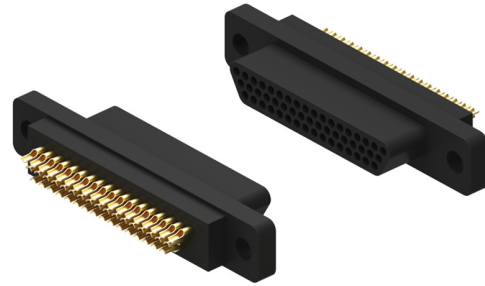




FIELD SOLDERABLE CONNECTOR

- Low Profile Plastic Shell Connector w/Solder Cup Contacts
- Environmentally Sealed
- Operating Temperature -50° C to 200° C
- 9 to 51 Contacts Accepting 24 AWG Wire



HOW TO ORDER

* Indicates preferred standard *** Leave blank if no hardware required.

P	R	51-3	N	Ø	-	HT
Series	Insulator	Contacts	Gender	Hardware ***		Temp Range
P = Plastic Shell	R = PPS	Ø9	N = Male / Pin (Plug Side)	*Ø2		*Blank = 125C
		15		Low Allen 		HT = 200C
		21	T = Female/Socket (Receptacle Side)	Ø3		UHT = 200C
		25		High Allen 		
		31	TT = Female/Socket (Receptacle Side) for 24 AWG wire	*Ø5		
		37		Low Slot 		
		51-3		Ø6		
				High Slot 		
				Ø7		
				Jack Post 		

PERFORMANCE DATA

ELECTRICAL	
CONTACT RESISTANCE:	8 mΩ max.@ 2.5 A
CURRENT RATING (SIGNAL CONTACTS):	3 A max.
DIELECTRIC WITHSTANDING VOLTAGE:	900 VAC at sea level, 300 VAC at 70,000 ft.
INSULATION RESISTANCE:	5,000 MΩ min.