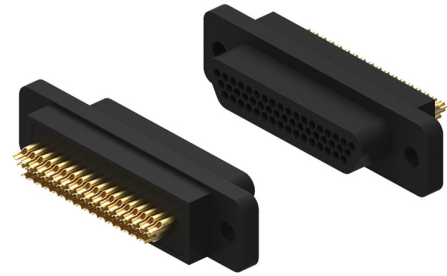









FIELD SOLDERABLE CONNECTOR

- Standard Profile Plastic Shell Connector w/Solder Cup Contacts
- Environmentally Sealed
- Operating Temperature -50° C to 200° C
- 9 to 100 Contacts Accepting 24 AWG Wire



HOW TO ORDER

* Indicates preferred standard *** Leave blank if no hardware required.

B	R	51-3	N	Ø	-	HT
Series	Insulator	Contacts	Gender	Hardware ***		Temp Range
B = Plastic Shell	R = PPS	Ø9	N = Male / Pin (Plug Side)	*Ø2 (12 for Size 100)		*Blank = 125C
		15		Low Allen 		HT = 200C
		21	T = Female /Socket (Receptacle Side)	Ø3 (13 for Size 100)		
		25		High Allen 		
		31	TT = Female/Socket (Receptacle Side) for 24 AWG wire	*Ø5 (15 for Size 100)		
		37		Low Slot 		
		51-3		Ø6 (16 for Size 100)		
		100		High Slot 		
				Ø7 (17 for Size 100)		
				Jack Post 		

PERFORMANCE DATA

ELECTRICAL	
CONTACT RESISTANCE:	8 mΩ max.@ 2.5 A
CURRENT RATING (SIGNAL CONTACTS):	3 A max.
DIELECTRIC WITHSTANDING VOLTAGE:	600 VAC at sea level, 150 VAC at 70,000 ft.
INSULATION RESISTANCE:	5,000 MΩ min.